

DETAILED SOIL SURVEY

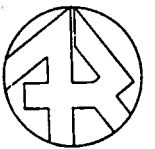
of

THE BLACK DIAMOND-TURNER VALLEY AREA

M. Scheelar

ALBERTA RESEARCH COUNCIL

Alberta
RESEARCH COUNCIL



LIST OF TABLES

	page
Table 1. Guides for Assessing Soil Limitations for Road Location	10
Table 2. Guides for Assessing Soil Limitations for Permanent Buildings	11
Table 3. Guides for Assessing Soil Limitations for Sewage Lagoons	12
Table 4. Guides for Assessing Soil Limitations for Camp Areas	13
Table 5. Guides for Assessing Soil Limitations for Picnic Areas	14
Table 6. Guides for Assessing Soil Limitations for Playing Fields	15
Table 7. Suitability Ratings of Soils as Sources of Gravel	16
Table 8. Suitability Ratings of Soils as Sources of Roadfill	16
Table 9. Suitability Ratings of Soils as Sources of Topsoil	17
Table 10. Engineering and Chemical Soil Data	37
Table 11. Limitations and Suitability of the Soils for Selected Uses	38
Table 12. Canadian Soil Classification System	43
Table 13. Definition of Soil Horizon Symbols	44

LIST OF FIGURES

Figure 1. Diagram of a Soil Profile	3
Figure 2. Guide for USDA Soil Textural Classification	6

SECTION I

PREFACE

This report is one of a series describing detailed soil surveys of areas found within the jurisdiction of the Calgary Regional Planning Commission. These soil surveys are conducted at sufficiently large scale to be useful for local planning.

The report contains information that can be used to evaluate soil properties for urban and recreational development, to evaluate the engineering properties of soils for construction materials and sites and to assess the agricultural capability of the land. The suitabilities or limitations of the soils for selected uses are described in tabular form in the report. These tables can easily be used to make interpretive maps for specific land uses.

There were seven areas surveyed in this program in 1974. These areas are adjacent to the following towns:

Strathmore (5,800 acres)

Okotoks (6,000 acres)

Airdrie (6,800 acres)

Black Diamond (7,700 acres)

Cochrane (10,000 acres)

High River (11,000 acres)

Canmore (15,000 acres)

Total acreage surveyed - 62,300.

There is a separate report for each area. A standard explanatory section which is pertinent to all areas is presented at the beginning of each report. Specific results and interpretations for a particular area are presented in the second section of the report.

INTRODUCTION

Soil is one of our most important natural resources. Man bases his activities on soils and depends on their productivity. Misuse of land can have drastic environmental, economic and social effects. Soil surveys provide baseline data on the soil resources of an area. This information is essential to land characterization and evaluation which is

(2)

the natural basis for effective land use and land management policies.

Soils vary widely in their properties and as such their suitability or limitations for different uses also varies. A soil with low agricultural capability may be suitable for road construction and a soil that is unsuitable for road location due perhaps to periodic flooding hazard or high water table may be excellent pasture land. However soils often are suitable for several uses. For example, well drained, level soils that have a high capability for agriculture also are excellent locations for airports, highways and urban development. Soil surveys provide the planner with information useful for making decisions based on predicted soil performance and soil suitability for multiple uses.

USE OF THE REPORT

This report consists of a written text and a map. The written part includes introductory and background information on soils, soil mapping, and soil interpretations in the first section and descriptions of the soils, analytical results, and interpretations for various uses in the second section.

The soil map is presented on an aerial photo-mosaic base. The photo base aids in identification and location of areas, however the linear and spatial distortion inherent in a photo mosaic must be appreciated. The soil-landscape units delineated on the map are described briefly in the map legend and in greater detail in the written report. The map and the report should be used together.

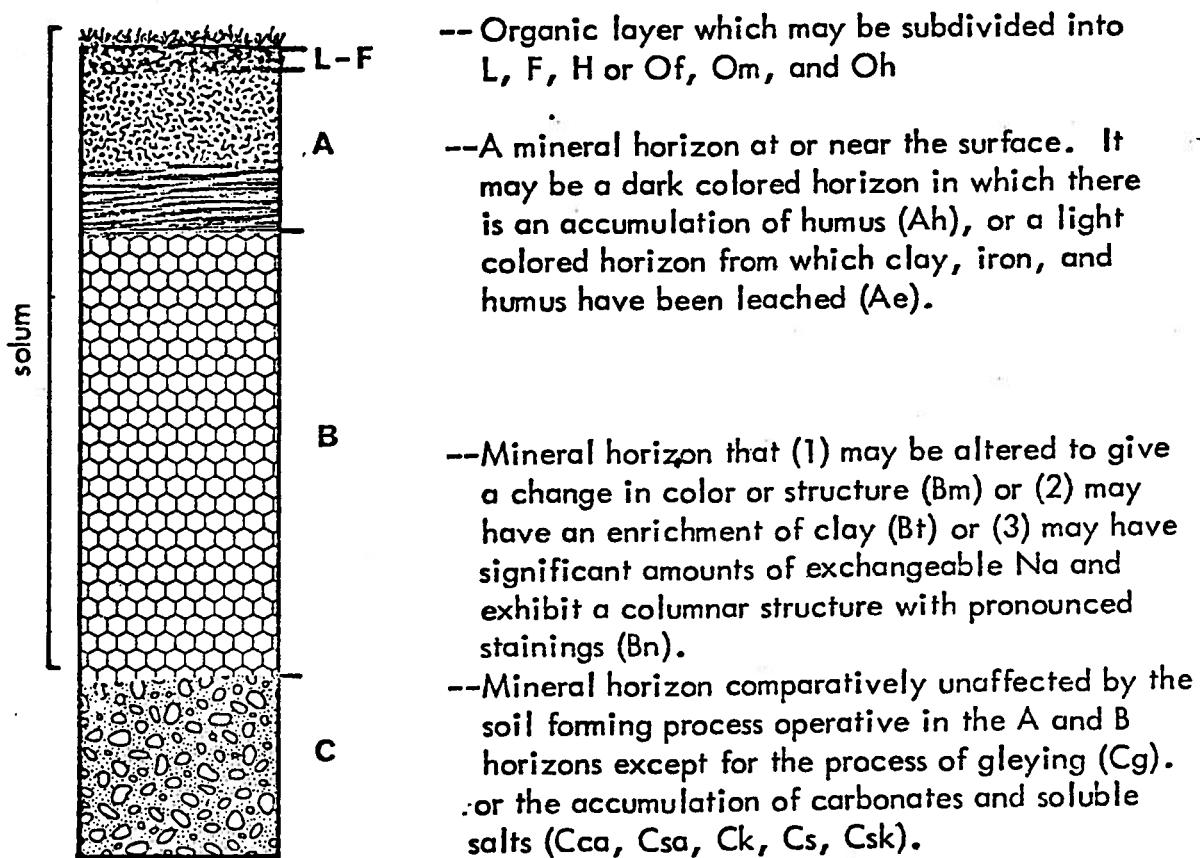
THE SOILS

Soil Formation

Soils are natural bodies present on the earth's surface that are an integral part of the environment. Soils display variation both vertically and horizontally and by examining these variations soil individuals may be recognized. Soils have evolved from their geological parent material through the action of a combination of

soil forming processes, which are controlled by environmental parameters or "soil forming factors". These soil forming factors are commonly listed as being the parent material, climate, biotic agents and topography all acting through time. The variations in relative importance or dominance of one or more of the soil forming processes such as addition and removal of organic matter, translocation of clays or iron and aluminum, and chemical and physical transformations result in the formation of horizons or layers of various kinds within the soil body. These horizons differ from one another in such properties as color, texture, structure, consistence, and chemical and biological activity. The major, or master horizons are designated O for organic layers developed mainly from mosses, rushes, and woody materials; L, F and H for organic layers developed mainly from leaves, twigs, woody materials, and a minor component of mosses; and A, B and C for mineral horizons. Subdivisions of the master horizons are denoted by suffix letters appended to the master horizon symbol (see Figure 1, Table 13, and glossary).

FIGURE 1. DIAGRAM OF A SOIL PROFILE



Through observation of soil characteristics it is possible to classify soils into taxonomic units. In this report the System of Soil Classification for Canada (Canada Soil Survey Committee, 1973) is used (see Soil Unit Descriptions). The criteria used for making the taxonomic separations are significant for understanding soil genesis and for land use applications.

Soil Mapping

When mapping soils the fieldman examines the soil at points in the landscape to characterize landscape units. Since soil is a continuum, and adjacent soils seldom have sharp boundaries, soil map units are defined as having a certain range of properties. These soil map units are based on geologic materials and landforms, soil development, and soil moisture conditions. The soil and land attributes recognized in mapping are important for various land uses.

The notations on the soil map consist of number and letters: for example

1 - 3
c

The first digit in the number represents a geologic landform or material (for example an alluvial fan or a glacial till); the second digit denotes soil profile development, moisture conditions, and sometimes textural differences; and the letter denotes the topographical class. The topographical classes are those used by the Canada Soil Survey Committee, which are as follows:

Simple topography Single slopes (regular surface)	Slope %	Complex topography Multiple slopes (irregular surface)	
A	0 to 0.5	a	nearly level
B	0.5+ to 2	b	gently undulating
C	2+ to 5	c	undulating
D	5+ to 9	d	gently rolling
E	9+ to 15	e	moderately rolling
F	15+ to 30	f	strongly rolling
G	30+ to 60	g	hilly
H	over 60	h	very hilly

The soils were mapped in the field by making observations at selected sites using available exposures or digging with a shovel or coring with a truck-mounted coring machine. These point observations are extrapolated to an area basis through the use of aerial photograph interpretation and field checking. The principal soils were sampled to depths of six feet for physical, chemical and engineering analyses.

Soil Classification

The soils have been classified according to the System of Soil Classification for Canada (Canada Soil Survey Committee, 1973). This scheme classifies the soils in their natural state and thus indicates relationships between soils and their environment.

These relationships are often important for assessing limitations of soils for various uses. The classification system is described briefly in Table 12.

Soil Texture

Throughout the report reference is made to soil texture and to soil drainage classes. Soil texture is according to the United States Department of Agriculture (USDA) textural classification which is described below. The soil drainage classes, according to the Canada Soil Survey Committee (1970) are outlined following the textural classification.

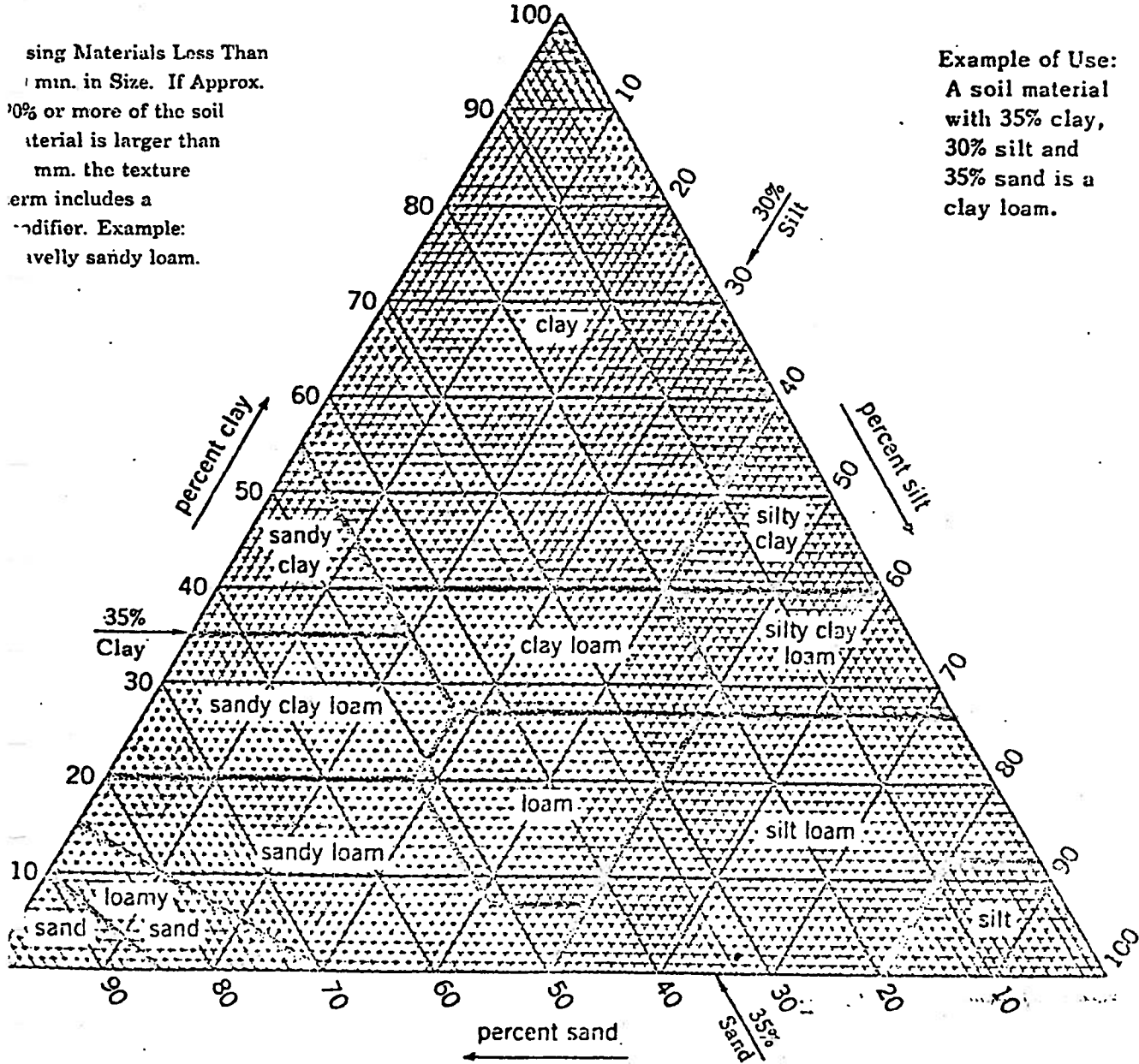
Soil Separates (Particle Size) on which Textural Classes are Based.

<u>Separates</u>		<u>Diameter in Millimeters</u>
Very Coarse Sand (V.C.S.)		2.0 - 1.0
Coarse Sand (C.S.)		1.0 - 0.5
Medium Sand (M.S.)	Sand (S)	0.5 - 0.25
Fine Sand (F.S.)		0.25 - 0.10
Very Fine Sand (V.F.S.)		0.10-0.05
Silt (Si)		0.05 - 0.002
Clay (C)		less than 0.002

FIGURE 2. GUIDE FOR USDA SOIL TEXTURAL CLASSIFICATION.

...sing Materials Less Than
...mm. in Size. If Approx.
...0% or more of the soil
...aterial is larger than
...mm. the texture
...erm includes a
...ndifier. Example:
...velly sandy loam.

Example of Use:
A soil material
with 35% clay,
30% silt and
35% sand is a
clay loam.



The soil textural classes are grouped according to the Canada Soil Survey Committee as follows:

- Very coarse textured: sands, loamy sands.
- Moderately coarse textured: sandy loam, fine sandy loam.
- Medium textured: very fine sandy loam, loam, silt loam, silt.
- Moderately fine textured: sandy clay loam, clay loam, silty clay loam.
- Fine textured: sandy clay, silty clay, clay (40 - 60% clay).
- Very fine textured: heavy clay (more than 60% clay).

The gravelly class names are added to the textural class names according to the following rule:

% gravel by volume

less than 20	- use textural class only.
20 - 50	- gravelly and texture.
50 - 90	- very gravelly and texture.
more than 90 in surface 8 inches	- cobble land type

Soil Drainage Classes

Soil drainage classes are defined in terms of (a) actual moisture content in excess of field moisture capacity, and (b) the extent of the period during which such excess water is present in the plant root zone.

Rapidly drained - soil moisture content seldom exceeds field capacity in any horizon except immediately after water additions.

Well drained - soil moisture content does not normally exceed field capacity in any horizon except possibly the C, for a significant part of the year.

Moderately well drained - soil moisture in excess of field capacity remains for a small but significant period of the year.

Imperfectly drained - soil moisture in excess of field capacity remains in subsurface horizons for moderately long periods during the year.

Poorly drained - soil moisture in excess of field capacity remains in all horizons for a large part of the year.

Very poorly drained - free water remains at or within 12 inches of the surface most of the year.

Specific reference to surface drainage may be designated in terms of run-off and described as high, medium, low or ponded. Similarly, specific reference to the characteristics of horizons within the profile may be designated in terms of permeability or percolation and described as rapid, moderate, slow, very slow, and none.

SOIL AND LAND USE

Engineering Use of Pedological Information

Both the report and the map contain information of use to engineers and land use planners. A pedological soil classification, which describes the soil in its natural setting, describes not only the soil material but also the effects of soil climate, drainage, permeability and topography. When planning the construction of roads, airports, residential and other developments which are based on the soil this information can be very useful in predicting performance. Highway engineers make use of soil maps in planning materials investigations and for predicting sub-grade and pavement performance (Allemeier, 1973). A recent soil survey in the Mill Woods area of Edmonton indicated areas where concrete corrosion due to sulfate attack was a potential problem (Lindsay, et al, 1973).

Several terms, such as soil, texture, structure, and consistence differ in usage between pedology and engineering. The pedological meanings are intended in this report and many of the terms are defined in the glossary.

Engineering Properties of the Soils

Engineering properties including particle size distribution, Atterberg limits, and the Unified and AASHO classification are reported for the major soils. These data are derived from laboratory testing of samples representative of the soil map unit. The philosophy of pedology is involved here in extrapolating from a site to an area. These data are not intended to be site specific and do not substitute for on-site inspection and soil testing but do provide a basis for area planning and further soil investigations.

Soils and Urban Development

In selecting sites for housing, schools, parks, shopping centres, sewage disposal and other community developments, soil suitability must be considered so as to avoid costly errors and to prevent waste, abuse and loss of valuable agricultural soils.

The soils have been evaluated for limitations to roads, buildings, and sewage lagoons and as suitability as a source of gravel, roadfill and topsoil. The soils have also been assigned ARDA capability ratings for agriculture in order to evaluate the loss of agricultural production potential.

These evaluations consider such soil properties as texture - which affects stability and bearing strength for roads and foundations, shrink-swell, risk of frost heaving, and rate of infiltration and internal drainage; soil moisture conditions - which affect location of buildings, roads, services and sewage disposal; topography - which affects drainage and site location; and flooding hazard - which affects location of buildings, roads and sewage lagoons.

Soil interpretations are included so that soils information may be more easily understood. These interpretations should be treated as evaluations of performance of soils not as recommendations for the use of soils. Many other factors are involved in the recommended use of soils. Also, because soil boundaries are not precise, soil survey interpretations do not eliminate on-site investigations. They are, however, intended as an aid in planning further investigations, to reduce the amount of investigation and minimize the cost.

For each use, the soils are rated in terms of degree of limitation - slight, moderate or severe, or in terms of suitability as a source of material - good, fair or poor.

A slight soil limitation is the rating given soils that have properties favourable for the use. Good performance and low maintenance can be expected.

A moderate soil limitation is the rating given soils that have properties moderately favourable for the use. This limitation can be overcome or modified by planning, design or maintenance.

A severe soil limitation is the rating given soils that have one or more properties that are seriously unfavourable for the use. This limitation generally requires major soil reclamation, special design or intensive maintenance. In most situations, it is difficult and costly to alter the soil or to design a structure so as to compensate for the severe degree of limitation but using these soils without employing corrective measures could result in failure.

TABLE 1. GUIDES FOR ASSESSING SOIL LIMITATIONS FOR ROAD LOCATION

Properties that affect design and construction of roads are (1) those that affect the load supporting capacity and stability of the subgrade; and (2) those that affect the workability and amount of cut and fill. The AASHTO and Unified Classification, and the shrink-swell potential give an indication of the traffic supporting capacity. Wetness and flooding affect stability. Slope, depth of bedrock, stoniness, rockiness, and wetness affect the ease of excavation and the amount of cut and fill to reach an even grade.

Soil limitation ratings do not substitute for basic soil data or for onsite investigations.

Item Affecting Use	Degree of Soil Limitation		
	NONE TO SLIGHT	MODERATE	SEVERE
Soil drainage class ¹	Rapidly ¹ , well and moderately well drained.	Imperfectly drained	Poorly and very poorly drained.
Flooding	None	Once in 5 years	More than once in 5 yrs.
Slope	0 to 9% (AD).	9 to 15% (E).	More than 15% (>E).
Depth to Bedrock	More than 40 inches	20 to 40 inches.	Less than 20 inches.
Subgrade ²			
a. AASHTO Group index ³	0 to 4.	5 to 8.	more than 8
b. Unified soil classes	GW, GP, SW, GM, SM, and GC ⁴ and SC ⁴ .	CL (with PI ⁵ less than 15), ML, SP.	CL (with PI ⁵ 15 or more), CH, MH, OH, OL, Pt.
Shrink-swell ⁶ potential	Low (PI ⁵ less than 15).	Moderate (PI ⁵ 10 to 15).	High (PI ⁵ greater than 20).
Susceptibility to frost heave ⁷	Low (F1, F2).	Moderate (F3).	High (F4) (silty & peaty soils).
Stoniness	Stones greater than 5' apart.	Stones 2 to 5' apart.	Stones less than 2' apart.
Consolidated Bedrock exposures	Rock exposures greater than 300' apart and cover less than 2% of the surface	Rock exposures 300 to 100' apart and cover 2 to 10% of the surface.	Rock exposures less than 100' apart and cover greater than 10% surface.

1. For an explanation of soil drainage classes see page 7.
2. This item estimates the strength of a soil as it applies to roadbeds. When available, AASHTO Group Index values from laboratory tests were used; otherwise the estimated Unified classes were used. On unsurfaced roads, rapidly drained, very sandy poorly graded soils may cause washboard or rough roads.
3. Group Index values were estimated from information published by the Portland Cement Assn. 1962. pp 23-25.
4. Downgrade to moderate if content of fines (less than 200 mesh) is greater than about 30%.
5. PI means plasticity index.
6. Inherent swelling capacity is estimated as low when the plasticity index is less than 15, medium when the plasticity index is 10 to 15 and high when the plasticity index is greater than 20 (Terzaghi and Peck, 1967). Gravelly and stony soils may not exhibit shrink-swell as estimated by the plasticity index because of dilution of the fines with coarse fragments. In these situations decrease a severe limitation to moderate and a moderate limitation to slight.
7. Frost heave is important where frost penetrates below the hardened surface layer and moisture transportable by capillary movement is sufficient to form ice lenses at the freezing front. The susceptibility classes are taken from the United States Army Corps of Engineers (1962), pp.5 - 8.

TABLE 2. GUIDES FOR ASSESSING SOIL LIMITATIONS FOR PERMANENT BUILDINGS¹

This guide provides ratings for undisturbed soils evaluated for single storey buildings and other structures with similar foundation requirements. The emphasis for rating soils for buildings is on foundations; but soil slope, and susceptibility to flooding and other hydrologic conditions, such as seasonal wetness, that have effects beyond those related exclusively to foundations are considered. Also considered are soil properties, particularly depth to bedrock, which influence excavation and construction costs, both for the building itself and for the installation of utility lines. Excluded are limitations for soil corrosivity, landscaping and septic tank absorption fields. On site investigations are needed for specific placement of buildings and utility lines, and for detailed design of foundations. All ratings are for undisturbed soils based on information gained from observations to a depth of 4 to 6 feet.

Item Affecting Use	Degree of Limitation		
	SLIGHT	MODERATE	SEVERE ²
Wetness ³	<p><u>With basements:</u> Rapidly drained and well drained.</p> <p><u>Without basements:</u> Rapidly, well and moderately well drained.</p>	<p><u>With basements:</u> Moderately well drained.</p> <p><u>Without basements:</u> Imperfectly drained.</p>	<p><u>With basements:</u> Imperfectly, poorly & very poorly drained.</p> <p><u>Without basements:</u> Poorly & very poorly drained.</p>
Depth to seasonal water table (seasonal means 1 month or more)	<p><u>With basements:</u> Below 60 inches</p> <p><u>Without basements:</u> Below 30 inches</p>	<p><u>With basements:</u> Below 30 inches</p> <p><u>Without basements:</u> Below 30 inches</p>	<p><u>With basements:</u> Above 30 inches</p> <p><u>Without basements:</u> Above 20 inches</p>
Flooding	None	None	Subject to flooding
Slope ⁴	0 to 9% (AD).	9 to 15% (E).	More than 15% (>E).
Shrink-swell Potential	Low	Moderate	High
Unified soil group ⁵	GW, GP, SW, SP, GM, GC, SM, SC	ML, CL	CH, MH, OL, OH, Pt.
Potential frost action ⁶	Low (F1, F2).	Moderate (F3).	High (F4).
Stoniness	Stones greater than 25' apart	Stones 5 to 25' apart	Stones less than 5' apart.
Potential Concrete Corrosion	0.00 to 0.10% sulphate	0.10 - 0.50% sulphate	greater than 0.50% sulphate
Depth to Bedrock	<p><u>With basements:</u> More than 60 inches.</p> <p><u>Without basements:</u> More than 40 inches.</p>	<p><u>With basements:</u> 40 to 60 inches.</p> <p><u>Without basements:</u> 20 to 40 inches.</p>	<p><u>With basements:</u> Less than 40 inches.</p> <p><u>Without basements:</u> Less than 20 inches.</p>

1. By reducing the slope limits by $\frac{1}{2}$, this table can be used for evaluating soil limitations for buildings with large floor areas but with foundation requirements not exceeding those of ordinary 3-storey dwellings.
2. Some soils rated as having moderate or severe limitations may be good sites from an aesthetic or use standpoint but require more preparation or maintenance.
3. For an explanation of soil drainage classes see page 7.
4. Reduce slope limits by $\frac{1}{2}$ for those soils subject to hillside slippage.
5. This item estimates the strength of the soil, that is its ability to withstand applied loads.
6. The potential frost action classes are taken from the United States Army Corps of Engineers

TABLE 3. GUIDES FOR ASSESSING SOIL LIMITATIONS FOR SEWAGE LAGOONS.

A sewage lagoon (aerobic) is a shallow lake used to hold sewage for the time required for bacterial decomposition. Soils have two functions, (1) as an impounding vessel and (2) as material for the impounding embankment. When the lagoon is properly constructed it must be capable of holding water with minimum seepage.

Item Affecting Use	Degree of Soil Limitation		
	SLIGHT	MODERATE	SEVERE
Depth to water table ¹ (seasonal or year round)	more than 60 in.	40 - 60 in.	less than 40 in.
Flooding ²	none	none	soils subject to flooding
Depth to Consolidated Bedrock	more than 60 in.	40 - 60 in.	less than 40 in.
Slope	less than 2%	2 - 9%	more than 9%
Organic Matter	less than 2%	2 - 15%	more than 15%
Unified Soil Group ³	GC, SC, CL, CH	GM, ML, SM, MH	GP, GW, SW, SP, OL, OH, Pt.

1. If the floor of the lagoon is nearly impermeable material at least 2 feet thick, disregard depth to watertable.
2. Disregard flooding if it is not likely to enter or damage the lagoon (low velocity and depth less than five feet).
3. Rated mainly for the floor of the lagoon.

TABLE 4. GUIDES FOR ASSESSING SOIL LIMITATIONS FOR CAMP AREAS.

This guide applies to soils to be used intensively for trailers and tents and the accompanying activities of outdoor living. It is assumed that little site preparation will be done other than shaping and levelling for campsites and parking areas. The soil should be suitable for heavy foot traffic and for limited vehicular traffic¹. Soil suitability for growing and maintaining vegetation is not a part of this guide, except as influenced by moisture, but is an important item to consider in the final evaluation of site.

Item Affecting Use	Degree of Soil Limitation		
	NONE TO SLIGHT	MODERATE	SEVERE
Wetness	Rapidly, well and moderately well drained soils. Water table below 30" during season of use.	Moderately well and imperfectly drained soils. Water table below 20" during season of use.	Imperfectly, poorly, and very poorly drained soils. Water table above 20" during season of use.
Flooding	None.	None during season of use.	Floods during season of use
Permeability	Very rapid to moderate.	Moderately slow and slow.	Very slow.
Slope	0 to 9% (AD).	9 to 15% (E).	Greater than 15% (greater than E).
Surface soil texture ²	SL, FSL, VFSL, L.	SiL, CL, SCL, SiCL, LS and sand other than loose sand.	SC, SiC, C, loose sand subject to severe blowing, organic soils.
Coarse fragments on surface ³	0 to 20%.	20 to 50%. ⁴	Greater than 50%.
Stoniness ⁵ (stony)	Stones greater than 25' apart.	Stones 25 to 5' apart.	Stones less than 5' apart.
Rockiness ⁵ (rock)	no rock exposures.	Rock exposures greater than 30' apart and cover less than 25% of the area.	Rock exposures less than 30' apart & cover greater than 25% of the surface.

1. For information specific to roads and parking lots see Table 1.
2. Surface soil texture influences soil ratings as it affects foot trafficability, dust, soil permeability and erosion hazard.
3. Coarse fragments include both gravels and cobbles.
4. Some gravelly soils may be rated as slight if the content of gravel exceeds 20% by only a small margin providing (a) the gravel is embedded in the soil matrix, or (b) the fragments are less than 3/4 inch in size. See the definition for gravels in the System of Soil Classification for Canada (C.S.S.C., 1970), pp 213-214.
5. Very shallow soils are rated as having a severe soil limitation for rockiness and/or stoniness. See also definitions of rockiness and stoniness in the System of Soil Classification for Canada (C.S.S.C., 1970), pp 213-214.

TABLE 5. GUIDES FOR ASSESSING SOIL LIMITATIONS FOR PICNIC AREAS.

This guide applies to soils considered for intensive use as park-type picnic areas. It is assumed that most vehicular traffic will be confined to access roads.¹ Soil suitability for growing and maintaining vegetation is not a part of this guide, except as influenced by moisture, but is an important item to consider in the final evaluation of site.

Items Affecting Use	Degree of Soil Limitation		
	None to Slight	Moderate	Severe
Wetness	Rapidly, well and moderately well drained soils. Water table below 20" during season of use.	Moderately well and imperfectly drained soils. Water table during season of use may be less than 20" for short periods.	Poorly and very poorly drained soils. Water table above 20" and often near the surface for a month or more during season of use.
Flooding	None during season of use.	May flood once a year for short period during season of use.	Floods more than once a year during season of use.
Slope	0 to 9% (AD).	9 to 15% (E).	Greater than 15% (greater than E).
Surface soil texture ²	SL, FSL, VFSL, L.	SiL, CL, SCL, SiCL, LS, and sand other than loose sand.	SC, SiC, C, loose sand subject to severe blowing, organic soils.
Coarse fragments on surface ³	0 to 20%.	20 to 50% ⁴ .	More than 50%
Stoniness ³	Stones greater than 5' apart.	Stones 2 to 5' apart.	Stones less than 2' apart.
Rockiness ³	Rock exposures roughly 100 to 300 or more feet apart and cover less than 10% of the surface.	Rock exposures 30 to 100' apart and cover about 10 to 25% of the surface.	Rock exposures less than 30' apart and cover greater than 25% of the surface.

1. For information specific to roads or parking lots see Table 1.
2. Surface soil texture influences soil ratings as it affects foot trafficability, dust, soil permeability and erosion hazard.
3. See also definitions for gravel, rockiness and stoniness in the System of Soil Classification for Canada (C.S.S:C., 1970), pp. 213-214. Coarse fragments include both gravels and cobbles.
4. Some gravelly soils may be rated as slight if the content of gravel exceeds 20% by only a small margin provided (a) the gravel is embedded in the soil matrix or (b) the fragments

TABLE 6. GUIDES FOR ASSESSING SOIL LIMITATIONS FOR PLAYING FIELDS.

This guide applies to soils considered for intensive use as playing fields for organized games such as baseball or football. Soil suitability for growing and maintaining vegetation is not a direct consideration in this guide, but is an important item to consider.

Item Affecting Use	Degree of Soil Limitation		
	SLIGHT	MODERATE	SEVERE
Flooding	none during season of use	subject to occasional flooding. Not more than once in 3 years.	subject to more than occasional flooding.
Wetness	rapidly to moderately well drained.	imperfectly drained soils subject to occasional ponding.	poorly and very poorly drained.
Depth to Water table	more than 30 inches during season of use.	20 to 30 inches during season of use.	less than 20 inches during season of use.
Permeability	very rapid to moderate (20 in./hr to 0.6 in./hr.)	moderately slow (0.6 - 0.2 in./hr)	slow and very slow. (less than 0.2 in/hr)
Slope	0 - 2%	2 - 5%	more than 5%
Surface Texture	SL, FSL, VFSL, L	CL, SCL, SiCL, SiL, LS and S other than loose sand.	SC, SiC, C, loose sand, organic
Depth to Bedrock	more than 40 inches	20 to 40 inches	less than 20 inches
Surface Stoniness	slightly stony	moderately stony	very to excessively stony.

TABLE 7. SUITABILITY RATINGS OF SOILS AS SOURCES OF GRAVEL

The main purpose of these ratings is to indicate local sources of gravel. The ratings are based on the probability that soils contain sizable quantities of gravel.

Item Affecting Use	Degree of Soil Suitability		
	GOOD	FAIR	POOR
Unified Soil Group	GW, GP	GP-GM GW-GM	GM, GP-GC, GW-GC (all other groups unsuited)
Flooding	none or occasional		frequent or constant
Wetness	better than poorly drained ¹		poorly and very poorly drained
Depth of overburden	less than 2 feet	2 to 5 feet	more than 5 feet

1. See page 7 for an explanation of drainage classes.

TABLE 8. SUITABILITY RATINGS OF SOILS AS SOURCES OF ROADFILL

The ratings in this table indicate the performance of a soil after it is placed in a road embankment and also the degree of difficulty in excavating the fill material. Ratings of the material are the same as for road location (Table 3) however ratings of factors governing excavation differ.

Item Affecting Use	Degree of Soil Suitability ¹		
	GOOD	FAIR	POOR
Wetness	Rapidly to moderately well drained ²	Imperfectly drained	Poorly and very poorly drained
Engineering Groups Unified Group	GW, GP, GC, SW, SP, SM, SC	ML, CL with P.I. ³ less than 15	CH, MH, OL, OH, Pt, and CL with P.I. more than 15
AASHO Group Index	0 - 4	5 - 8	greater than 8
Stoniness	none to moderately stony	very stony	exceedingly stony
Depth to consolidated bedrock	more than 6 feet	3 to 6 feet	less than 3 feet
Slope	0 - 15%	15 - 30%	more than 30%

1. A rating of unsuited (u) is applied to land units, such as bedrock (R), where no conventional fill material is present.

2. See page 7 for an explanation of drainage classes.

TABLE 9. SUITABILITY RATINGS OF SOILS AS SOURCES OF TOPSOIL

Topsoil, for these ratings, refers essentially to Ah horizon material. In some cases the B, and even C horizon materials could be used for dressing disturbed land. These ratings are intended for use by engineers, landscapers, planners and others who make decisions about selecting, stockpiling and using topsoil. These ratings are based on quality of topsoil and ease of excavation. In addition to the Good, Fair, and Poor ratings described below, an Unsuitable (U) rating is used.

Item Affecting Use	Degree of Suitability ¹		
	GOOD	FAIR	POOR
Texture	SL, FSL, VFSL, L, SiL	CL, SCL, SiCL	LS, S, SC, SiC, C, Organic
Depth of topsoil	more than 6 in.	3 - 6 in.	less than 3 in.
Flooding	none	may flood occasionally	frequently or constantly flooded
Wetness	Drainage class not determining if better than poorly drained		Poorly and very poorly drained
Coarse fragments % by volume	less than 3%	3 - 15%	more than 15%
Slope	less than 9%	9 - 15%	more than 15%
Stoniness	none to slightly stony	moderately stony	very to excessively stony
Salinity of topsoil	E.C. ² 0 - 1 ³	E.C. 1 - 3	E.C. more than 3
Permeability of upper subsoil	moderate	slow	very slow

1. A rating of unsuitable (U) is used for soil and land units that do not have topsoil present.
2. E.C. = electrical conductivity of a saturation extract in mmhos/cm.
3. These are the limits suggested by the Alberta Soil and Feed Testing Laboratory when considering lawn growth.

The decision as to whether or not a soil will be utilized for a specific use, regardless of the soil limitation, is beyond the scope of this report.

Agricultural Capability

The soils have been rated as to their suitability as agricultural cropland. This information is required to make sound decisions on land use where soils are being lost to agricultural production.

The ratings are made using the ARDA Canada Land Inventory, Soil Capability Classification for Agriculture. These classes and subclasses are defined in the Soil Capability Classification for Agriculture. (Canada Land Inventory, 1965).

Briefly the 7 classes are:

Class 1 - Soils in this class have no significant limitations in use for crops.

Class 2 - Soils in this class have moderate limitations that restrict the range of crops or require moderate conservation practices.

Class 3 - Soils in this class have moderately severe limitations that restrict the range of crops or require special conservation practices.

Class 4 - Soils in this class have severe limitations that restrict the range of crops.

Class 5 - Soils in this class have very severe limitations that restrict their capability to producing perennial forage crops, and improvement practices are feasible.

Class 6 - Soils in this class are capable of only producing perennial forage crops and improvement practices are not feasible.

Class 7 - Soils in this class have no capability for arable culture or permanent pasture .

The subclasses are as follows:

- D - the depth of the rooting zone is restricted by soil conditions other than wetness or consolidated bedrock.
- F - low fertility.
- I - inundation by streams or lakes.
- M - low moisture-holding capacity.
- N - presence of enough soluble salts to adversely affect crop growth or restrict the range of crops that can be grown.
- P - stoniness.
- S - used in a collective sense for one or more subclasses.
- T - adverse topography.
- W - excess water other than from flooding.

SECTION II

BLACK DIAMOND - TURNER VALLEY AREA

Location and Extent of Study Area

The area described in this report covers 12 square miles or about 7,700 acres in the vicinity of Black Diamond, and Turner Valley, Alberta. Black Diamond is located in Section 8, Township 20, Range 2, west of the 5th meridian. Turner Valley is located in Section 12, Township 20, Range 3, west of the 5th meridian and is approximately 2 miles south-west of Black Diamond. Black Diamond is approximately 30 miles south-west of Calgary and can be reached by way of Highways 2, 2A and 7.

Physiography of Area

The terrain in this area is composed of steeply sloping foothills, gently undulating uplands, level to nearly level lowlands, very steeply sloping erosion banks and level terraces and flats adjacent to the Sheep River.

The material commonly found on the foothills is residual shale and till; on the uplands till; on the lowlands very fine textured lacustrine and on the terraces and flats alluvial material. The major portion of the area is composed of a level to nearly level lacustrine plain.

The uppermost bedrock formations are the Brazeau Formation, the Alberta Shale Group and the Porcupine Hills Formation (Green R, 1970). The Alberta Shale Group occurs in the foothills belt and is Cretaceous marine, dark gray shale and silty shale. A narrow belt of the Brazeau formation occurs between Black Diamond and Turner Valley and runs roughly parallel to the foothills. The area east of the Sheep River is underlain by the Porcupine Hills Formation. The Brazeau Formation is Tertiary and Upper Cretaceous non-marine greenish-gray

chloritic and feldspathic sandstone and blocky gray mudstone. The Porcupine Hills Formation is Tertiary non-marine, pale gray, calcareous sandstone and mudstone.

Glaciers that originated along the east edge of the mountains extended as far as the fifth meridian. As the ice melted, till was dumped as a mantle over the bedrock and lacustrine material was deposited in glacial lakes. Alluvial material has been more recently deposited on the terraces and flats of the Sheep River.

The area is drained by the Sheep River drainage system.

The Soils

The soils of Alberta are divided into broad soil zones based principally on the color and thickness of the surface Ah horizon (Soil Group Map of Alberta, Alberta Institute of Pedology). This color reflects the climate and vegetation of each zone. The Black Diamond-Turner Valley area is in the Black soil zone because the soils have 6 to 8 inches of black Ah horizon as compared to 4 to 6 inches of Ah horizon in the Shallow Black soil zone. The amount of precipitation is higher than in the Shallow Black and the Dark Brown soil zones. However, the evapotranspiration rate is lower because it is in a slightly cooler climate. The area is in a 3H climate (Bowser, 1967) where the amount of precipitation is adequate but where it is not considered practical to grow wheat because of the frequency of killing frosts. The frost-free period averages between 60 to 75 days as compared to more than 90 days in Climate 1 areas.

The well drained soils developed on till and residual material are Orthic Black Chernozems and the moderately well drained soils developed on lacustrine material are Solodic Black Chernozems. Regosolic soils with no B horizon occur

on the alluvial flats and terraces and on the steeply sloping areas. Solonetzic soils occur in groundwater discharge areas within the lacustrine area. Humic Gleysols are also of common occurrence.

The legend shown on the accompanying map and the soil unit descriptions indicate the classification, texture, and drainage of the soils in the area. The soils were mapped and classified according to the System of Soil Classification for Canada (Canada Soil Survey Committee 1973). Tables 12 and 13 give a brief description of the classification and the horizon designations.

Nineteen soil units were mapped - three on till, eight on lacustrine, one on residual and seven on alluvial material. One soil complex of two soil units was mapped along the narrow drainage courses where Gleysols and Chernozems were not separated because of the scale of mapping. In the following section, generalized descriptions of the dominant soil subgroup in each soil unit in the area are presented.

In these descriptions, the comments and limitations usually refer to the dominant soil unless otherwise indicated. Lime content and salinity have been reported to be low, medium or high according to the following parameters:

Lime Content - L-Low (0-1 percent), M-Medium (1-15 percent)
H-High (15 percent)

Salinity - Electrical Conductivity - L-Low (0-1 mmhos/cm), M-Medium
(1-4 mmhos/cm), H-High (4 mmhos/cm)

Soil Unit: 1-1

Soil Classification: Orthic Black and Gleyed Orthic Black.

Parent Material: moderately fine textured till.

Topography: gently undulating to gently rolling.

Drainage: well to imperfectly drained.

Profile description of dominant soil subgroup:

Horizon	Color	Thickness (inches)	pH	Consistence when dry	USDA * texture	Lime content	Salinity
Ah	Black	6-10	6.5-7.0	soft	L	L	L
Bm	Dark Brown	12-20	7.0-7.5	slightly hard	SiCL-SiC	L	L
Ck	Gray Brown	-	7.5-8.5	-	CL	M-H	L

Comments:

Limitations for selected uses: slight for most uses; moderate to severe for playing fields; fair source of roadfill.

* see pages 5, 6 and 7 for description of texture symbols.

.....

Soil Unit: 1-2

Soil Classification: Orthic Black and Orthic Regosol.

Parent Material: moderately fine textured till.

Topography: rolling.

Drainage: rapidly and well drained.

Profile description of dominant soil subgroup:

Horizon	Color	Thickness (inches)	pH	Consistence when dry	USDA texture	Lime content	Salinity
Ah	Black	6-10	6.5-7.0	soft	L	L	L
Bm	Dark Brown	12-20	7.0-7.5	slightly hard	SiCL-SiC	L	L
Ck	Gray Brown	-	7.5-8.5	-	CL	M-H	L

Comments:

Limitations for selected uses: moderate for most uses; severe for sewage lagoons and playing fields.

Soil Unit: 1-3

Soil Classification: Orthic Regosol, and consolidated bedrock outcrops.

Parent Material: moderately fine textured till.

Topography: strongly rolling and very steeply sloping.

Drainage: rapidly drained.

Profile description of dominant soil subgroup:

Horizon	Color	Thickness (inches)	pH	Consistence when dry	USDA texture	Lime content	Salini
Ahk	Light Brown	2-4	7.0-7.5	soft	L	M	L
Ck	Gray Brown	-	7.5-8.5	-	SiCL-SiC	M-H	L

Comments: Ah horizon much lighter in color than in Orthic Black soils.

Limitations for selected uses: severe for all uses due to steep slopes.

Soil Unit: 2-1

Soil Classification: Solodic Black and Gleyed Solodic Black.

Parent Material: very fine textured lacustrine.

Topography: nearly level to strongly rolling.

Drainage: moderately well and imperfectly.

Profile description of dominant soil subgroup:

Horizon	Color	Thickness (inches)	pH	Consistence when dry	USDA texture	Lime content	Salini
Ah	Black	8-12	6.5-7.0	slightly hard	SiL-CL	L	L
Bnj*	Dark Gray Brown	12-24	7.0-7.5	hard	HvC	L	L
Ck	Gray Brown	-	7.5-8.5	-	HvC	H	L-M

Comments: * j refers to an expression of sodium but failure to meet the specified limits.

Limitations for selected uses: slight to severe for sewage lagoons; severe for roads and permanent buildings with basements; moderate to severe for recreational uses, poor source of roadfill, fair source of topsoil.

Soil Unit: 2-2
 Soil Classification: Gleyed Solodic Black.
 Parent Material: very fine textured lacustrine.
 Topography: nearly level.
 Drainage: imperfectly drained.

Profile description of dominant soil subgroup:

Horizon	Color	Thickness (inches)	pH	Consistence when dry	USDA texture	Lime content	Salin
Ah	Black	8-12	6.5-7.0	slightly hard	SiL-CL	L	L
Bgnj	Dark Gray Brown	12-24	7.0-7.5	hard	HvC	L	L
Ckg	Gray Brown	-	7.5-8.5	-	HvC	H	L-1

Comments: B and C horizons are moderately gleyed and mottled.

Limitations for selected uses: moderate to severe for sewage lagoons; severe for all other uses; fair source of topsoil.

.....

Soil Unit: 2-3
 Soil Classification: Orthic Humic Gleysol and peaty Orthic Humic Gleysol.
 Parent Material: very fine textured lacustrine.
 Topography: depressional.
 Drainage: poorly and very poorly drained.

Profile description of dominant soil subgroup:

Horizon	Color	Thickness (inches)	pH	Consistence when dry	USDA texture	Lime content	Salin
Om	Brown	0-6	5.5-6.5	-	-	-	-
Ahg	Black	6-10	7.0-7.5	hard	SiL-CL	L	L
Bg	Dark Gray	12-24	7.0-7.5	hard	HvC	L	L
Ckg	Gray	-	7.5-8.5	-	HvC	H	L-M

Comments: Profile may have up to 6 inches of peat on the surface. A, B and C horizons are strongly gleyed and mottled.

Limitations for selected uses: severe for all uses due to a seasonal or permanent high water table.

(26)

Soil Unit: 2-4

Soil Classification: Saline Humic Gleysol.

Parent Material: very fine textured lacustrine.

Topography: depressional.

Drainage: poorly drained.

Profile description of dominant soil subgroup:

Horizon	Color	Thickness (inches)	pH	Consistence when dry	USDA texture	Lime content	Salin
Om	Brown	0-6	5.5-6.5	-	-	-	-
Ahg	Black	6-10	7.0-7.5	slightly hard	SiL-CL	L	L
Bng	Dark Gray	12-24	7.0-7.5	hard	HvC	L	L-
Ckg	Gray	-	8.0-8.5	-	HvC	H	H

Comments: A, B, and C horizons are strongly gleyed and mottled, profile may have up to 6 inches of peat on the surface.

Limitations for selected uses: severe for all uses due to a seasonal or permanent high water table.

.....

Soil Unit: 2-5

Soil Classification: peaty Orthic Humic Gleysol.

Parent Material: very fine textured lacustrine.

Topography: depressional.

Drainage: very poorly drained.

Profile description of dominant soil subgroup:

Horizon	Color	Thickness (inches)	pH	Consistence when dry	USDA texture	Lime content	Salin
Om	Brown	6-10	5.5-6.5	-	-	-	-
Ahg	Black	6-10	7.0-7.5	slightly hard	SiL-CL	L	L
Bg	Dark Gray	12-24	7.0-7.5	hard	HvC	L	L
Ckg	Gray	-	8.0-8.5	-	HvC	H	L-M

Comments: A, B, and C horizons are strongly gleyed and mottled.
Profile may have from 6 to 10 inches of peat on the surface.

Limitations for selected uses: severe for all uses due to a seasonal or permanent high water table.

Soil Unit: 2-6

Soil Classification: Black Solonetz, Black solod and Gleyed Black Solonetz.

Parent Material: very fine textured lacustrine.

Topography: nearly level.

Drainage: moderately well and imperfectly drained.

Profile description of dominant soil subgroup:

Horizon	Color	Thickness (inches)	pH	Consistence when dry	USDA texture	Lime content	Salin
Ah	Black	2-4	7.0-7.5	slightly hard	SiL-CL	L	I
Bn	Very Dark Brown	8-12	7.5-8.0	very hard	HvC	L	L-
Csk	Dark Gray	-	8.0-8.5	-	HvC	H	H

Comments: ped surfaces of Bn horizon are organic stained, Bn horizon has columnar structure.

Limitations for selected uses: slight for sewage lagoons; severe for all other uses; poor source of topsoil.

.....

Soil Unit: 2-7

Soil Classification: Gleyed Black Solonetz and Gleyed Black Solod.

Parent Material: very fine textured lacustrine.

Topography: level.

Drainage: imperfectly drained.

Profile description of dominant soil subgroup:

Horizon	Color	Thickness (inches)	pH	Consistence when dry	USDA texture	Lime content	Salin
Ah	Black	2-4	7.0-7.5	slightly hard	SiL-CL	L	L
Bng	Very Dark Brown	8-12	7.5-8.0	very hard	HvC	L	L-M
Cskg	Dark Gray	-	8.0-8.3	-	HvC	H	H

Comments: B and C horizons moderately gleyed and mottled. B horizon is columnar in structure and has dark organic staining on ped surfaces.

Limitations for selected uses: moderate for sewage lagoons, severe for all other uses.

Soil Unit: 2-8

Soil Classification: Orthic Regosol with (till and consolidated bedrock outcrops).

Parent Material: very fine textured lacustrine.

Topography: very steeply sloping.

Drainage: rapidly drained.

Profile description of dominant soil subgroup:

Horizon	Color	Thickness (inches)	pH	Consistence when dry	USDA texture	Lime content	Salin
Ahk	Dark Gray	3-6	7.0-7.5	soft	SiL-CL	M	L
Ck	Gray Brown	-	8.0-8.5	hard	HvC	H	L-1

Comments: Ah is lighter in color due to a lower organic matter content than in Orthic Black soils.

Limitations for selected uses: severe for all uses due to steep slopes.

Soil Unit: 3-1

Soil Classification: Orthic Regosol with consolidated bedrock outcrops.

Parent Material: medium textured residual.

Topography: very steeply sloping.

Drainage: rapidly drained.

Profile description of dominant soil subgroup:

Horizon	Color	Thickness (inches)	pH	Consistence when dry	USDA texture	Lime content	Salin
Ahk	Dark Gray Brown	3-6	7.0-7.5	soft	L	M	L
Ck	Gray	-	8.0-8.5	slightly hard	L-CL	H	L

Comments: Ah is lighter in color due to a lower organic matter content than in Orthic Black soils.

Limitations for selected uses: severe for all uses due to steep slopes.

Soil Unit: 4-1

Soil Classification: Orthic Regosol and Gleyed Orthic Regosol.

Parent Material: medium textured alluvial.

Topography: nearly level.

Drainage: well to imperfectly drained.

Profile description of dominant soil subgroup:

Horizon	Color	Thickness (inches)	pH	Consistence when dry	USDA texture	Lime content	Salini
Ahk	Dark Gray Brown	5-8	7.0-7.5	soft	SiL	M	L
Ck	Gray	-	8.5-8.0	-	SiL	H	L

Comments: Ah lighter in color than in Orthic Black soils due to lower organic matter content.

Limitations for selected uses: moderate for road location, permanent buildings, sewage lagoons and recreational uses; fair source of foadfill; fair to good source of topsoil.

.....

Soil Unit: 4-2

Soil Classification: Orthic Regosol and Gleyed Orthic Regosol.

Parent Material: very coarse textured alluvial.

Topography: nearly level.

Drainage: rapidly to imperfectly drained.

Profile description of dominant soil subgroup:

Horizon	Color	Thickness (inches)	pH	Consistence when dry	USDA texture	Lime content	Salini
Ahk	Dark Gray Brown	5-8	7.0-7.5	soft	LFS	M	L
Ck	Gray	-	7.5-8.0	-	FS	H	L

Comments: Ah lighter in color than in Orthic Black soils due to lower organic matter content.

Limitations for selected uses: slight for road location, moderate for permanent building with basements, severe for sewage lagoons, and recreational uses; good source of roadfil poor source of topsoil.

Soil Unit: 4-3

Soil Classification: Rego Humic Gleysol and peaty Rego Humic Gleysol.

Parent Material: medium textured alluvial.

Topography: depressional.

Drainage: poorly and very poorly drained.

Profile description of dominant soil subgroup:

Horizon	Color	Thickness (inches)	pH	Consistence when dry	USDA texture	Lime content	Salin
Om	Brown	0-6	5.5-6.5	-	-	-	-
Ahkg	Black	6-10	7.0-7.5	soft	SiL	M	L
Ckg	Gray	-	8.0-8.5	-	SiL	H	L-

Comments: A and C horizons are strongly gleyed and mottled. Profile may have up to 6 inches of peat on the surface.

Limitations for selected uses: severe for all uses due to a seasonal or permanent high water table.

Soil Unit: 4/5 - 1

Soil Classification: Orthic Regosol and Gleyed Orthic Regosol.

Parent Material: medium textured material over gravelly alluvial.

Topography: nearly level.

Drainage:* well to imperfectly drained.

Profile description of dominant soil subgroup:

Horizon	Color	Thickness (inches)	pH	Consistence when dry	USDA texture	Lime content	Salin
Ahk	Dark Gray Brown	5-8	7.0-7.5	soft	SiL	M	L
Ck	Gray Brown	12-18	7.5-8.0	-	SiL	M-H	L
IICk	Gray Brown	-	7.5-8.0	-	gravel	M-H	L

Comments: usually has 18" - 30" of SiL over poorly sorted gravel.

* drainage depends on depth to water table.

Limitations for selected uses: moderate for road location, permanent buildings with basements, recreational uses; severe for sewage lagoons; fair source of gravel; good source of roadfill and fair source of topsoil.

Soil Unit: 4/5 - 2

Soil Classification: Orthic Regosol and Gleyed Orthic Regosol.

Parent Material: very coarse textured material over gravelly alluvial.

Topography: nearly level.

Drainage:* rapidly to imperfectly drained.

Profile description of dominant soil subgroup:

Horizon	Color	Thickness (inches)	pH	Consistence when dry	USDA texture	Lime content	Salin
Ahk	Dark Gray Brown	5-8	7.0-7.5	-	LFS	L	L
Ck	Gray Brown	12-18	8.0-8.5	-	FS	M-H	L
IICk	Gray Brown	-	8.0-8.5	-	G	M-H	L

Comments: usually has 18 to 30 inches of fine sand over gravel.

* drainage depends on depth to water table.

Limitations for selected uses: slight to moderate for road location, moderate for permanent buildings with basements; severe for sewage lagoons; moderate for recreational uses; good source of gravel and roadfill; poor source of topsoil.

Soil Unit: 5-1

Soil Classification: Orthic Regosol and Gleyed Orthic Regosol.

Parent Material: very gravelly alluvial on terraces.

Topography: nearly level.

Drainage:* rapidly to imperfectly drained.

Profile description of dominant soil subgroup:

Horizon	Color	Thickness (inches)	pH	Consistence when dry	USDA texture	Lime content	Salin
Ahk	Gray Brown	2-4	7.0-7.5	soft	GLS	M	L
Ck	Gray Brown	-	8.0-8.5	-	GLS	H	L

Comments: cobbles up to 4" in diameter, 1 to 2 feet apart on surface.

Limitations for selected uses: moderate for road location, severe for permanent buildings with basements and sewage lagoons; recreational uses; good source of gravel and roadfill; poor source of topsoil.

Soil Unit: 5-2-cb
 Soil Classification: Orthic Regosol with gravel outcrops.
 Parent Material: very gravelly alluvial on flats.
 Topography: nearly level.
 Drainage: rapidly drained.

Profile description of dominant soil subgroup:

Horizon	Color	Thickness (inches)	pH	Consistence when dry	USDA texture	Lime content	Salin
Ahk	Gray Brown	2-4	7.0-7.5	soft	GLS	M	L
Ck	Gray	-	8.0-8.5	-	G	H	L

Comments: cobbles 2 to 6 inches in diameter, less than 2 feet apart on surface.

Limitations for selected uses: Severe for all uses due to flooding, stoniness or texture.

Soil Survey Interpretations

Soil survey interpretations are included with this report so that the soils information may be more readily understood and used. Soil and landscape properties and hazards that will affect the probable uses of the soil are:

- 1) Shallow depth to seasonal or permanent water table
- 2) High sulphate content
- 3) Low permeability
- 4) Steep slopes
- 5) Flooding hazard
- 6) Thin topsoil
- 7) Potential frost action
- 8) High percentage of organic matter
- 9) Soil texture
- 10) Groundwater contamination hazard
- 11) Shallow depth to consolidated bedrock
- 12) Cobbly surface
- 13) Shrink-swell potential
- 14) Erosion potential
- 15) Low topsoil quality
- 16) Low bearing capacity
- 17) Low ability to sustain foot or vehicular traffic
- 18) Poor vegetative rooting medium for grasses

The ten uses for which the soils have been rated in this area are:

- 1) Road location
- 2) Permanent buildings with basements
- 3) Sewage lagoons
- 4) Camp areas and lawns
- 5) Picnic areas
- 6) Playing fields
- 7) A source of gravel
- 8) A source of roadfill
- 9) A source of topsoil
- 10) Capability for agriculture

The limitations or the suitability of the various mapping units for the selected uses are determined by referring to Tables 1 and 2 and are shown in Table II with the properties that affect the uses being indicated by number.

Limitations for Road Location

1. Shallow depth to a seasonal or permanent water table affects potential frost action, shrink-swell potential and cost of construction and maintenance.
2. Steep slopes affect the cost of construction and maintenance.
3. Flooding hazard affects the cost of construction and maintenance.
4. Soil texture affects the bearing capacity, shrink-swell potential, potential frost action and cost of construction and maintenance.

Limitations for Permanent Buildings with Basements

1. Shallow depth to a seasonal or permanent water table affect potential frost action, shrink-swell potential and cost of construction and maintenance.
2. High sulphate content affects potential concrete corrosion and cost of construction.

The U.S. Bureau of Reclamation Concrete Manual (1966) recognizes the following concrete corrosion categories based on the presence of soluble sulphate in the soil solution:

negligible attack - less than 0.10%
mild but positive attack - 0.10 to 0.20%
considerable attack - 0.02 to 0.50%
severes attack - greater than 0.50%

Table 10 shows that soils in units 2-6 and 2-7 have 0.56% soluble sulphate and would therefore have severe limitations in regard to concrete corrosion due to a high sulphate content.

3. Steep slopes affect the cost of construction and maintenance.
4. Soil texture affects shrink-swell potential, potential frost action and cost of construction and maintenance.
5. Flooding hazard affects the cost of construction and maintenance.

Limitations for Sewage Lagoons

1. Shallow depth to a seasonal or permanent water table affects the cost of construction and maintenance.
2. Soil texture affects the groundwater contamination hazard and the cost of construction and maintenance.
3. Steep slopes affect the cost of construction and maintenance.
4. Flooding hazard affects the cost of construction and maintenance.
5. High percentage of organic matter as in poorly drained soils may cause the growth of aquatic plants that are detrimental to the proper functioning of the lagoon.

Limitations for Camp Areas, Lawns, Picnic Areas and Playing Fields

1. Shallow depth to a seasonal or permanent water table affects the soils ability to sustain foot or vehicular traffic and makes a poor vegetative rooting medium for grasses.
2. Soil texture affects the ability to sustain foot or vehicular traffic and erosion potential.
3. Low permeability and thin topsoil affects the ability to sustain foot or vehicular traffic, erosion potential and makes a poor vegetative rooting medium for grasses.
4. Flooding hazard affects the cost of construction and maintenance.

Suitability as a Source of Gravel

1. Flooding hazard affects the cost of excavation.

Suitability as a Source of Roadfill

1. Shallow depth to a seasonal or permanent water table affects the cost of excavation.
2. Soil texture affects the bearing capacity.
3. Steep slopes and shallow depth to consolidated bedrock affect the cost of excavation.

Suitability as a Source of Topsoil

1. Shallow depth to a seasonal or permanent water table, flooding hazard and steep slopes affect the cost removal in the borrow area.
2. Soil texture and cobbly surface affects the topsoil quality.
3. Steep slopes, low permeability and thin topsoil affects the erosion potential in the borrow area.

Capability for Agriculture

According to Bowser (1967) the Black Diamond area is in a 3H agro-climate area where the frost-free period makes it impractical to grow wheat even though the amount of precipitation is adequate. Therefore, the best soils would be classified as 3C. Other limiting factors such as adverse topography, excessive wetness, inundation by streams or lakes, restriction of depth of rooting zone, salinity, surface stoniness and low moisture-holding capacity place many of the soils in Classes 4, 5, 6 and 7 as indicated in Table 11.

TABLE 11. LIMITATIONS AND SUITABILITY OF SOILS FOR SELECTED USES.

Mapping Unit	Degree of Limitation for:						Suitability as a Source of:			Agriculture Capability
	Road Location	Permanent Buildings with basements	Sewage* Lagoons	Camp areas and Lawns	Picnic areas	Playing Fields	Gravel	Roadfill	Topsoil	
1-1/bc	M9,16	M9,13	S-M4	S	S	M4	U	F9	G	3c
1-1/d	M-V9,4,16	MV9,4,13	V4	M4,14	M4,14	V4	U	F9	F4	4t
1-2/e	V9,4,16	M-V,9,4,13	V4	M-V4,14	M-V4,14	V4	U	P-F4,9	P-F4	5t
1-3/f	V9,4,16	V9,4,13	V4	V4,14	V4,14	V4,14	U	P4,9,11	P4	5t
1-3/H	V9,4,11,16	V9,4,11,13	V4,11	V4,11,14	V4,14	V4,11,14	U	P9,4,11	P4	7t
2-1/ab	V9,13,16	V9,13	S-M4	M3,9,17	M9,9,17	M9,3,17	U	P9	P9,15	3c
2-1/f	V9,4,13,16	V9,4,13	V4	V3,4,9,14	V4,9,14	V3,4,9,14	U	P9	P4,9,15	5t
2-2/a	V9,1,13,16	V9,1,13	S-M1	V1,3,9,17	M1,9,17	V1,3,9,17	U	P1,9	P1,9,15	3c
2-3/A	V9,1,7,13,16	V9,1,7,13	V1,8	V1,3,9,17,18	V1,9,17,18	V1,3,9,17,18	U	P1,9	P1,9,15	4w ⁸ 5w ^{2**}
2-4/A	V9,1,7,13,16	V9,1,7,2,13	V1,8	V1,9,17,18	V1,9,17,18	V1,9,17,19	U	P1,9	P1,9,15	5w ⁿ
2-5/A	V9,1,7,13,16	V9,1,7,13	V1,8	V1,9,17,18	V1,9,17,18	V1,9,17,18	U	P9,1	P1,9,15	5w
2-6/a	V9,13,16	V9,2,13	S	V3,6,9,17	M9,17	V3,6,9,17	U	P9	P3,6,9	5d ⁶ 4d ^{4**}
2-7/a	V9,1,13,16	V9,1,2,13	M1	V1,3,6,9,17	M1,9,17	V1,3,6,9,17	U	P1,9	P1,3,6,19,15	5d
2-8/G	V9,4,13,16	V9,4,13,11	V4	V4,9,3,14,17	V4,9,14,17	V4,9,3,14	U	P4,9,11	P4,9,15	6t
2-8/H	V9,4,13,16	V9,4,13,11	V4	V4,9,3,14	V4,9,14,17	V4,9,3,14	U	P4,9,11	P4,9,13	7t
3-1/FG	M-V4	V4,11	V4	V4,11,14	V4,14	V4,11,14	U	P4,11	P4	6t
4-1/a	M9,5,16	M9,5	M5,9	M5	M5	M5	U	F9	FS	3t
4-2/a	M5	M5	V1,5,9,10	M-V5,9,17	M-V5,9,17	M-V5,5,9,17	U	G	PS,9,15	4m
4-3/A	V1,5,7,9	V1,5,7,9	V1,5,8,9	V1,5,17,18	V1,5,17,18	V1,5,17,18	U	P1,9	P1,5,9	4w ⁸ 5w ^{2**}
4/5-1/a	M5,9	M5,9	V5,10	M-V5,9	M-V5,9	M-V5,9	P5	G	F5	3c
4/5-2/a	M5	M5	V5,10	V5,9,17	V5,9,17	V5,9,17	P5	G	P5,9,15	4m
5-1/cb-a	M5	M5	V5,10	V5,12,17	V5,12,17	V5,12,17	P5	G	P5,12,15	5p
5-2/cb-a	V5	V5	V5,10	V5,12,17	V5,12,17	V5,12,17	P5	G	P5,9,12,15	6 ¹ p

S - slight; M - moderate; V - severe; G - good; F - fair; P - poor; U - unsuited.

* Limitations may be lessened considerably if lagoon is made of impermeable materials from another site, and embankments are sufficiently high to prevent entrance of floodwater.

** Small arabic numerals placed after a class numeral give the approximate proportion of the class out of a total of 10.

Limiting Soil and Landscape Properties and Hazards

- Seasonal or permanent high water table
- High sulphate content
- Low permeability
- Steep slopes
- Flooding hazard
- Thin topsoil
- Potential frost action
- High percentage of organic matter
- Soil texture
- Groundwater contamination hazard
- Shallow depth to consolidated bedrock
- Cobbly surface
- High shrink-swell potential
- Erosion potential
- Low topsoil quality
- Low bearing capacity
- Low ability to sustain foot or vehicular traffic
- Poor vegetative rooting medium for grasses

GLOSSARY

This is included to define terms commonly used in the report; it is not a comprehensive soil glossary.

- aeolian (eolian) deposit - material deposited by wind, includes both loess and dune sand.
- aggregate - a group of soil particles cohering so as to behave mechanically as a unit.
- alluvial deposit - material deposited by moving water.
- aspect - orientation of the land surface with respect to compass direction.
- Atterberg limits - see plastic limit, liquid limit.
- available plant nutrients - that portion of any element or compound in the soil that can be readily absorbed and assimilated by growing plants.
- cation - an ion carrying a positive charge of electricity. The common soil cations are calcium, magnesium, sodium, potassium and hydrogen.
- cation-exchange capacity (C.E.C.) - a measure of the total amount of exchangeable cations that can be held by the soil. It is expressed in terms of milliequivalents/100 grams of soil.
- coarse fragments - rock or mineral particles greater than 2 mm in diameter.
- colluvium - a heterogeneous mixture of material that has been deposited mainly by gravitational action.
- creep - slow mass movement of soil material down rather steep slopes primarily under the influence of gravity, but aided by saturation with water and alternate freezing and thawing.
- edaphic - (i) of or pertaining to the soil, (ii) resulting from, or influenced by, factors inherent in the soil or other substrate rather than by climatic factors.
- eluviation - the removal of soil material in suspension or in solution from a layer or layers of the soil.
- erosion - the wearing away of the land surface by running water, wind, or other erosive agents. It includes both normal and accelerated soil erosion. The latter is brought about by changes in the natural cover or ground conditions and includes those due to human activity.

field capacity - the percentage of water remaining in a soil after having been saturated and after free drainage has practically ceased.

glacio-fluvial deposits - material moved by glaciers and subsequently deposited by streams flowing from the melting ice.

gley - gleying is a reduction process that takes place in soils that are saturated with water for long periods of time. The horizon of most intense reduction is characterized by a gray, commonly mottled appearance, which on drying shows numerous rusty brown iron stains or streaks. Those horizons in which gleying is intense are designated with the subscript g.

groundwater - that portion of the total precipitation which at any particular time is either passing through or standing in the soil and the underlying strata and is free to move under the influence of gravity.

horizon - a layer in the soil profile approximately parallel to the land surface with more or less well-defined characteristics that have been produced through the operation of soil forming processes. Soil horizons may be organic or mineral.

illuviation - the process of deposition of soil material removed from one horizon to another in the soil, usually from an upper to a lower horizon in the soil profile. Illuviated compounds include silicate clay, iron and aluminum hydrous oxides and organic matter.

infiltration - the downward entry of water into the soil.

lacustrine deposit - material deposited in lake water and later exposed either by a lowering of the water or by uplift of the land.

liquid limit (upper plastic limit) - the water content at which a pat of soil, cut by a groove of standard dimensions, will flow together for a distance of 12 mm under the impact of 25 blows in a standard liquid limit apparatus.

lithic - a soil subgroup modifier that indicates a bedrock contact within 50 cm (20 in.) of the soil surface.

morphology, soil - the makeup of the soil, including the texture, structure, consistence, colour, and other physical, mineralogical and biological properties of the various horizons of the soil profile.

mottles - spots or blotches of different color or shades of color interspersed with the dominant color. Mottling in soils usually indicates poor aeration and drainage.

- organic matter - the decomposition residues of plant material derived from:
(i) plant materials deposited on the surface of the soil, and (ii) roots that decay beneath the surface of the soil.
- parent material - unconsolidated mineral material or peat from which the soil profile develops.
- peat - unconsolidated soil material consisting largely of undecomposed to partially decomposed organic matter accumulated under conditions of excessive moisture.
- ped - a unit of soil structure such as a prism, block or granule formed by natural processes (in contrast to a clod which is formed artificially).
- pedology - those aspects of soil science involving the constitution, distribution, genesis and classification of soils.
- percolation, soil water - the downward movement of water through soil. Especially the downward flow of water in saturated or nearly saturated soil at hydraulic gradients of the order of 1.0 or less.
- permeability - the ease with which gases, liquids, or plant roots penetrate or pass through a bulk mass of soil or a layer of soil. Since different horizons of soil vary in permeability, the particular horizon under question should be designated.
- pH - a notation used to designate the relative acidity or alkalinity of soils and other materials. A pH of 7.0 indicates neutrality, higher values indicate alkalinity, and lower values acidity.
- phase, soil - a subdivision of a taxonomic class based on soil characteristics or combinations thereof which are considered to be potentially significant of man's use or management of the land.
- plastic limit - water content at which a soil will just begin to crumble when rolled into a thread approximately 3 mm in diameter.
- plasticity index - the numerical difference between the liquid and the plastic limit.
- profile - a vertical section of the soil throughout all its horizons and extending into the parent material.
- relief - the elevations or inequalities of the land surface when considered collectively. Minor configurations are referred to as "microrelief".
- residual material - unconsolidated and partly weathered mineral material accumulated by disintegration of consolidated rock in place.

saline soil - a soil containing enough soluble salts in such quantities that they interfere with the growth of most crop plants.

seepage (groundwater) - the emergence of water from the soil over an extensive area in contrast to a spring where it emerges from a local spot.

soil consistency - (i) the resistance of a soil material to deformation or rupture.
(ii) the degree of cohesion or adhesion of the soil mass. Terms used for describing consistency at various soil moisture conditions are:

wet soil - non-plastic, slightly plastic, plastic, very plastic.

moist soil - loose, friable, firm, very firm, extremely firm.

dry soil - loose, soft, hard, very hard, extremely hard.

soil structure - the combination or arrangement of primary soil particles into secondary particles, units or peds, e.g. prismatic, columnar, blocky, platy.

soil unit - a defined aggregate of soil bodies occurring together in an individual and characteristic pattern over the land surface.

solum (plural-sola) - the part of the soil profile that is above the parent material and in which the processes of soil formation are active. It comprises the A and B horizons.

texture (soil) - the relative proportions of the various sized soil separates in a soil as described by the textural class names.

till - unstratified glacial drift deposited directly by ice and consisting of non-sorted clay, silt, sand, and boulders.

watertable - the upper limit of the part of the soil or underlying rock material that is wholly saturated with water.

TABLE 12. CANADIAN SOIL CLASSIFICATION SYSTEM

<u>ORDER</u>	<u>GREAT GROUP</u>	<u>DISTINGUISHING CHARACTERISTICS</u>
1. Chernozemic (Developed under grassland and transitional grassland-forest communities)	Brown Dark Brown Black Dark Gray	Light Brown Ah horizon Dark Brown Ah horizon Black Ah horizon Have L-H surface horizons typical of forest vegetation
2. Solonetzic (Columnar or prismatic B horizon and a saline C horizon; Ca/Na ratio of B horizon is less than 10)	Solonetz Solodized Solonetz Solod	Ah horizon — Bnt horizon Ah — Ae — Bnt Ah — Ae — AB — Bnt
3. Luvisolic (Developed in forest areas; accumulation of clay in the B horizon)	Gray Brown Luvisol Gray Luvisol	(L-H) — Ah — Ae — Bt; Mull-like Ah horizon L-H — (Ah) — Ae — Bt
4. Podzolic (Accumulation of Fe+Al and/or organic matter in the B horizon)	Humic Podzol Ferro-Humic Podzol Humo-Ferric Podzol	Bh > 4" which contains > 1% O.C. < 0.3% Fe Bhf > 4" which contains > 5% O.C. > 0.6% Fe+Al Bf > 2" which contains < 5% O.C. > 0.6% Fe+Al
5. Brunisolic (Generally weakly developed B horizons)	Melanic Brunisol Eutric Brunisol Sombric Brunisol Dystric Brunisol	Ah > 2", Bm > 2"; pH > 5.5 Ah < 2", Bm > 2"; pH > 5.5 Ah > 2", Bm > 2"; pH < 5.5 Ah < 2", Bm > 2"; pH < 5.5
6. Regosolic (Weakly developed or young soils; no B horizon)	Regosol	(L-H) — Ah — C; no B horizon
7. Gleysolic (Poorly drained and show mottling and gleying)	Humic Gleysol Gleysol Luvic Gleysol	Ah > 3" Ah < 3" Have Aeg and Btg horizons
8. Organic (Contains > 17% organic carbon are > 24" in depth if dominantly fibric or > 16" if dominantly mesic or humic)	Fibrisol Mesisol Humisol Folisol	Large amount of well preserved fiber Partially decomposed fiber Well decomposed fiber (Black)

TABLE 13. DEFINITION OF SOIL HORIZON SYMBOLS (after C.S.S.C., 1973)

Organic Layers

Organic layers are found at the surface of some mineral soils, and may occur at any depth beneath the surface in buried soils, or overlying geologic deposits. They contain more than 17% organic carbon by weight. Two groups of these layers are recognized.

- O - This is an organic layer developed mainly from mosses, rushes, and woody materials.
- Of - The fibric layer is the least decomposed of all the organic soil materials. It has large amounts of well-preserved fibre that are readily identifiable as to botanical origin.
- Om - The mesic layer is the intermediate stage of decomposition with intermediate amounts of fibre, bulk density and water-holding capacity. The material is partly altered both physically and biochemically. A mesic layer is one that fails to meet the requirements of fibric or of humic.
- Oh - The humic layer is the most highly decomposed of the organic soil materials. It has the least amount of fibre, the highest bulk density, and the lowest saturated water-holding capacity. It is very stable and changes very little physically or chemically with time unless it is drained.

L-F-H- These organic layers develop primarily from leaves, twigs, woody materials, and a minor component of mosses.

- L - This is an organic layer characterized by an accumulation of organic matter in which the original structures are easily discernible.
- F - This is an organic layer characterized by an accumulation of partly decomposed organic matter. The original structures in part are difficult to recognize. The layer may be partly comminuted by soil fauna, as in moder¹, or it may be partly decomposed and permeated by fungal hyphae, as in mor¹.
- H - This is an organic layer characterized by an accumulation of decomposed organic matter in which the original structures are indiscernible. This material differs from the F layer by its greater humification chiefly through the action of organisms. This layer is a zoogenous humus form consisting mainly of spherical or cylindrical droppings of microarthropods. It is frequently intermixed with mineral grains, especially near the junction with a mineral layer.

Master Mineral Horizons and Layers

Mineral horizons are those that contain less organic matter than that specified for organic layers.

- A - This is a mineral horizon or horizons formed at or near the surface in the zone of removal of materials in solution and suspension, or of maximum in situ accumulation of organic matter, or both. Included are:

(TABLE 13 - cont.)

- (1) horizons in which organic matter has accumulated as a result of biological activity (Ah);
- (2) horizons that have been eluviated of clay, iron, aluminum, or organic matter, or all of these (Ae).
- B** - This is a mineral horizon or horizons characterized by one or more of the following:
- (1) an enrichment in silicate clay (Bt).
- (2) an alteration by hydrolysis, reduction, or oxidation to give a change in color or structure from horizons above or below (Bm and Bg).
- (3) a prismatic or columnar structure that exhibits pronounced coatings or stainings and significant amounts of Na (Bn).
- C** - This is a mineral horizon or horizons comparatively unaffected by the pedogenic processes operative in A and B, excepting the process of gleying or the accumulation of carbonates and soluble salts.
- R** - This is consolidated bedrock that is too hard to break with the hands or dig with a spade when moist, and that does not meet the requirements of a C horizon. The boundary between the R layer and any overlying unconsolidated material is called a lithic contact.

Lowercase Suffixes

- b** - A buried soil horizon.
- e** - A horizon characterized by the removal of clay, iron, aluminum, or organic matter alone, or in combination. When dry, it is higher in color value by 1 or more units than an underlying B horizon. It is used with A (Ae, Ahe).
- g** - A horizon characterized by gray colors, or prominent mottling, or both, indicative of permanent or periodic intense reduction. Chromas of the matrix are generally 1 or less.
- h** - A horizon enriched with organic matter. When used with A it must show one Munsell unit of value darker than the horizon below, or have 0.5% more organic matter than the IC. It contains less than 17% organic carbon by weight.
- k** - Denotes the presence of carbonate as indicated by visible effervescence when dilute HCl is added.
- m** - A horizon slightly altered by hydrolysis, oxidation, or solution, or all three, to give a change in color or structure, or both.
- n** - A horizon in which the ratio of exchangeable Ca to exchangeable Na is 10 or less. When used with B it must also have the following properties: prismatic or columnar structure, dark coatings on ped surfaces, and hard to very hard consistence when dry.

(TABLE 13 - cont.)

- s -A horizon with salts which may be detected as crystals or veins, as surface crusts, by distressed crop growth or by presence of salt-tolerant plants. It is most commonly used with C and k.
- t -A horizon enriched with silicate clay. It is used with B (Bt, Btg).

ACKNOWLEDGEMENTS

Mr. Z. Widtman drafted the final soils map and Mr. L. Knapik compiles section 1 of the report. Mr. J. Beres determined the physical properties and Messrs. W. McKean and A. Schwarzer the chemical properties of the soils. Mrs. Cecile Lirette edited and typed the report. Field assistance was given by Messrs. M. Nock and G. Cormin. Special acknowledgement is given to the many property owners whose cooperation allowed soil investigations to be conducted on their land.

REFERENCES

- Alberta Institute of Pedology. Soil Group Map of Alberta. Available from Alberta Soil Survey.
- Allemeir, K.A. 1973. Application of Pedological Soil Surveys to Highway Engineering in Michigan. *Geoderma* 10: 87-98.
- Bowser, W.E. 1967. Agro-Climatic Areas of Alberta. Alberta Soil Survey, Univ. of Alberta. Edmonton, Alberta.
- Bartelli, L.J., A.A. Klingebiel, J.V. Baird and M.R. Heddleson (eds). 1966. Soil Survey for Land Use Planning. *Soil Sci. of Amer.* and *Amer. Soc. of Agronomy*, Madison, Wisc.
- Canada Soil Survey Committee. 1970. The System of Soil Classification for Canada. Canada Dept. of Agriculture, Ottawa, Ontario.
-
1973. Proceedings of the Ninth Meeting of the Canada Soil Survey Committee. Canada Dept. of Agriculture, Ottawa, Ontario.
- Canada Land Inventory. 1965. Soil Capability Classification for Agriculture. CLI Report No. 2., Dept. of Forestry, Canada.
- Green, R. 1970. Geological Map of Alberta. Research Council of Alberta Map 35.
- Lindsay, J.D., M.D. Scheelar and A.G. Twardy. 1972. Soil Survey for Urban Development, Edmonton, Alberta. *Geoderma* 10: 68-75.
- Montgomery, P.H. and F.C. Edminster. 1966. Use of soil surveys in planning for recreation. In *Soil Surveys for Land Use Planning* (ref. No.2).

Portland Cement Association. 1962. P.C.A. Soil Primer. 33 West Grand Ave., Madison, Wisc.

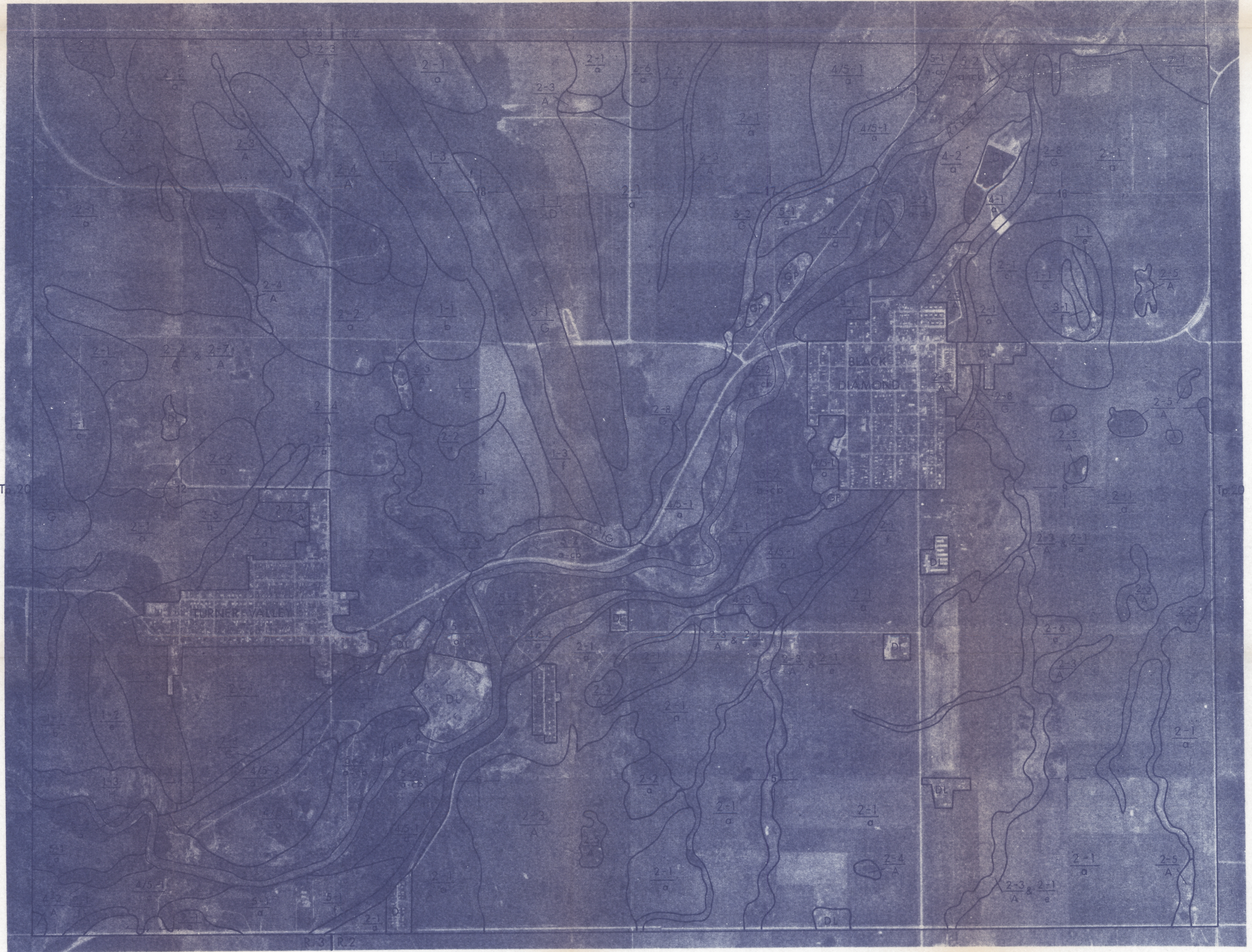
United States Army Corps of Engineers. 1962. Pavement design for frost conditions. E.M. 1110-1-306, p. 5-8.

United States Bureau of Reclamation. 1966. Concrete Manual. United States Dept. of the Interior, Bureau of Reclamation, 7th ed.

U.S.D.A. Soil Conservation Service. 1971. Guide for Interpreting Engineering Uses of Soils. U.S. Govt. Printing Office, Washington, D.C.

Wyatt, F.A., et all. 1942. Soil Survey of Blackfoot and Calgary Sheets. Univ. of Alberta Bull. 39.

SOIL SURVEY OF SELECTED AREAS ADJACENT TO THE TOWN OF BLACK DIAMOND AND TURNER VALLEY
W5

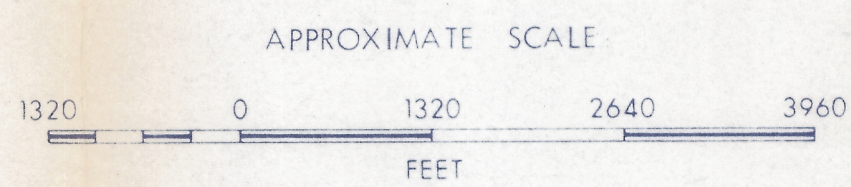


Soils Legend:

PARENT MATERIAL	SOIL UNIT	SURFACE TEXTURE	DRAINAGE CLASSES	DOMINANT SUBGROUP	SIGNIFICANT SUBGROUPS
moderately fine textured till	1-1	L	well to imperfectly	Orthic Black	Gleyed Orthic Black
	1-2	L	rapidly & well	Orthic Black	Orthic Regosol
	1-3	L	rapidly	Orthic Regosol	(consolidated bedrock outcrops)
very fine textured lacustrine	2-1	CL	moderately well & imperfectly	Solodic Black	Gleyed Solodic Black
	2-2	CL	imperfectly	Gleyed Solodic Black	
	2-3	CL	poorly & very poorly	Orthic Humic Gleysol	peaty Orthic Humic Gleysol
	2-4	CL	poorly	Saline Humic Gleysol	
	2-5	CL	very poorly	peaty Orthic Humic Gleysol	
	2-6	CL	moderately well & imperfectly	Black Solonetz	Black Solod, Gleyed Black Solonetz
	2-7	CL	imperfectly	Gleyed Black Solonetz	Gleyed Black Solod
	2-8	CL	rapidly	Orthic Regosol	(fill & consolidated bedrock outcrops)
medium textured residual	3-1	L	rapidly	Orthic Regosol	(consolidated bedrock outcrops)
medium to very coarse textured alluvial	4-1	SiL	well to imperfectly	Orthic Regosol	Gleyed Orthic Regosol
	4-2	LFS	rapidly to imperfectly	Orthic Regosol	Gleyed Orthic Regosol
	4-3	SiL	poorly & very poorly	Rego Humic Gleysol	peaty Rego Humic Gleysol
medium to very coarse textured material over gravelly alluvial	4/5-1	SiL	well to imperfectly	Orthic Regosol	Gleyed Orthic Regosol
	4/5-2	LFS	rapidly to imperfectly	Orthic Regosol	Gleyed Orthic Regosol
very gravelly alluvial	5-1	GLS	rapidly to imperfectly	Orthic Regosol	Gleyed Orthic Regosol
	5-2/cb	GLS	rapidly	Orthic Regosol	(gravel)

TOPOGRAPHIC CLASSES

Simple topography	Slope %	Complex topography
A depressional to level	0 to 0.5	a nearly level
B very gently sloping	0.5+ to 2	b gently undulating
C gently sloping	2+ to 5	c undulating
D moderately	5+ to 9	d gently rolling
E strongly	9+ to 15	e moderately rolling
F steeply sloping	15+ to 30	f strongly rolling
G very steeply sloping	30+ to 60	g hilly
H extremely sloping	over 60	h very hilly



Base map from uncontrolled mosaic
Mapped and Compiled by: M.D. Scheelar
Soil Division

Alberta
RESEARCH COUNCIL
1975

- D. L. - Disturbed Land
- G. P. - Gravel Pit
- Soil Line

Surface Texture

- L - Loam
- CL - Clay Loam
- SiL - Silty Loam
- LFS - Loam, fine sand
- GLS - Gravelly, loamy sand

Phases

- cb - cobble phase