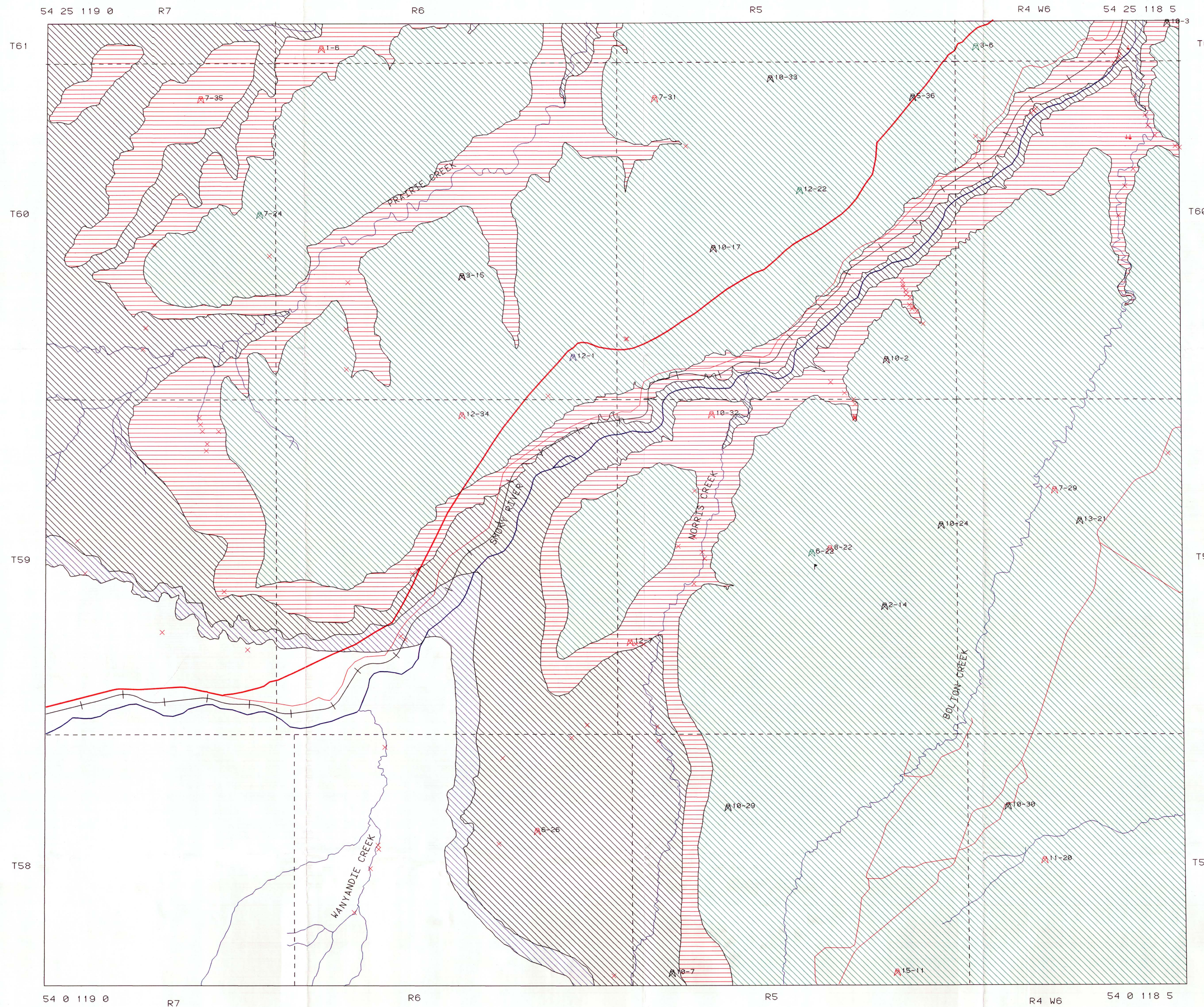


# REGIONAL COAL MAPPING - BOLTON CREEK NTS 83L/2

R J H RICHARDSON, W LANGENBERG, D C CHAO, F M DAWSON, D FIETZ

SCALE 1 50,000



1 50,000 SCALE

PASKAPOO FORMATION

COALSPUR FORMATION (UPPER)

COALSPUR FORMATION (LOWER)

BRAZEAU FORMATION (UPPER)

OIL & GAS LOCATION (ABANDONED)

OIL & GAS LOCATION (SUSPENDED)

OIL & GAS LOCATION (CAPPED)

OIL & GAS LOCATION (STANDING)

COAL OUTCROP

COAL TRENCH

DRILLHOLE, UNION OIL CO OF CAN LTD (COAL INTERSECTED)

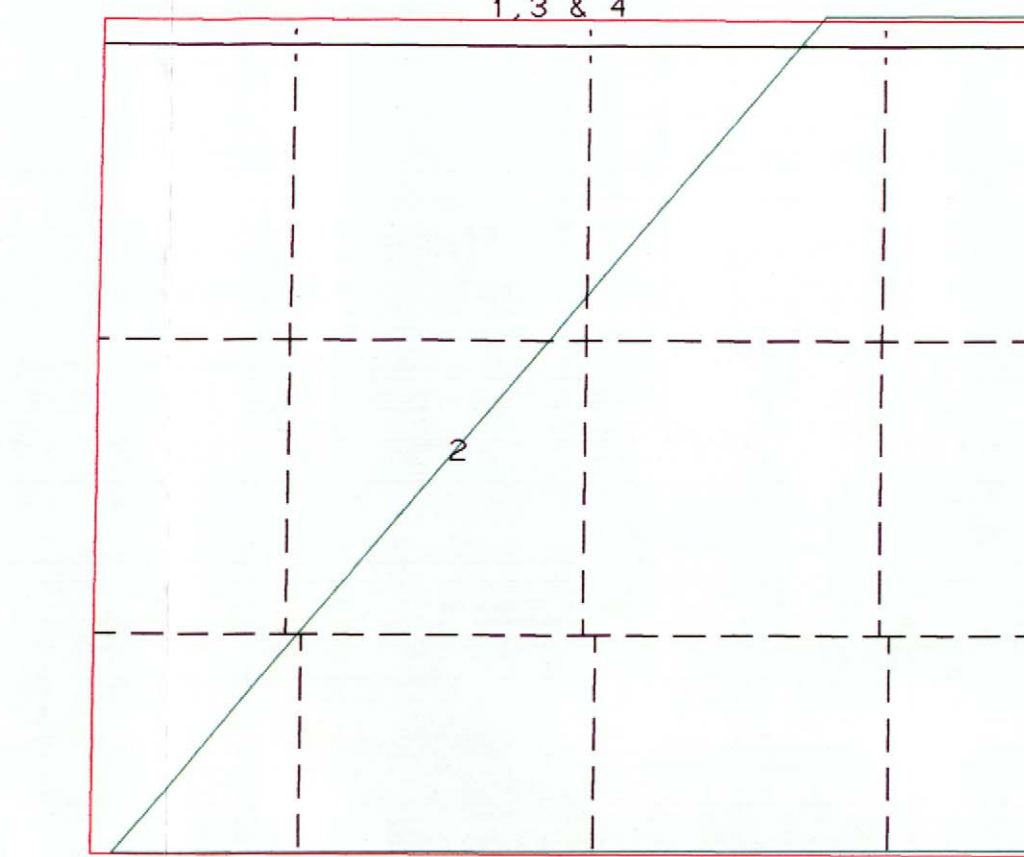
HIGHWAY 40

ROAD OR TRAIL

RIVER

RAILWAY

## REGIONAL COAL MAPPING - BOLTON CREEK NTS 83L/2 INDEX TO SPECIFIC REFERENCE DOCUMENTS 1, 3 & 4



### INDEX TO SPECIFIC REFERENCE DOCUMENTS for the MAPSHEET NTS 83L/2

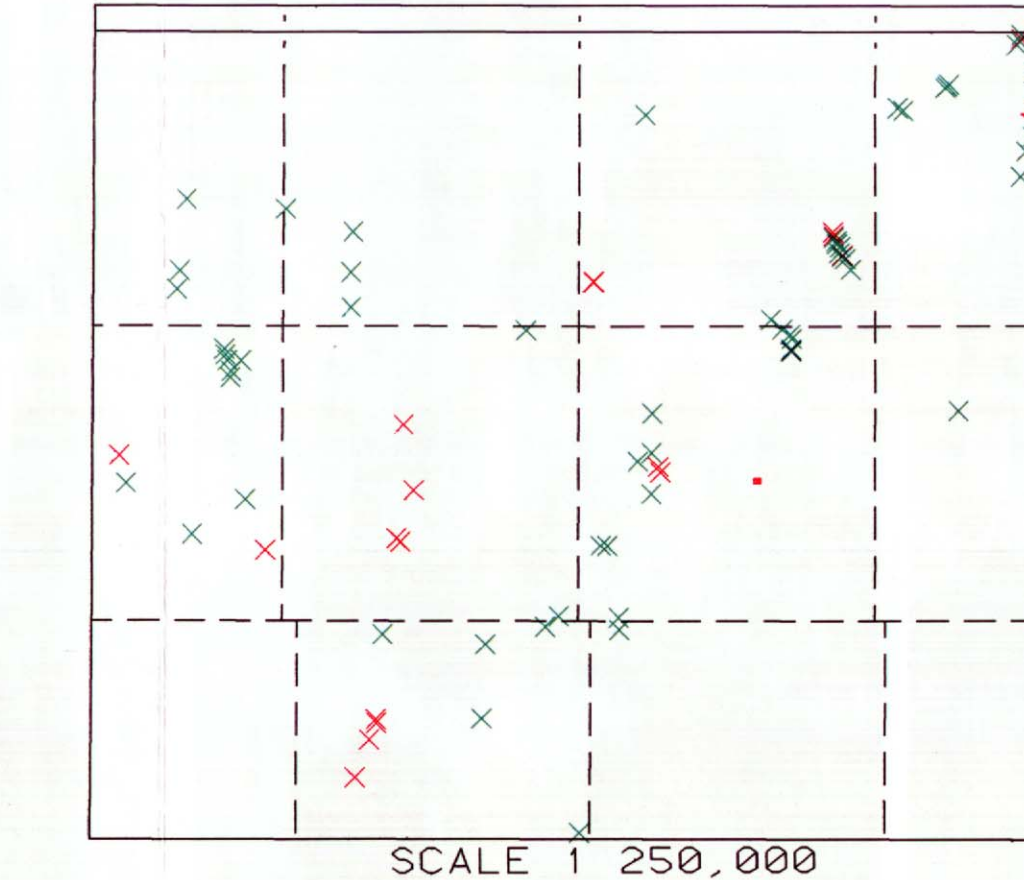
1. Blaney, S S. 1981-81. Map of South Project - Thermal Coal Reserve - Geological Evaluation Based on 1980 Field Mapping Program. Union Oil Company of Canada Limited. 4 Volumes. Report contains detailed regional geological maps. Scale 1:25,000. Outline identified as 1 on GIS plot.

2. Scudler, M A. 1982-83. Map of South Project - Thermal Coal Drill Program - Geological Evaluation. Union Oil Company of Canada Limited. 4 Volumes. Outline identified as 2 on GIS plot.

3. Iron Resources Canada Limited. 1980-80-1. Study. River Resources Area. Raw Data and Mapping Data Compilation - NTS 83L. Compilation includes numerous maps at scales of 1:50,000 and 1:50,000. Outline identified as 3 on GIS plot.

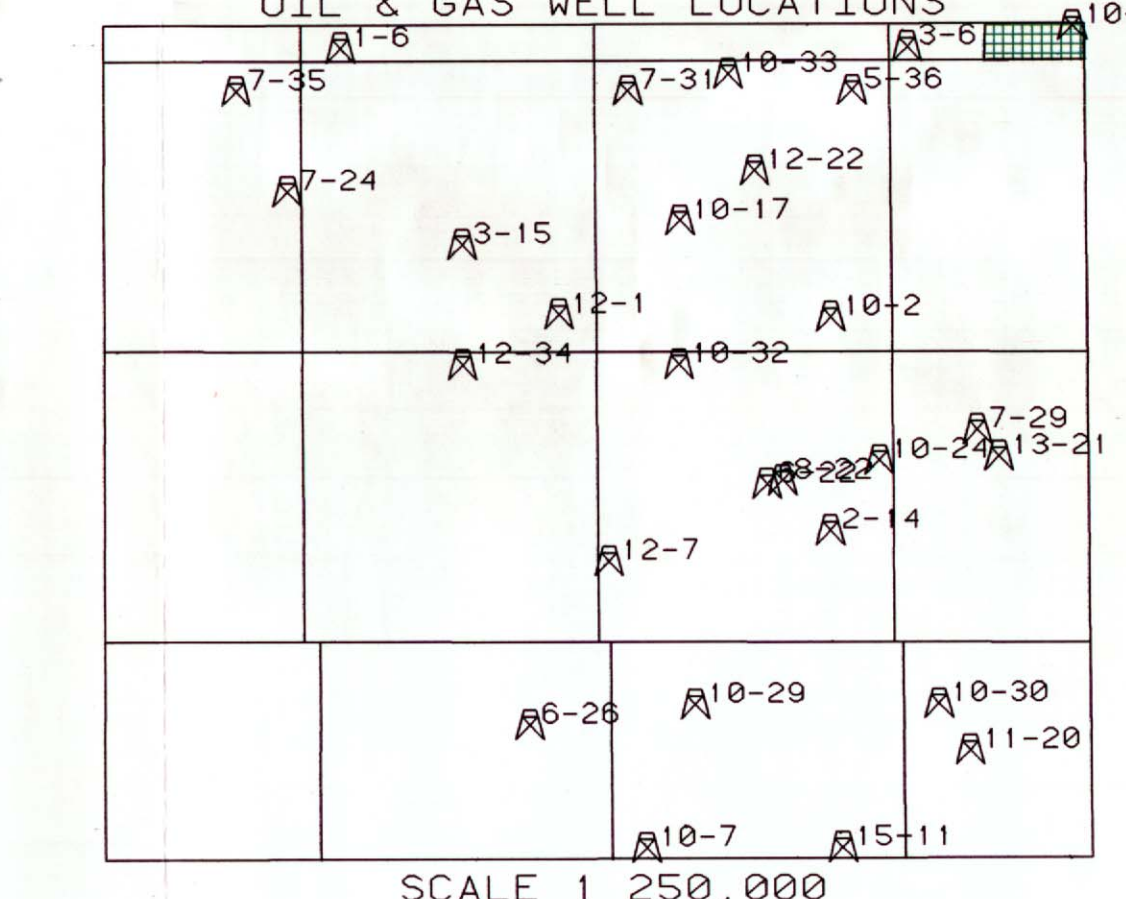
4. Richardson, R E & Dawson, F M. Geological Compilation - Map/Li Area (83L). Geological Survey of Canada. Open File Report 2313. Scale 1:125,000. Outline identified as 4 on GIS plot.

## COAL REGIONAL MAPPING - BOLTON CREEK NTS 83L/2 COAL EXPLORATION DATA INFORMATION



- COAL DRILLHOLE, WITH COAL QUALITY
- COAL TRENCH, WITH COAL QUALITY
- COAL OUTCROP, WITH COAL QUALITY
- COAL OUTCROP, NO COAL QUALITY

## REGIONAL COAL MAPPING - BOLTON CREEK NTS 83L/2 ERCB OIL & GAS FIELD OUTLINES AND OIL & GAS WELL LOCATIONS

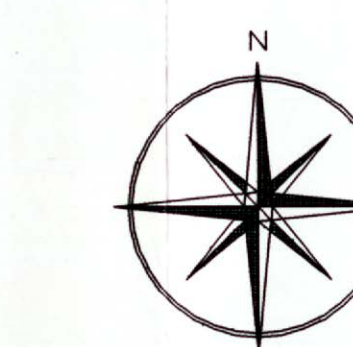


- KAKWA OIL FIELD
- OIL & GAS WELL LOCATION

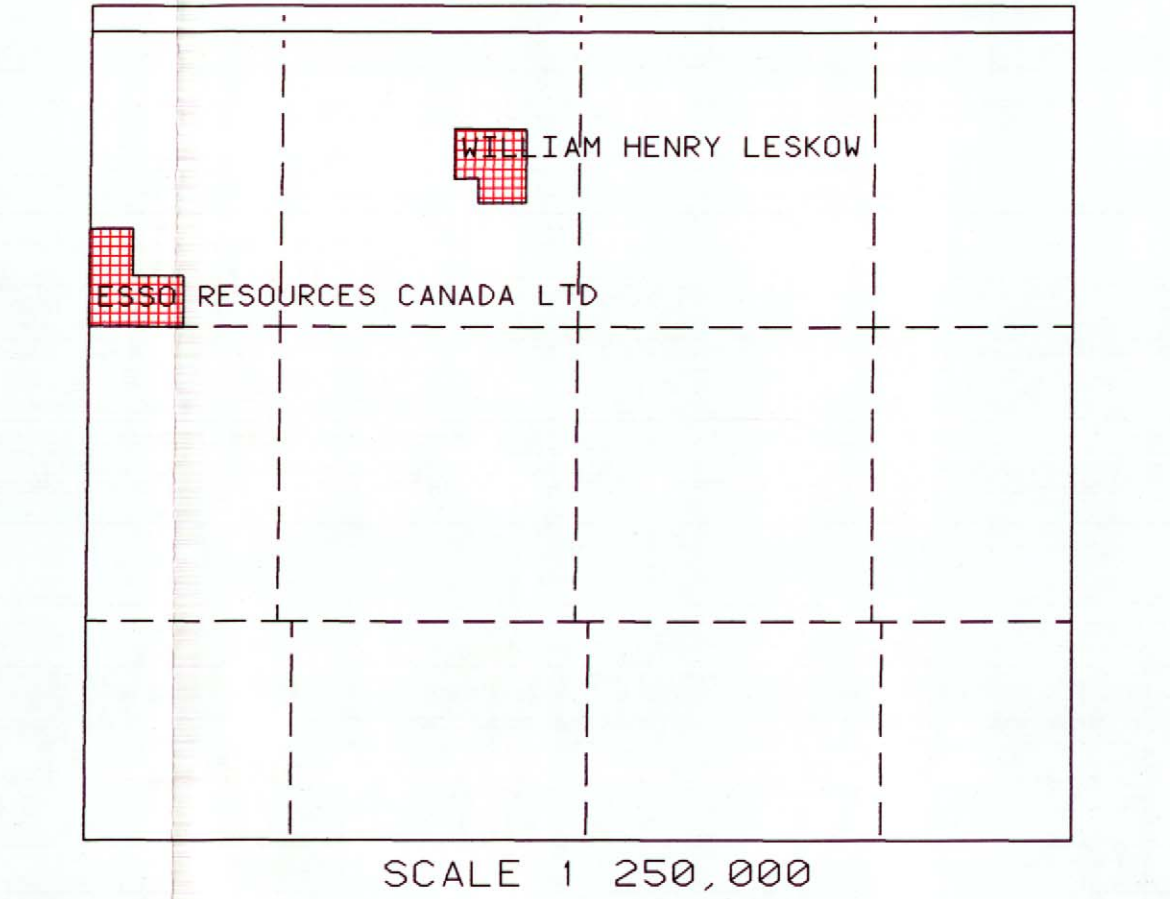
ALBERTA RESEARCH COUNCIL MAP RCMB  
IMAGE NAME 83L2p11  
COMPILATION DATE FEBRUARY, 1991  
REVISION DATE MAY 2, 1991

**RELIABILITY AND USE**  
Information contained on this map sheet has been derived from a number of different sources, scales, and formats (digital and hard copy). Every attempt has been made to accurately portray the data. However, this map is intended to provide a basic compilation and overview of coal resources. For more specific information, please contact the Head, Coal Geology Section, Alberta Research Council, P.O. Box 8538, St. John's, Edmonton, Alberta, T6H-5X2.

**FUNDING**  
Funds for this project have been provided by the Alberta Department of Energy and the Alberta Research Council.

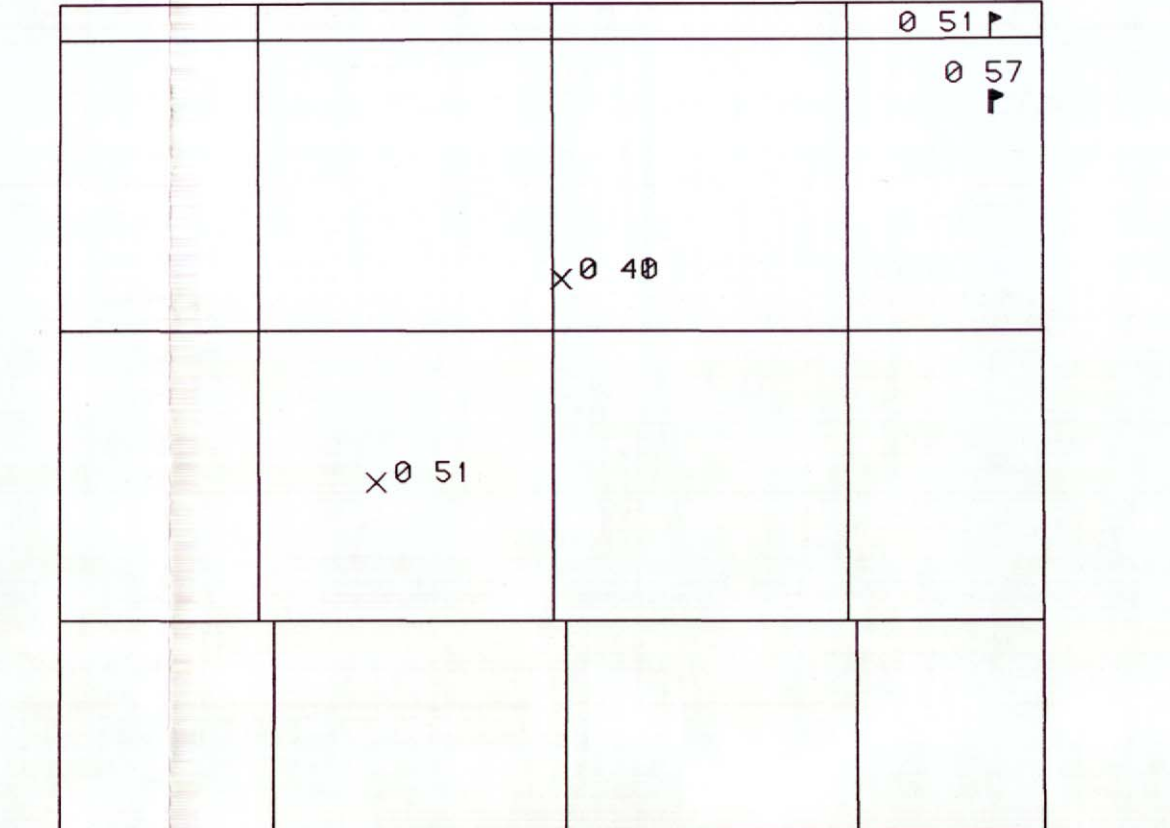


## REGIONAL COAL MAPPING - BOLTON CREEK NTS 83L/2 COAL DISPOSITIONS



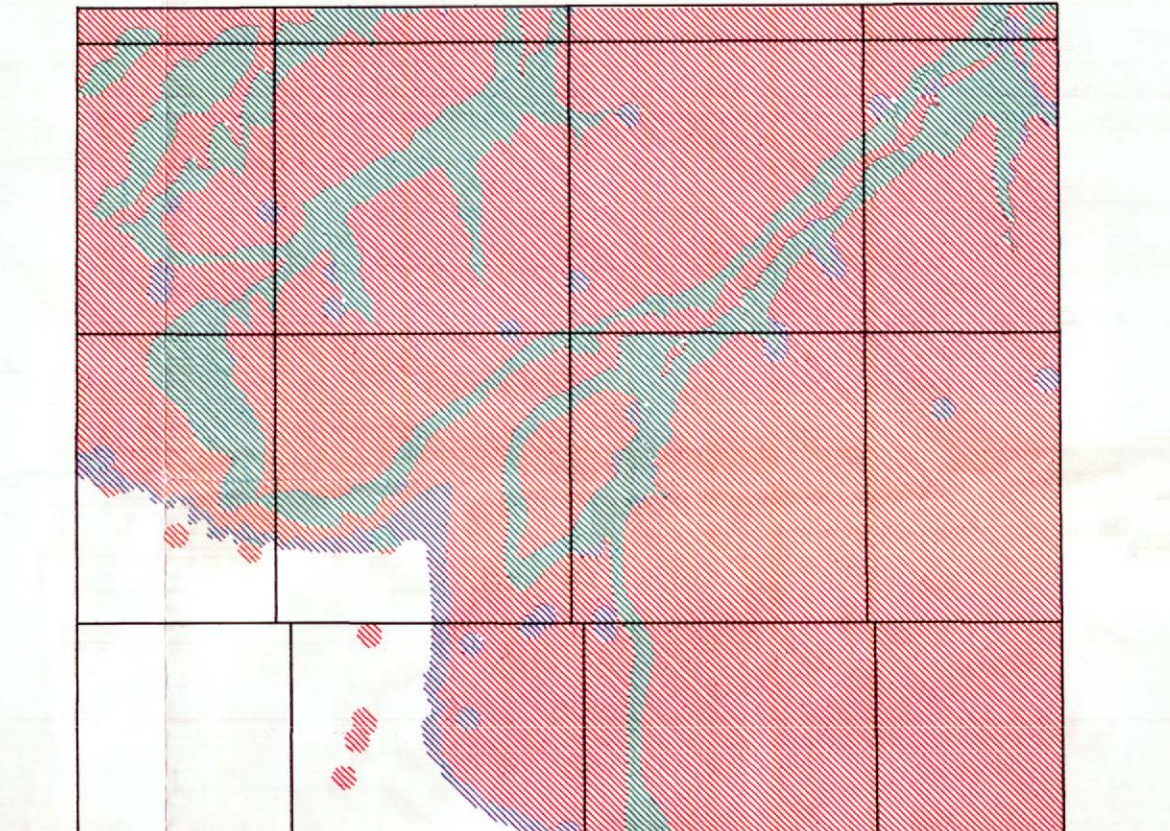
- COAL LEASE APPLICATION

## REGIONAL COAL MAPPING - BOLTON CREEK NTS 83L/2 RANDOM VITRINITE REFLECTANCE (X) FROM COAL OUTCROPS & TRENCHES



- RANDOM VITRINITE REFLECTANCE (X) COAL OUTCROP
- RANDOM VITRINITE REFLECTANCE (X) COAL TRENCH

## REGIONAL COAL MAPPING - BOLTON CREEK NTS 83L/2 COAL DEVELOPMENT POTENTIAL



- HIGH POTENTIAL
- MEDIUM POTENTIAL
- LOW POTENTIAL
- NO DATA AVAILABLE

**\* NOTE \***  
Coal Development Potential is a semi-quantitative and subjective evaluation of the potential of coal development based on limited data and reflecting current mining technology and general economic factors. CAUTION SHOULD BE EMPLOYED IN THE USE OF THIS ANALYSIS. The analysis is based on current geological criteria and does not take into account governmental restrictions on coal development or evaluate actual economic constraints to development. In the future, to establish a potential map for a narrow set of criteria, please contact the AGS.