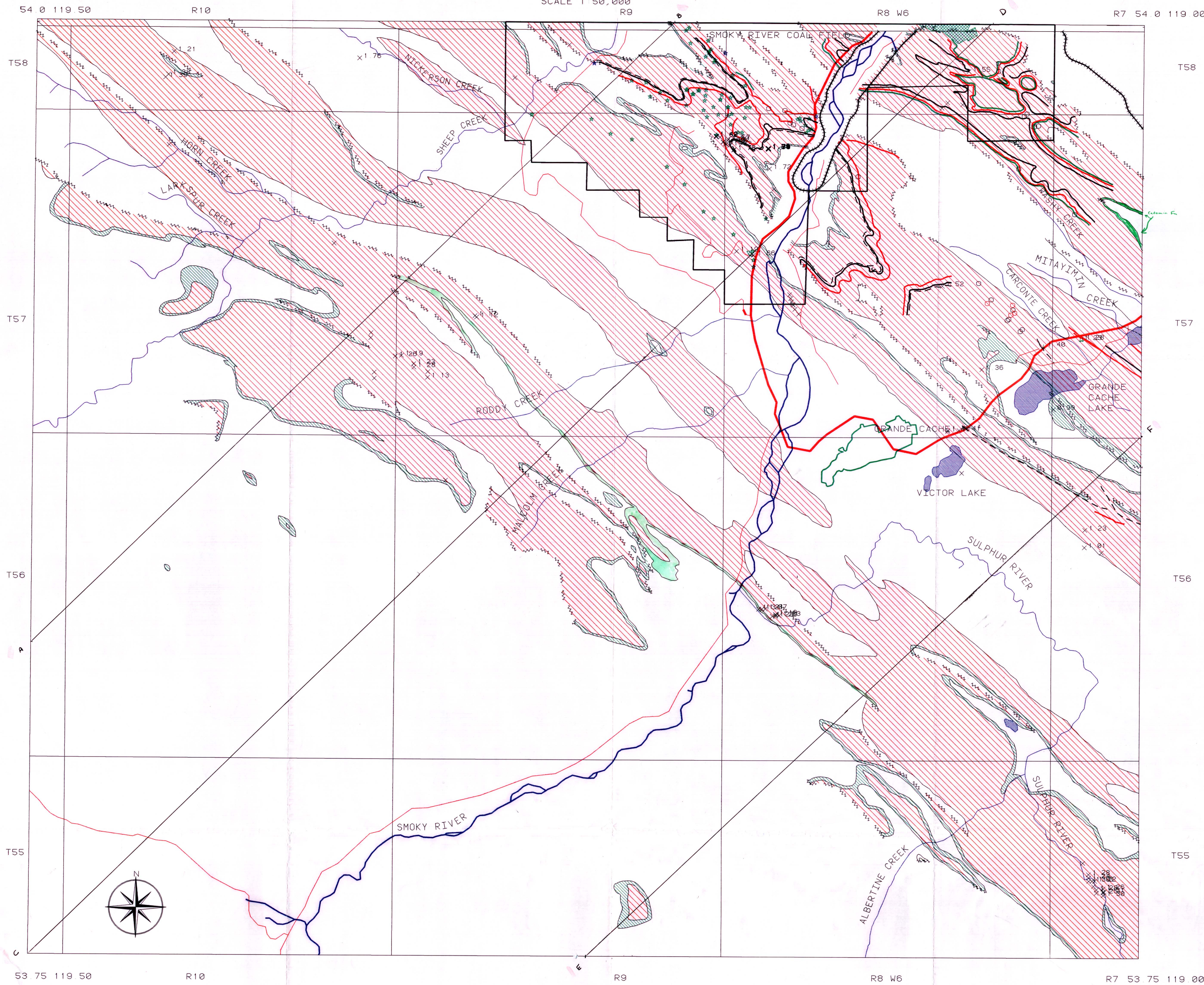


REGIONAL COAL MAPPING - GRANDE CACHE NTS 83E/14

R. J. H. RICHARDSON, W. LANGENBERG, D. K. CHAO, D. FIETZ

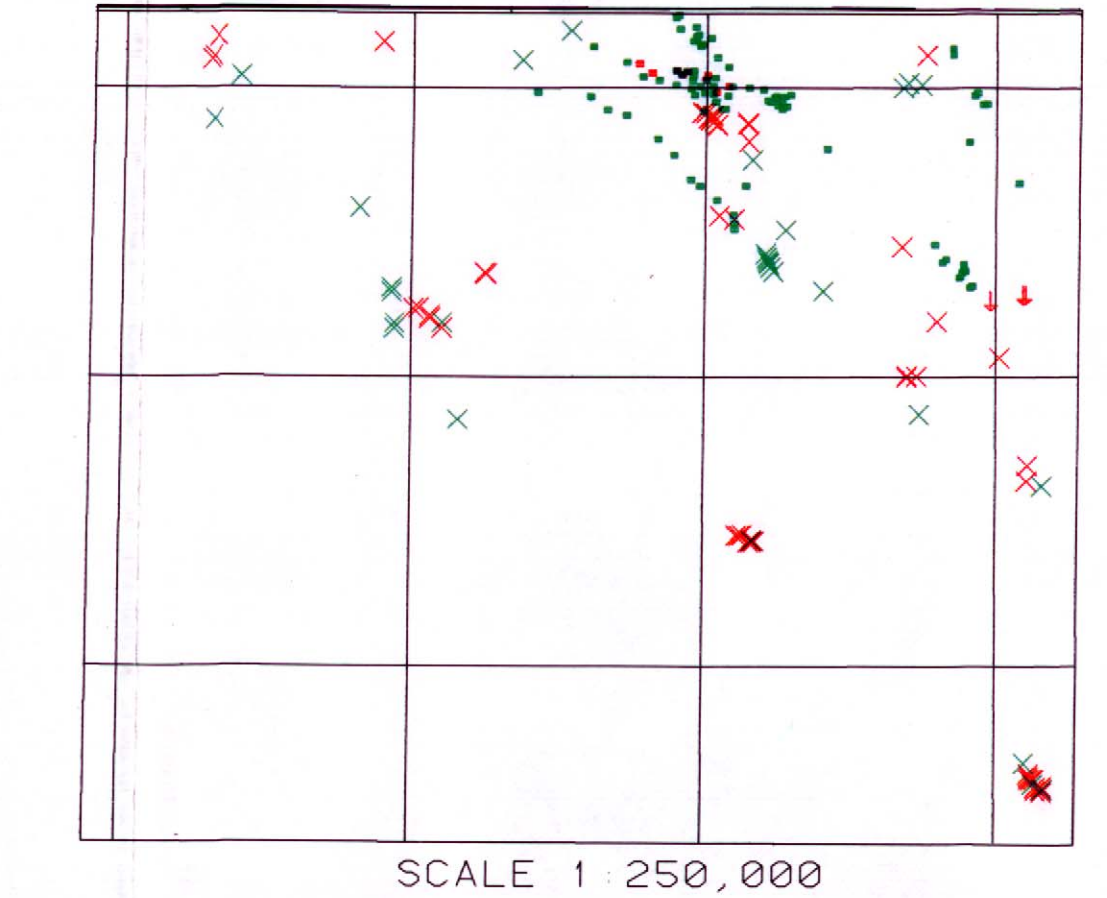
SCALE 1 50,000
R9



1:50,000 LEGEND

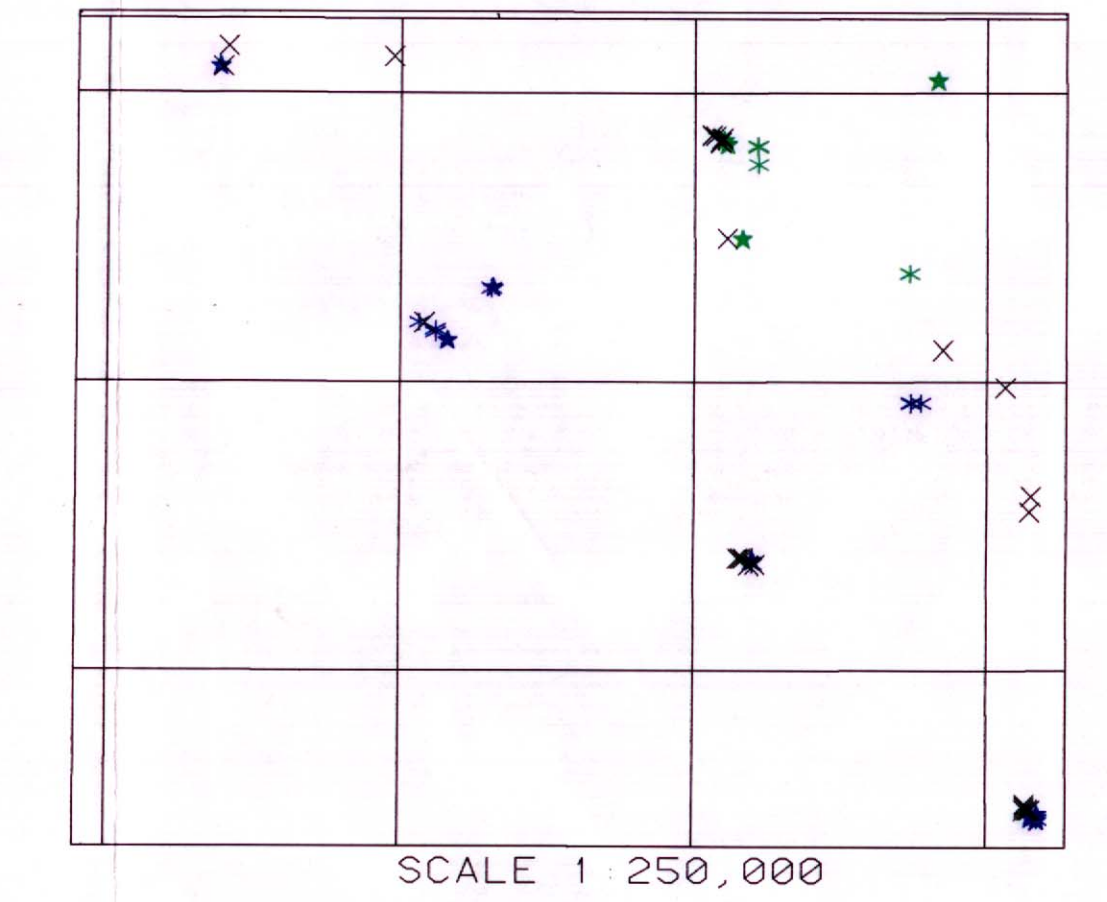
- | | | | | |
|--|--|--|--|--|
| | | | | |
| | | | | |
| | | | | |
| | | | | |
| | | | | |

REGIONAL COAL MAPPING - GRANDE CACHE NTS 83E/14 COAL EXPLORATION DATA INFORMATION



- COAL DRILLHOLE, WITH COAL QUALITY
- COAL DRILLHOLE, NO COAL QUALITY
- COAL OUTCROP, WITH COAL QUALITY
- COAL OUTCROP, NO COAL QUALITY
- TRENCH, WITH COAL QUALITY

REGIONAL COAL MAPPING - GRANDE CACHE NTS 83E/14 VITRINITE REFLECTANCE CLASSIFICATION



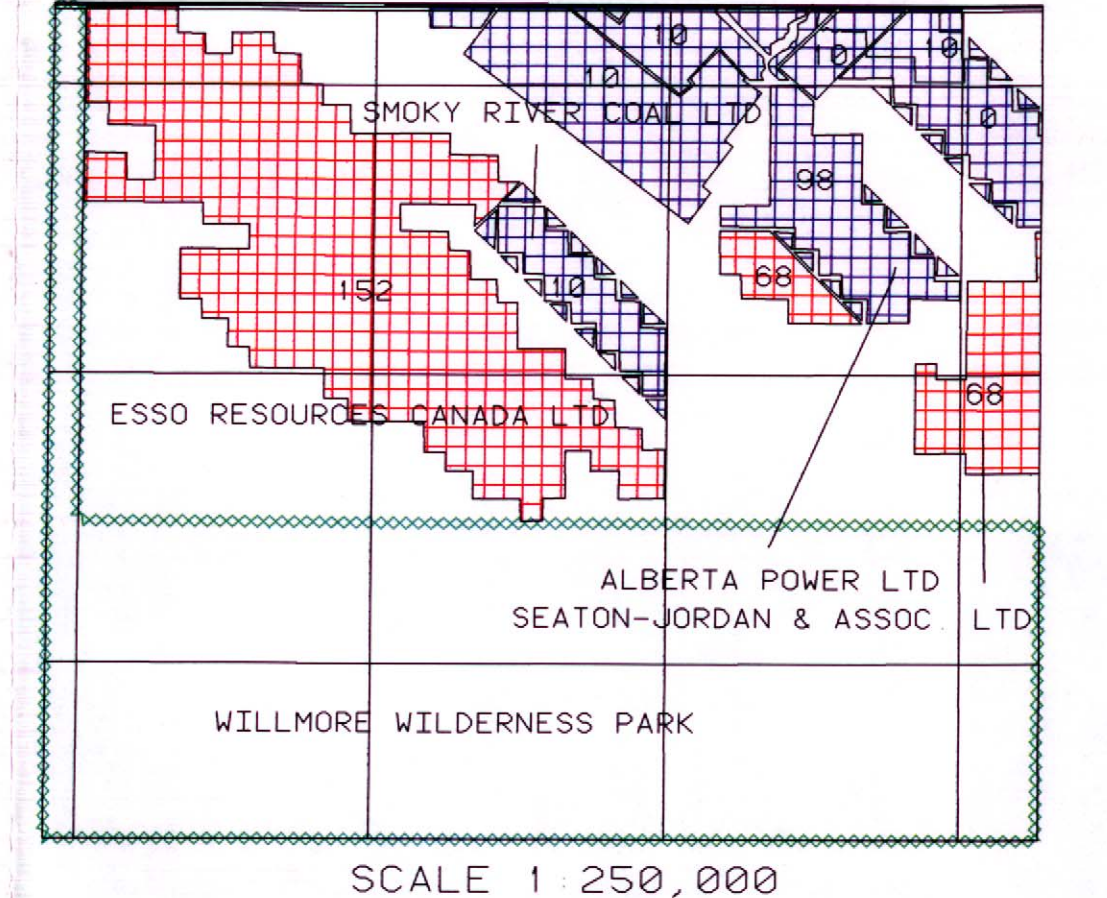
- MEDIUM-VOLATILE BITUMINOUS COAL SEAM 3
- HIGH-VOLATILE BITUMINOUS COAL SEAM 3
- MEDIUM-VOLATILE BITUMINOUS COAL SEAM 4
- HIGH-VOLATILE BITUMINOUS COAL SEAM 4
- MEDIUM-VOLATILE BITUMINOUS COAL SEAM 10
- HIGH-VOLATILE BITUMINOUS COAL SEAM 10
- OTHER SEAMS

ALBERTA RESEARCH COUNCIL MAP RCMS
IMAGE NAME 83E14p11
COMPILATION DATE MAY, 1990
REVISION DATE JULY 17, 1990

RELIABILITY AND USE
Information contained on this map sheet has been derived from a large number of different sources, scales, and formats (digital and hard copy). Every attempt has been made to accurately portray the data. However, this map is intended to provide a basic compilation and overview of Coal Resources. For more specific information needs please contact the Head, Coal Geology Section, Alberta Geological Survey, Alberta Research Council, P.O. Box 8338, Station 7, Edmonton, Alberta.

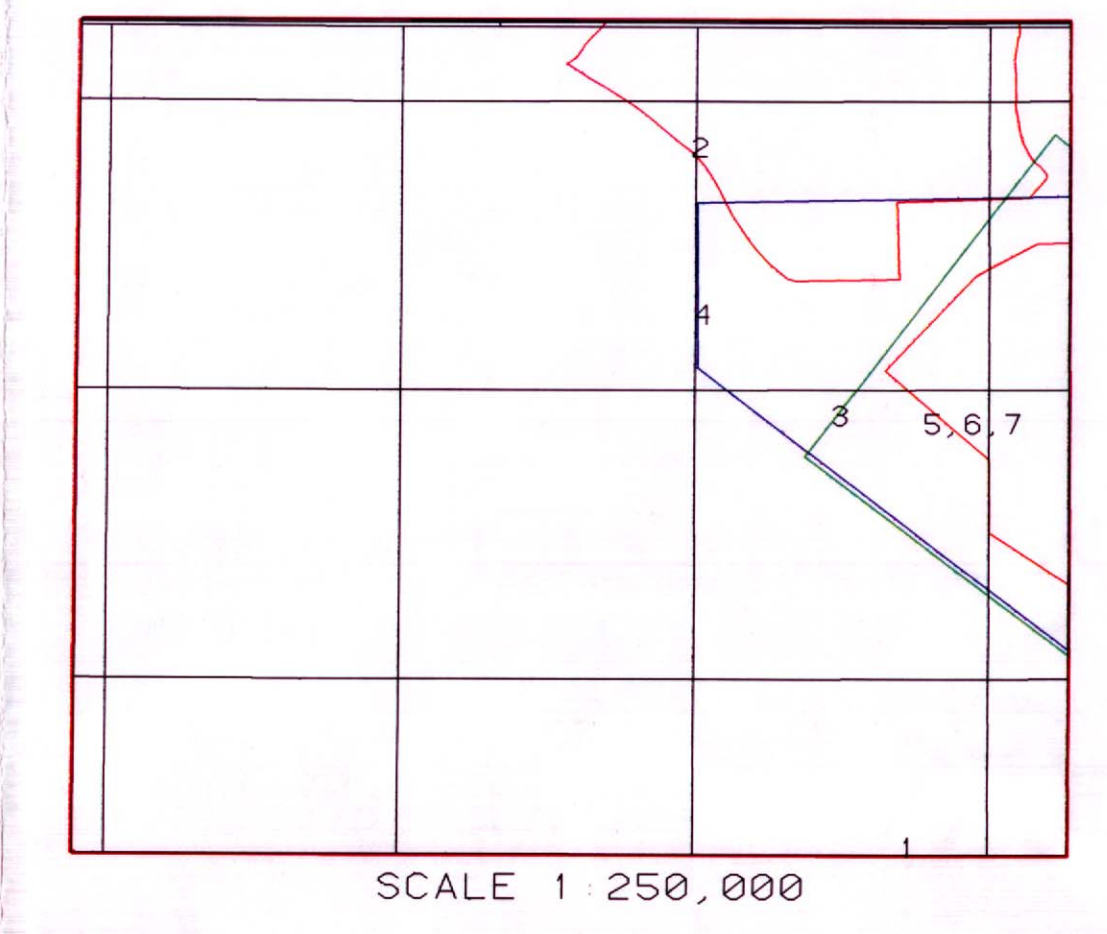
FUNDING
Funds for this project have been provided by the Alberta Office of Coal Research and Technology, Alberta Energy, and by the Alberta Research Council.

REGIONAL COAL MAPPING - GRANDE CACHE NTS 83E/14 COAL DISPOSITIONS



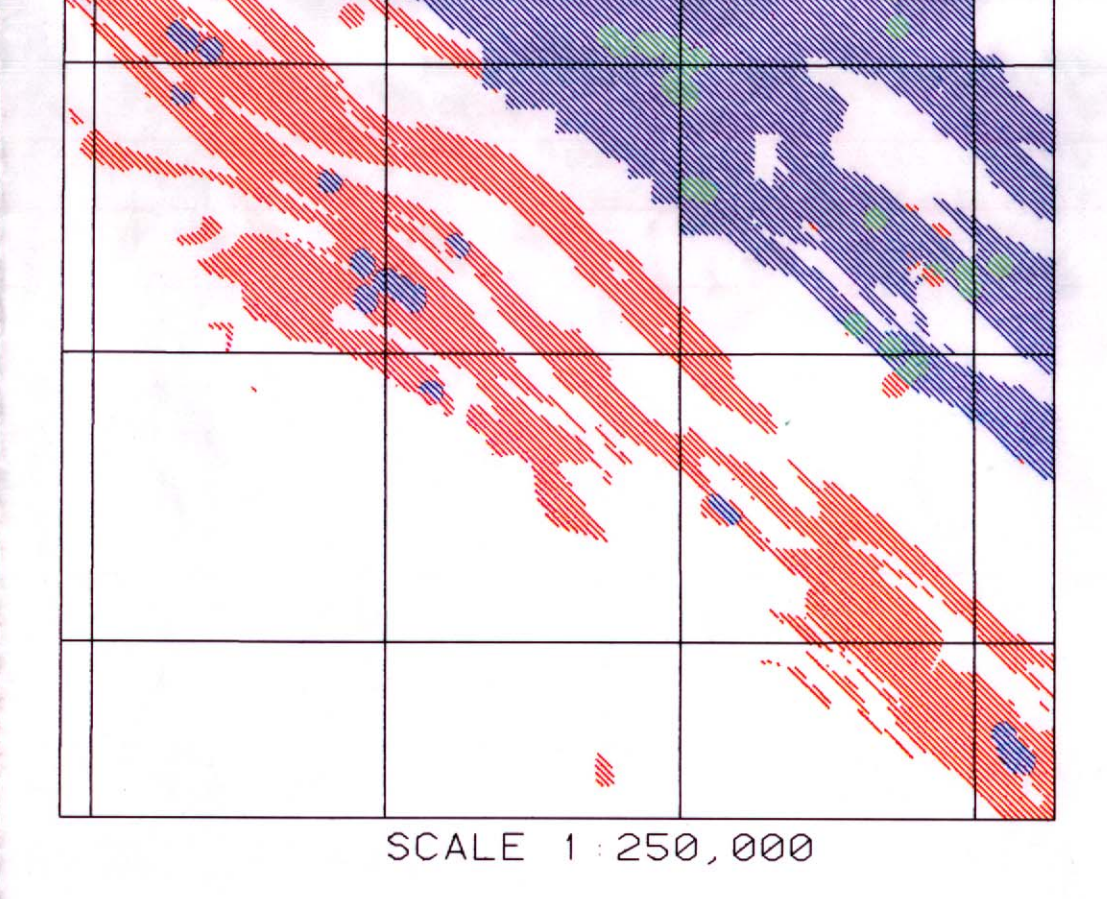
- COAL LEASE
- COAL LEASE APPLICATION

REGIONAL COAL MAPPING - GRANDE CACHE NTS 83E/14 INDEX TO SPECIFIC REFERENCE DOCUMENTS



- INDEX TO SPECIFIC DOCUMENTS for the MAPSHEET NTS 83E/14
- Frank, E. J. M. and Thorsen, R. 1987. Grande Cache east-south-east Geological Survey of Canada Map 1848A Scale 1:50,000. Outline identified as 1 on 625 plot.
 - Langenberg, C. W., Kalkreuth, W. and Whitham, C. B. 1987. Deformed Lower Cretaceous coal-bearing strata of the Grande Cache area, Alberta. Alberta Research Council - Alberta Geological Survey Bulletin No. 56. Report contains map "Geological Map Grande Cache Area, Alberta", scale 1:150,000.
 - "Cross Sections, Grande Cache Area, Alberta", scale 1:150,000. = map "Structure of Top of Number 4 Coal Seam, Grande Cache, Alberta, scale 1:300,000".
 - Bell, D. E. 1978. Coal Geological Map, Grande Cache, Alberta. Report prepared for Pacific Petroleum Ltd., Calgary, Alberta. Report contains 1988 regional geological map. Outline identified as 3 on 625 plot.
 - McDonald, K. 1981. West of 6th Project - Sterne Creek, Grande Cache Mountain and Grassy Creek Metallurgical Coal Prospects - Preliminary Geological Evaluation - 1980 Field Programme. Mining Department - Union Oil Company of Canada Limited. Outline identified as 4 on 625 plot.
 - David E. Pearson and Associates Ltd. Prepared for Union Oil Company of Canada Limited. 1982-12. Report on 1982 Program Sterne Creek Project 2 Values. Report contains 1:250,000 geological map. 137 coal outcrop points. Outline identified as 5 on 625 plot.
 - David E. Pearson and Associates Ltd. Prepared for Union Oil Company of Canada Limited. 1982-11. Petrography of Sterne Creek Trench Samples. Outline identified as 6 on 625 plot.
 - David E. Pearson and Associates Ltd. Prepared for Union Oil Company of Canada Limited. 1982-09. Reflectance Data for Sterne Creek Coals. Outline identified as 7 on 625 plot.
- Industry cooperation and support exemplified by sharing of knowledge, unpublished corporate reports in-kind to the Alberta Geological Survey.

REGIONAL COAL MAPPING - GRANDE CACHE NTS 83E/14 COAL DEVELOPMENT POTENTIAL



- HIGH POTENTIAL
- MEDIUM POTENTIAL
- LOW POTENTIAL
- NO DATA AVAILABLE

NOTE
Coal Development Potential is a semi-quantitative and subjective evaluation of the potential of coal development based on limited data and reflecting current mining technology and general economic factors. CAUTION SHOULD BE EMPLOYED IN THE USE OF THIS ANALYSIS. The analysis is based on mainly geological criteria and does not take into account governmental restrictions on coal development or available social economic constraints to development now or in the future. To establish a potential map for a unique set of criteria, please contact the AGS.

ALBERTA RESEARCH COUNCIL

COAL GEOLOGY SECTION
ALBERTA GEOLOGICAL SURVEY