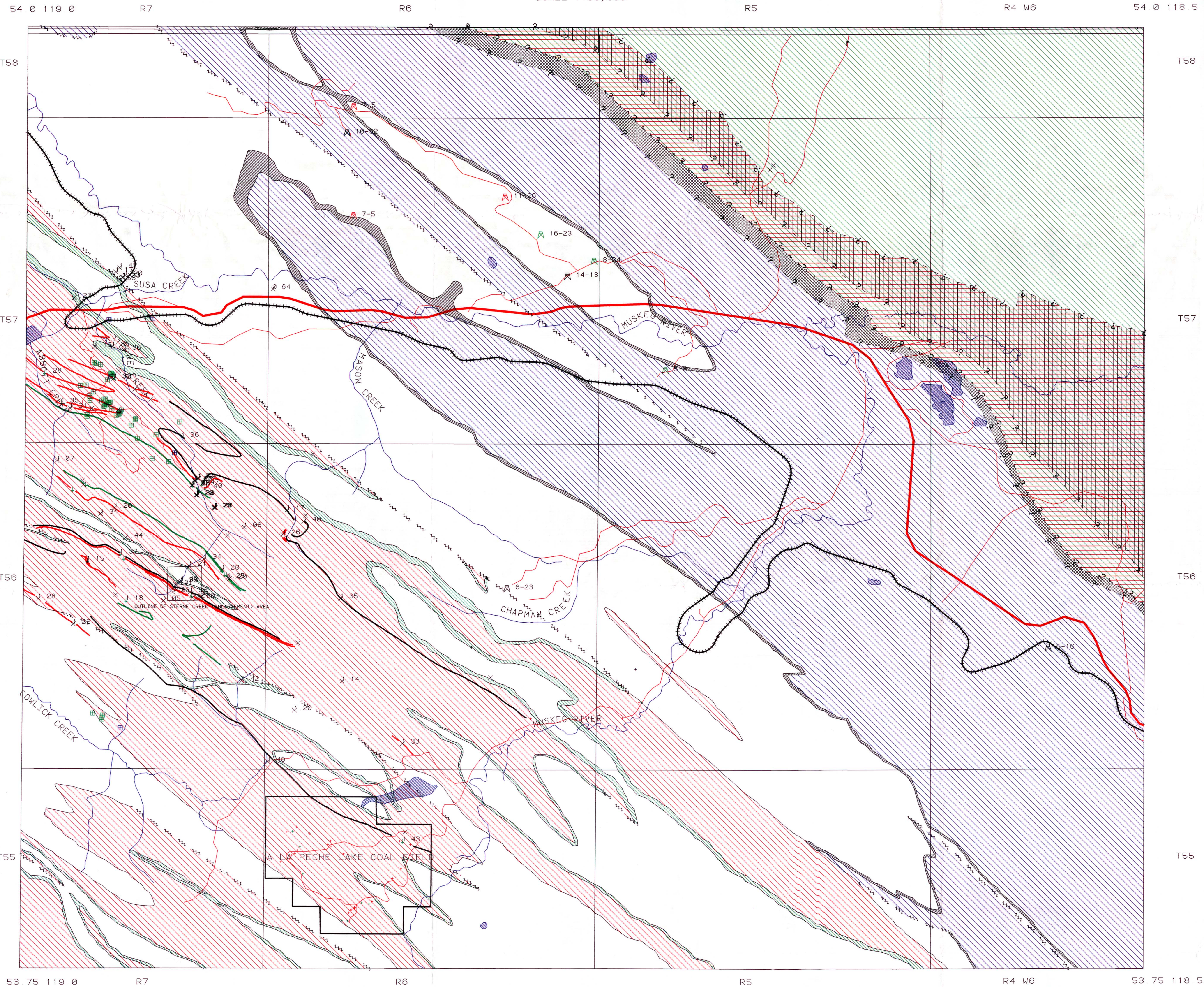


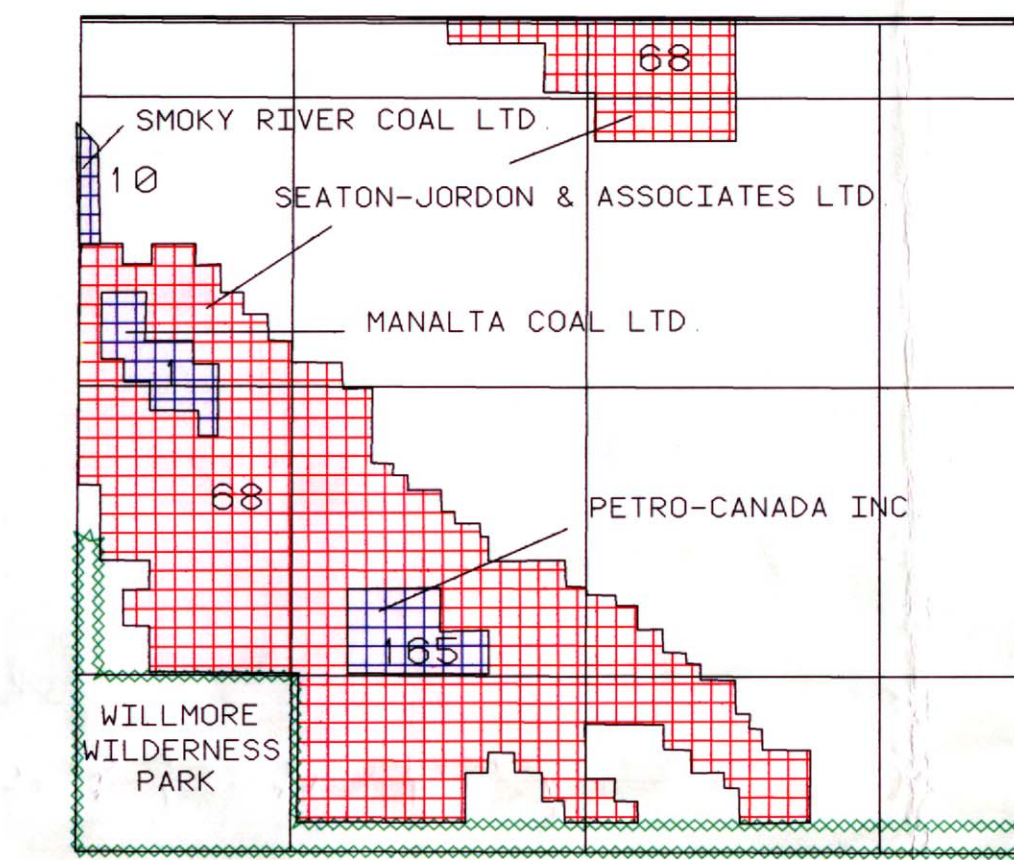
REGIONAL COAL MAPPING - PIERRE GREYS LAKES NTS 83E/15

R. J. H. RICHARDSON, W. LANGENBERG, D. K. CHAO, D. FIETZ

SCALE 1:50,000



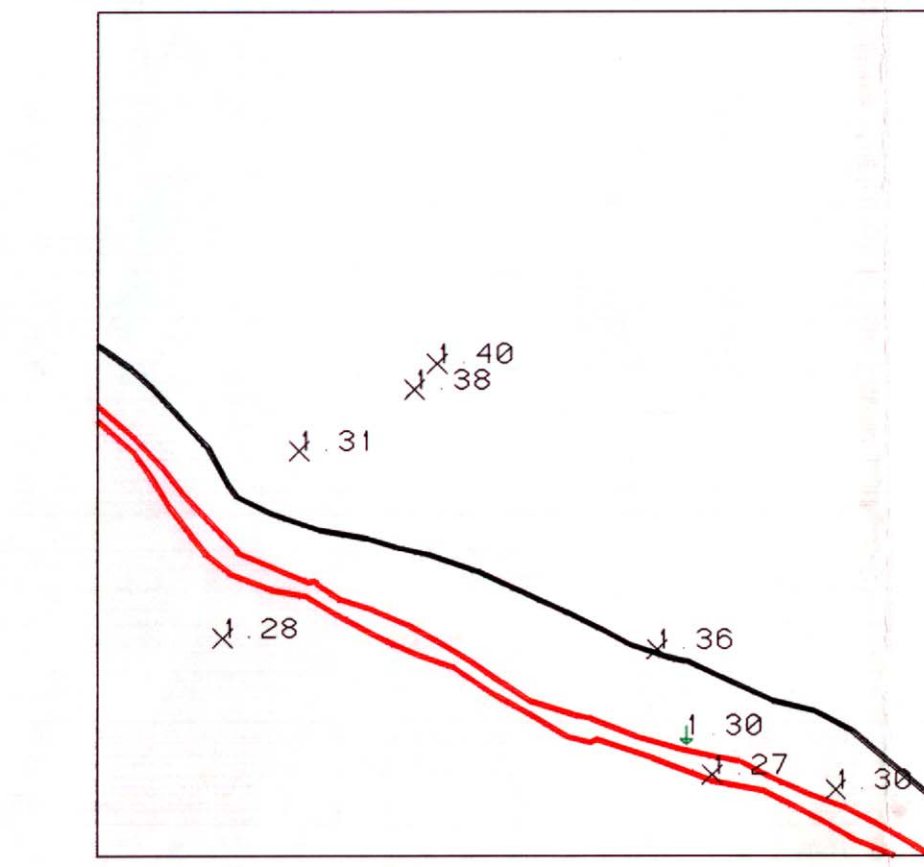
REGIONAL COAL MAPPING - PIERRE GREYS LAKES NTS 83E/15 COAL DISPOSITIONS



SCALE 1:250,000

- COAL LEASE
- COAL LEASE APPLICATION

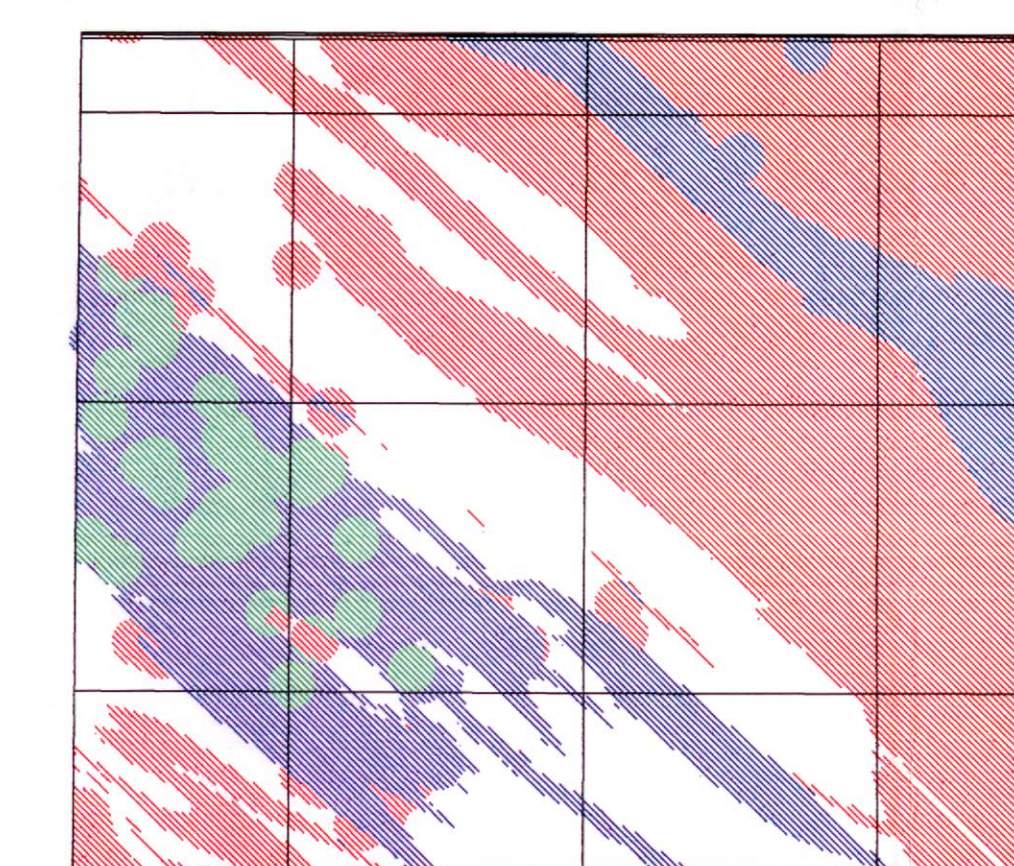
VITRINITE REFLECTANCE VALUES (X) ENLARGEMENT OF STERNE CREEK AREA



SCALE 1:9,000

Note: The above enlargement is included to demonstrate the flexibility of the system; emphasis can be placed on any aspect of the data in any area.

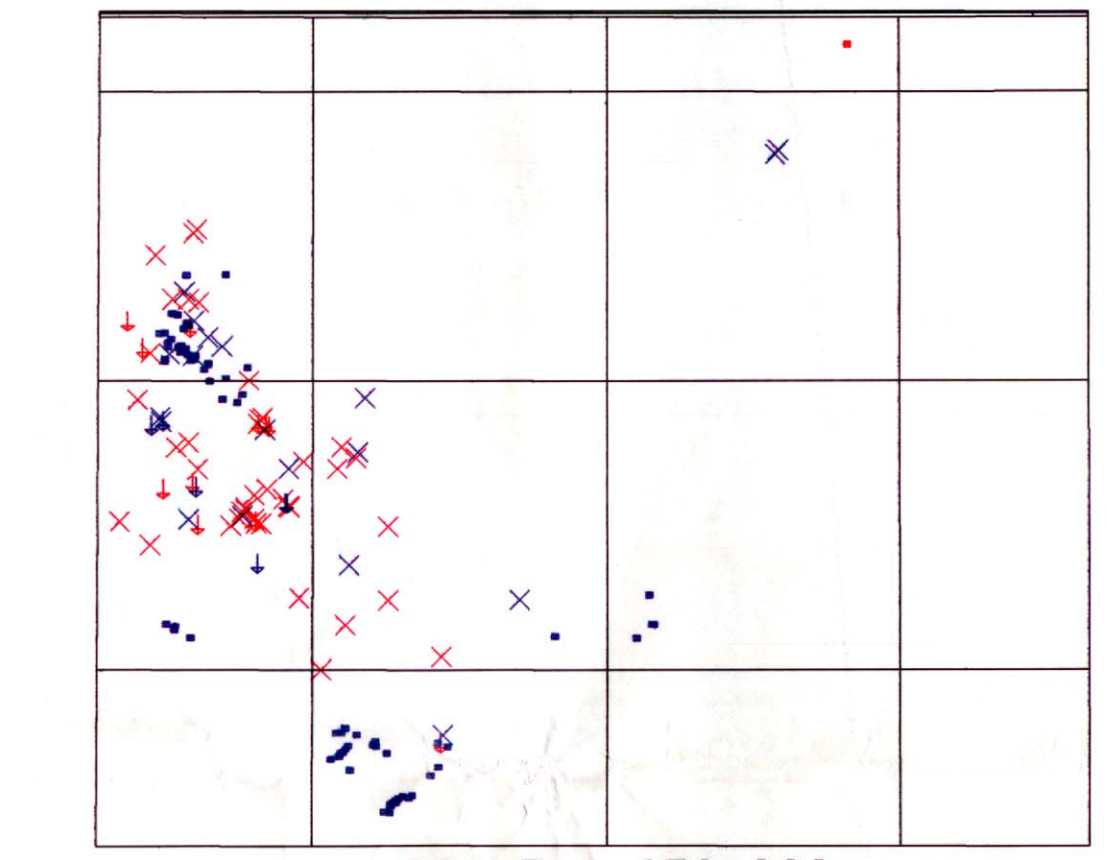
REGIONAL COAL MAPPING - PIERRE GREYS LAKES NTS 83E/15 COAL DEVELOPMENT POTENTIAL*



SCALE 1:250,000

- HIGH POTENTIAL
- MEDIUM POTENTIAL
- LOW POTENTIAL
- NO DATA AVAILABLE

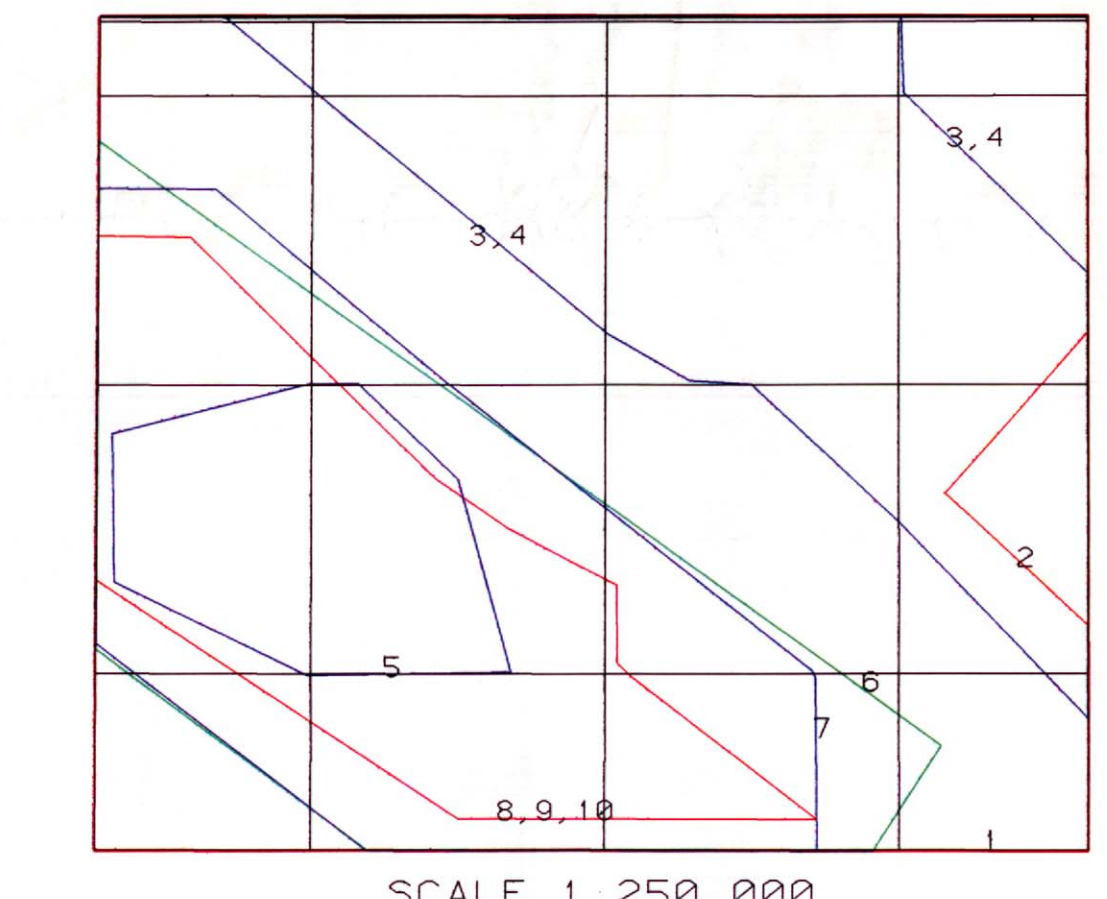
REGIONAL COAL MAPPING - PIERRE GREYS LAKES NTS 83E/15 COAL EXPLORATION DATA INFORMATION



SCALE 1:250,000

- COAL DRILLHOLE, WITH COAL QUALITY
- COAL DRILLHOLE, NO COAL QUALITY
- TRENCH, WITH COAL QUALITY
- TRENCH, NO COAL QUALITY
- COAL OUTCROP, WITH COAL QUALITY
- COAL OUTCROP, NO COAL QUALITY

REGIONAL COAL MAPPING - PIERRE GREYS LAKES NTS 83E/15 INDEX TO SPECIFIC REFERENCE DOCUMENTS



SCALE 1:250,000

- INDEX TO SPECIFIC REFERENCE DOCUMENTS for the MAPSHEET NTS 83E/15
- Long, A. H. and Irish, E. J. W. 1951 Pierre Greys Lakes regional Geological Survey of Canada Map 994. Scale 1:63,500. Outline identified on GIS plot.
 - Union Oil Company of Canada, 1980-10-30. Heat of Sixth Project. ESRB Coal Application No. 588572. Fiche Application from ESRB Records Center. Outline identified on GIS plot.
 - Blokesby, R. S. 1981-01. Heat of Sixth Project - Thermal Coal Assessment - Geological Evaluation Based on 1980 Field Mapping Program. Union Oil Company of Canada Limited. 4 Volumes. Report contains detailed regional geological maps. Scale 1:50,000. Outline identified on GIS plot.
 - Blakely, R. A. 1982-02. Heat of Sixth Project - Thermal Coal (1): Programmatic Geological Evaluation. Union Oil Company of Canada Limited. 4 Volumes. Outline identified on GIS plot.
 - Willson-Clegg, H. and Crabb, J. J. 1986-07-27. Report on Coal Properties - Smoky River Area, Alberta. Report prepared for Pacific Petroleum Ltd., Calgary, Alberta. Outline identified on GIS plot.
 - Beary, D. E. 1976. 1976 Coal Geological Study, Grande Cache, Alberta. Report prepared for Pacific Petroleum Ltd., Calgary, Alberta. Report contains 1:250,000 regional geological map. Outline identified on GIS plot.
 - McDonald, K. 1981-01. Heat of 6th Project - Sterne Creek, Grande Cache and Gravelly Creek Metallurgical Coal Properties - Preliminary Geological Evaluation - 1980 Field Programme. Mining Department - Union Oil Company of Canada Limited. Outline identified on GIS plot.
 - David E. Pearson and Associates Ltd. Prepared for Union Oil Company of Canada Limited. 1982-12. Report on 1982 Program Sterne Creek Project. 2 Volumes. Report contains 1:250,000 geological maps (3) and cross-sections (7). Outline identified on GIS plot.
 - David E. Pearson and Associates Ltd. Prepared for Union Oil Company of Canada Limited. 1982-11. Petrography of Sterne Creek Trench. Same as outline identified on GIS plot.
 - David E. Pearson and Associates Ltd. Prepared for Union Oil Company of Canada Limited. 1982-09. Reflectance Data for Sterne Creek Coals. Outline identified on GIS plot.

* Industry cooperation and support exemplified by sharing of knowledge, unpublished corporate reports and information to the Alberta Geological Survey.

1:50,000 LEGEND

- | | | | |
|--|--|--|--|
| | | | |
| | | | |
| | | | |
| | | | |
| | | | |
| | | | |
| | | | |

COMPILATION MARCH, 1990
 IMAGE NAME: GEOPLOT15
 DATE: MARCH 31, 1990
 ALBERTA RESEARCH MAP RCM2

RELIABILITY AND USE
 Information contained on this map sheet has been derived from a large number of different sources, scales, and formats (digital and hard copy). Every effort has been made to accurately portray the data; however, this map is intended to provide a basic compilation and overview of coal resources. For more specific information, please contact the Head, Coal Geology Section, Alberta Geological Survey, Alberta Research Council, P.O. Box 8338, Station F., Edmonton, Alberta.

FUNDING
 Funds for this project have been provided by the Alberta Office of Coal Research and Technology, Alberta Energy and by the Alberta Research Council.

