

PRECAMBRIAN\*

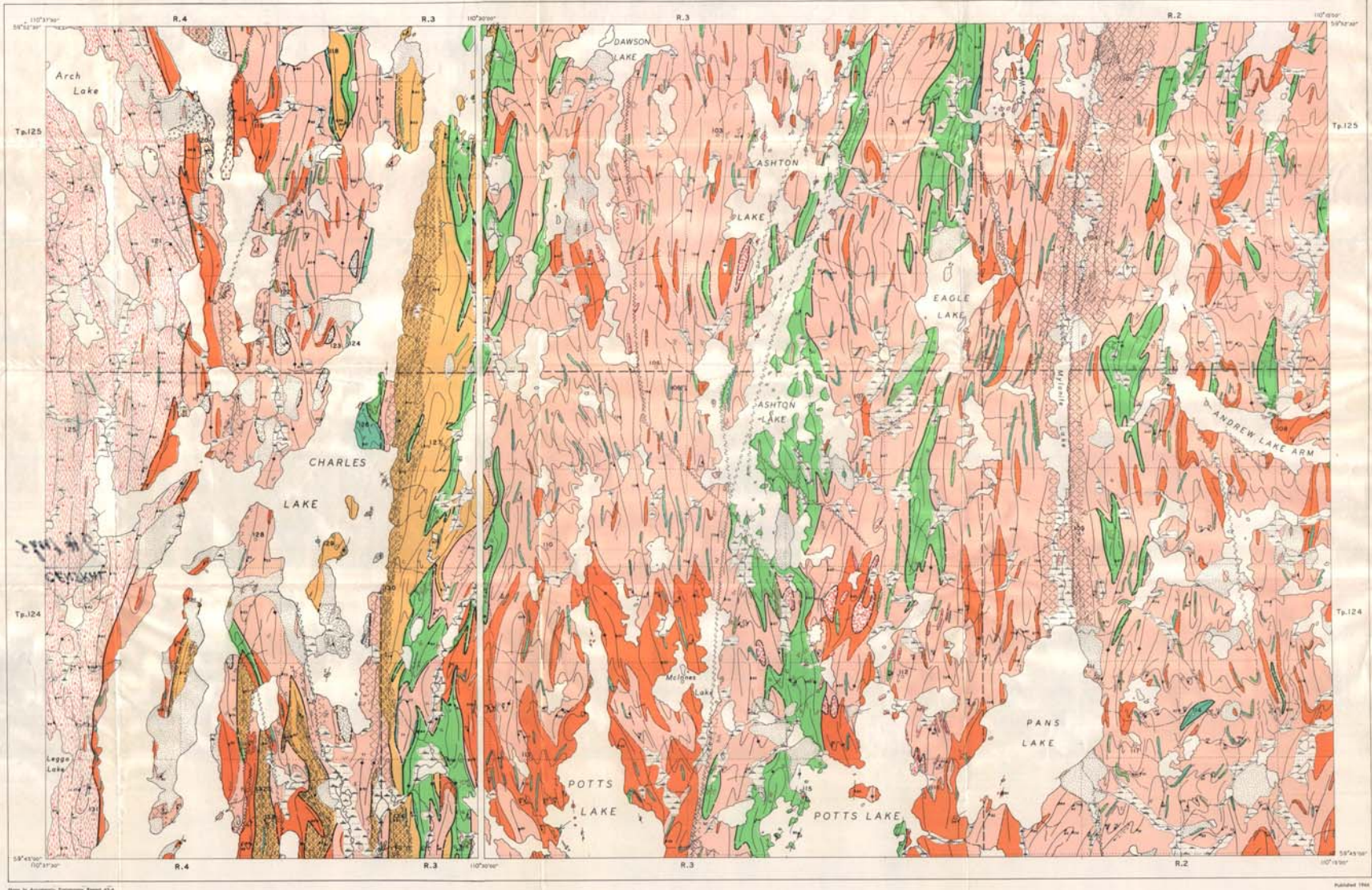
- LEGEND**
- Quartzite, pure and impure, white, gray, green, pink and blue, including feldspar, mica, minor mafic spots, talciferous, quartz, and porphyroblastic, hornblende and garnetiferous zones.
  - Basalt, white, with abundant quartz, some anorthic including glaucophane, epidote, quartz; minor mafic spots, talciferous, quartz, and porphyroblastic, hornblende and garnetiferous zones.
  - Basalt, green, F, with white to gray, including talciferous, quartz, and porphyroblastic, hornblende and garnetiferous zones.
  - Basalt, green, quartz, with some hornblende, chlorite, sericite, talciferous, quartz, and porphyroblastic, hornblende and garnetiferous zones.
  - Hornblende, quartz, with some feldspar, chlorite, sericite, talciferous, quartz, and porphyroblastic, hornblende and garnetiferous zones.
  - Amphibolite, including basic amphibolite, hornblende, mainly massive, but locally foliated, with light gray.
  - Basalt, V, quartz, with white to pink to red, including talciferous, quartz, and porphyroblastic, hornblende and garnetiferous zones.
  - Arch Lake quartz, with white to pink to red, including talciferous, quartz, and porphyroblastic, hornblende and garnetiferous zones.
  - Laminar quartz, with pink to red, including talciferous, quartz, and porphyroblastic, hornblende and garnetiferous zones.
  - Granite, coarse, basic, and monzonitic, with quartz, some hornblende, and porphyroblastic, hornblende and garnetiferous zones.
  - One hornblende, quartz, with light gray, including talciferous, quartz, and porphyroblastic, hornblende and garnetiferous zones.
  - Reverend quartzite, light colored, with some white to pink, including talciferous, quartz, and porphyroblastic, hornblende and garnetiferous zones.
  - Reverend quartzite, light colored, with white to pink, including talciferous, quartz, and porphyroblastic, hornblende and garnetiferous zones.
  - Reverend quartzite, pink, including talciferous, quartz, and porphyroblastic, hornblende and garnetiferous zones.



This map compiled from documents sheets T4150W and T4152E, published by Government of Alberta, Department of Lands and Forests, Edmonton.

Air photographs covering this area are obtainable from the Technical Division, Department of Lands and Forests, Government of Alberta, Edmonton, and the National Air Photographic Library, Transportation Survey, Ottawa.

Approximate magnetic declination 25° 40' East in 1955, decreasing 1' annually.



MAP 65-6D  
**CHARLES LAKE, CENTRAL**  
WEST OF FOURTH MERIDIAN  
Scale: Two inches to One Mile

MAP 65-6C  
**ASHTON LAKE DISTRICT**  
WEST OF FOURTH MERIDIAN  
Scale: Two inches to One Mile