

FEATURES LEGEND

Site investigated	△
Drillhole	○
Deposit Type	
clean	GRAVEL (Red), sandy GRAVEL (Orange), gravelly SAND (Light Green), SAND (Blue)
dirty/very dirty	(Pink), (Yellow), (Light Green), (Cyan)
unknown	(Light Pink), (Yellow), (Light Green), (Light Blue)
UNKNOWN deposit type	(Grey)

Deposit Type Definitions:

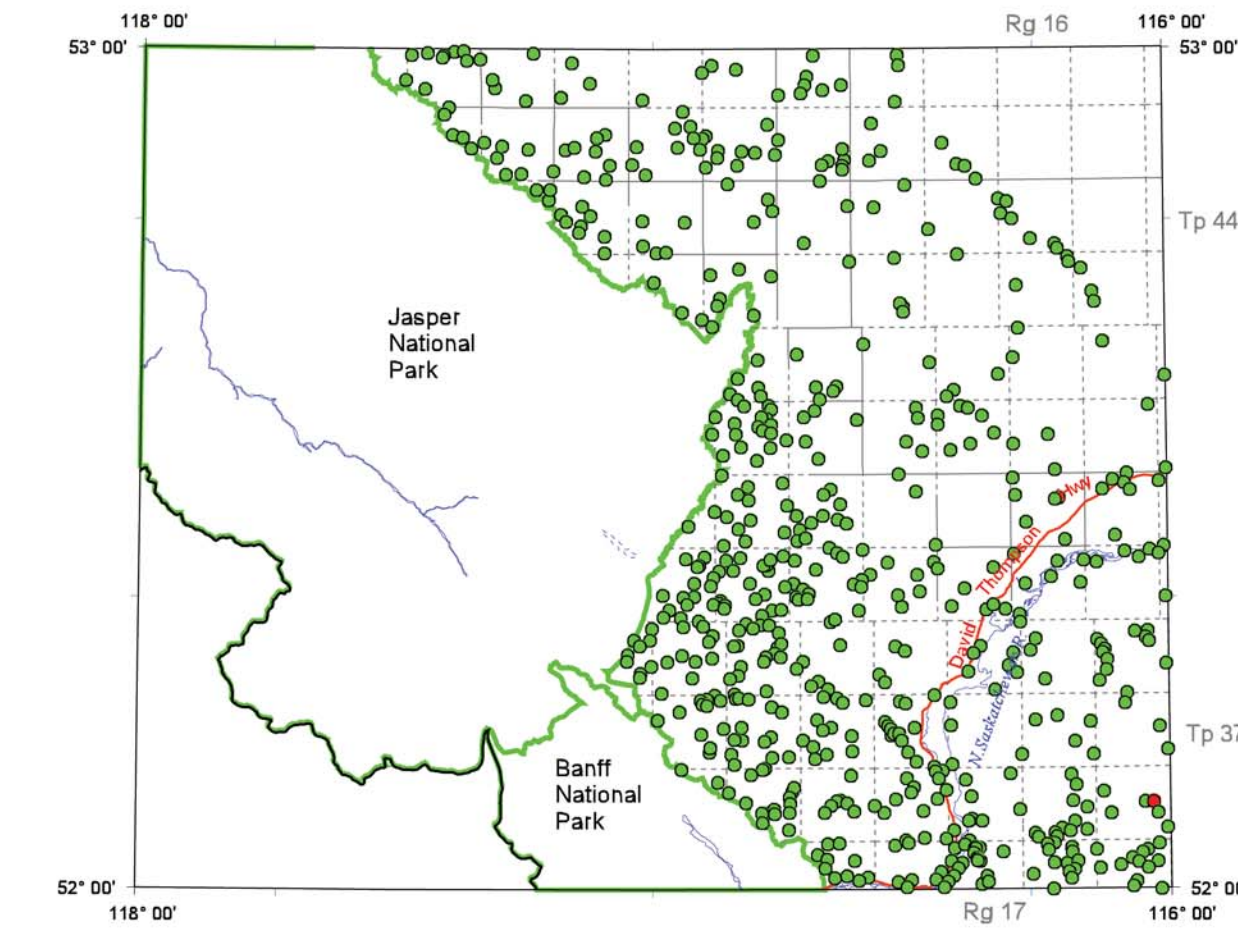
GRAVEL deposit: contains greater than 75% gravel.
 sandy GRAVEL deposit: contains 50% to 75% gravel.
 gravelly SAND deposit: contains 25% to 50% gravel.
 SAND deposit: contains less than 25% gravel.
 UNKNOWN deposit: amount of gravel unknown.
 clean deposit: contains less than 3% silt and clay.
 dirty deposit: contains 3% to 10% silt and clay.
 very dirty deposit: contains greater than 10% silt and clay.
 unknown: contains unknown percentage of mixed silt and clay.

BASE MAP LEGEND

River and lake	(Blue line)
River - intermittent	(Dashed blue line)
Road - paved	(Red line)
Road - gravel	(Orange line)
Road - unimproved	(Dashed orange line)
Railway line	(Black line with cross-ticks)
Trail	(Dashed black line)
Park boundary - provincial/national	(Green line with inward ticks)
City/town	(Black outline)
Metis settlement	(Purple outline)
Indian reserve	(Red outline)
Township/range - surveyed	(Dashed black line)
Township/range - unsurveyed	(Dotted black line)
UTM, zone 11 grid	(+ 450000m.E)

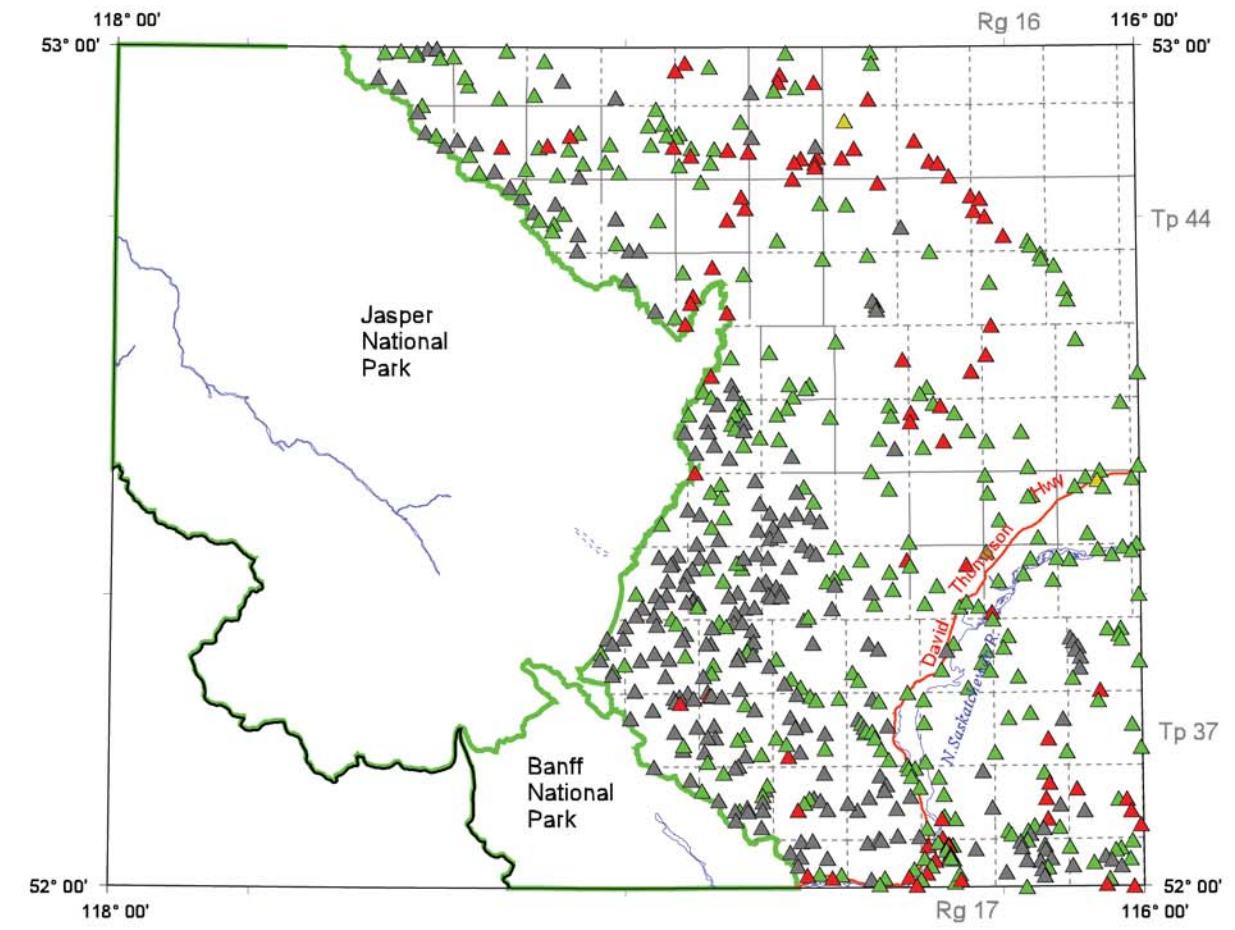
This is a common map legend. Not all units may be present on this map.

Study Level



● Level 1 ● Level 2 ● Level 3 ● Level 4 ● Level 5

Genesis or Geological Feature



▲ Preglacial ▲ Alluvial ▲ Glacial ▲ Unknown
 ▲ Glaciofluvial ▲ Eolian ▲ Other (includes talus)

Study Level Definitions:

Level 1 Aggregate reserves confirmed by grid testing and sampling
 Level 2 Aggregate reserves confirmed by multiple test holes and sampling
 Level 3 Sand and/or gravel confirmed by Alberta Geological Survey site investigation and limited sampling and testing
 Level 4 Sand and/or gravel areas assumed by Alberta Geological Survey investigation of associated sites, remote sensing and other sources of information
 Level 5 Potential sand and/or gravel areas identified from remote sensing and other sources of information without Alberta Geological Survey site investigation.

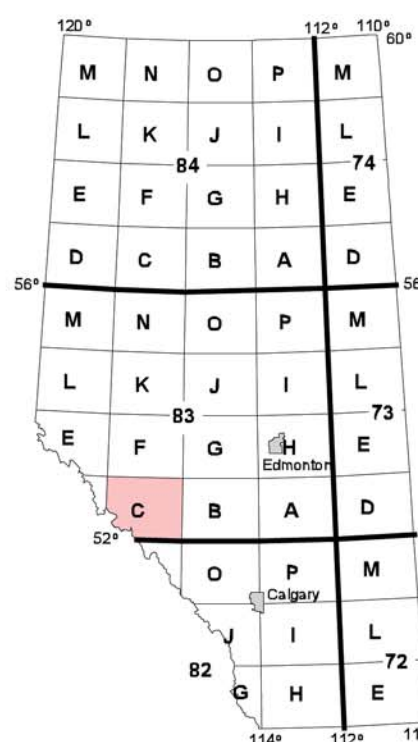
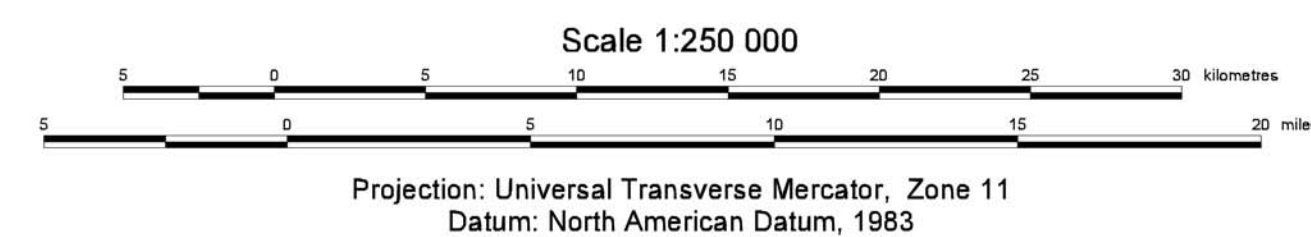
References:

Bayrock, L.A. and Reimchen, T.H.F. (1980): Surficial geology of the Alberta Foothills and Rocky Mountains, NTS 83L, NTS 83F, NTS 83B, NTS 82O, NTS 82J, NTS 82G, NTS 82H; Alberta Research Council, Alberta Geological Survey, Map 150, scale 1:250 000.

Published 2006
 Copies of this map may be obtained from:
 Information Sales
 Alberta Geological Survey
 Telephone: (780) 422-3767
 Website: www.ag.srv.ab.ca

Map 323
Sand and Gravel Deposits with Aggregate Potential
Brazeau, Alberta (NTS 83C)

Geology compiled by: W.A.D. Edwards, H.D. Budney



Acknowledgement:

GIS/Data Base/ Cartography by:
 M.C. Price, J. Weiss, D.K. Chao and Z.A. Amer.
 Digital base map provided by:
 Spatial Data Warehouse.

Disclaimer:

The Alberta Geological Survey and its employees and contractors make no warranty, guarantee or representation, express or implied, or assume any legal liability regarding the correctness, accuracy, completeness, or reliability of this publication. When using information from this publication in other publications or presentations, due acknowledgement should be given to the Alberta Energy and Utilities Board/Alberta Geological Survey.