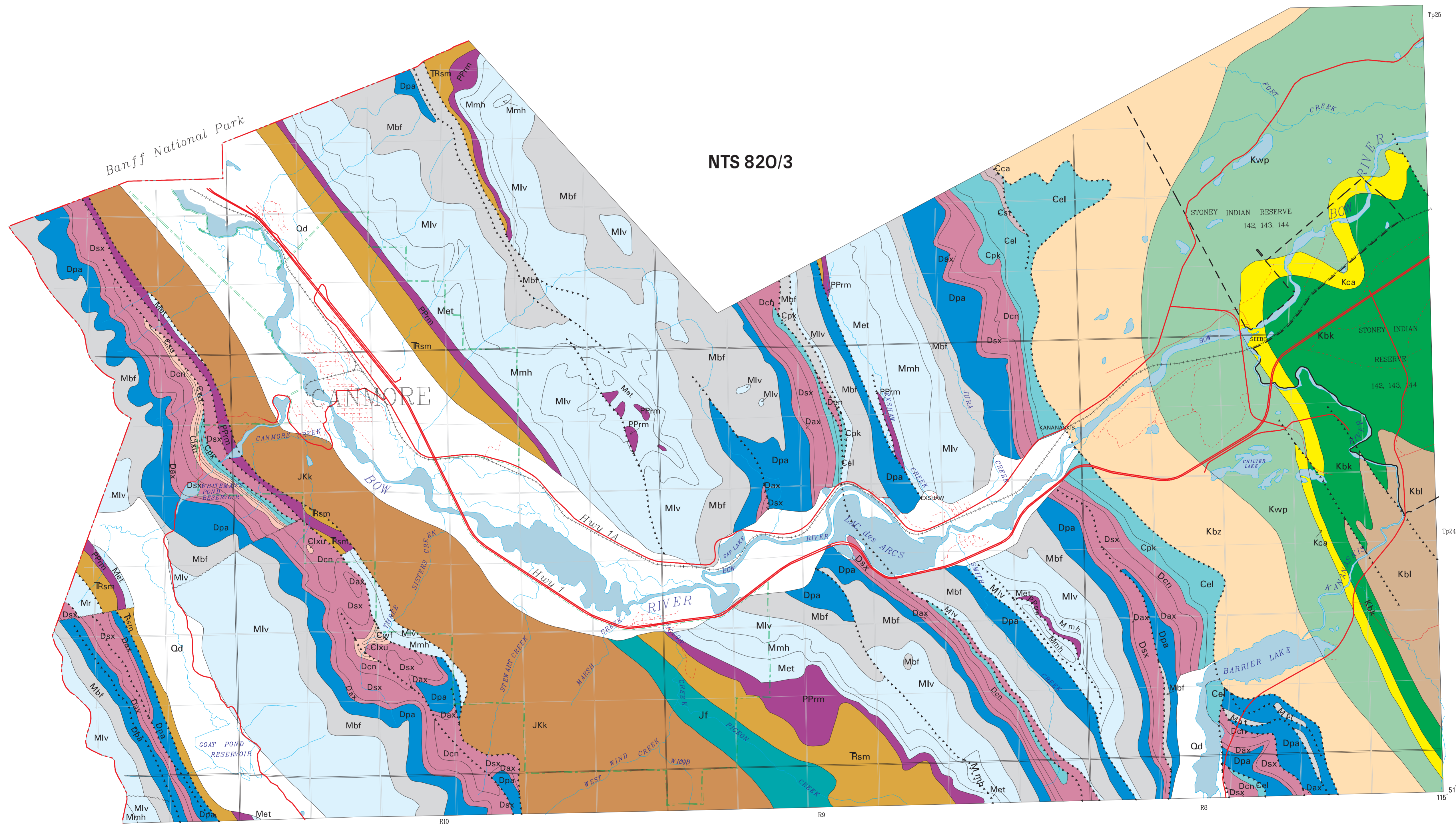


# GEOLOGY OF THE BOW CORRIDOR

Scale 1:50 000



## LEGEND

**Geology of the Bow Corridor**  
 Alberta Geological Survey Map 232A  
 Published 1998  
 Compilation by W.N. Hamilton, M.C. Price and D.K. Chao

Sources of Geological Information  
 Geological Survey of Canada Map 1265A Canmore (East Half) Alberta, by R.A. Price and E.W. Mountain, Published 1970  
 Geological Survey of Canada Map 1266A Canmore (West Half) Alberta, by R.A. Price and E.W. Mountain, Published 1970  
 Geological Map: Calgary to Lake Louise. Accompanies "A Geological Guide of the Eastern Cordillera along the Trans Canada Highway between Calgary and Revelstoke", Edited by I.A.R. Halliday and D.H. Mathewson, Canadian Exploration Frontiers Symposium, Banff, Alberta - September 22-26, 1971. Published by The Alberta Society of Petroleum Geologists.

Digital base map supplied by:  
 Resource Data Division, Alberta Environmental Protection,  
 Projection: Universal Transverse Mercator (NAD83)  
 Zone: 11

<b>QUATERNARY</b>	<b>CRETACEOUS</b>	<b>JURASSIC AND (?) CRETACEOUS</b>	<b>JURASSIC</b>	<b>TRIASSIC</b>
<b>Qd</b> Till, alluvium, colluvium, gravel, sand, silt	<b>Kbz</b> Brazeau Formation	<b>Jkk</b> Kootenay Formation	<b>Jf</b> Fernie Group	<b>Jsm</b> Sulphur Mountain Formation
<b>Kwp</b> Wapabisi Formation	<b>Kca</b> Cardium Formation			
<b>Kbl</b> Blairmore Group	<b>Kbk</b> Blackstone Formation			

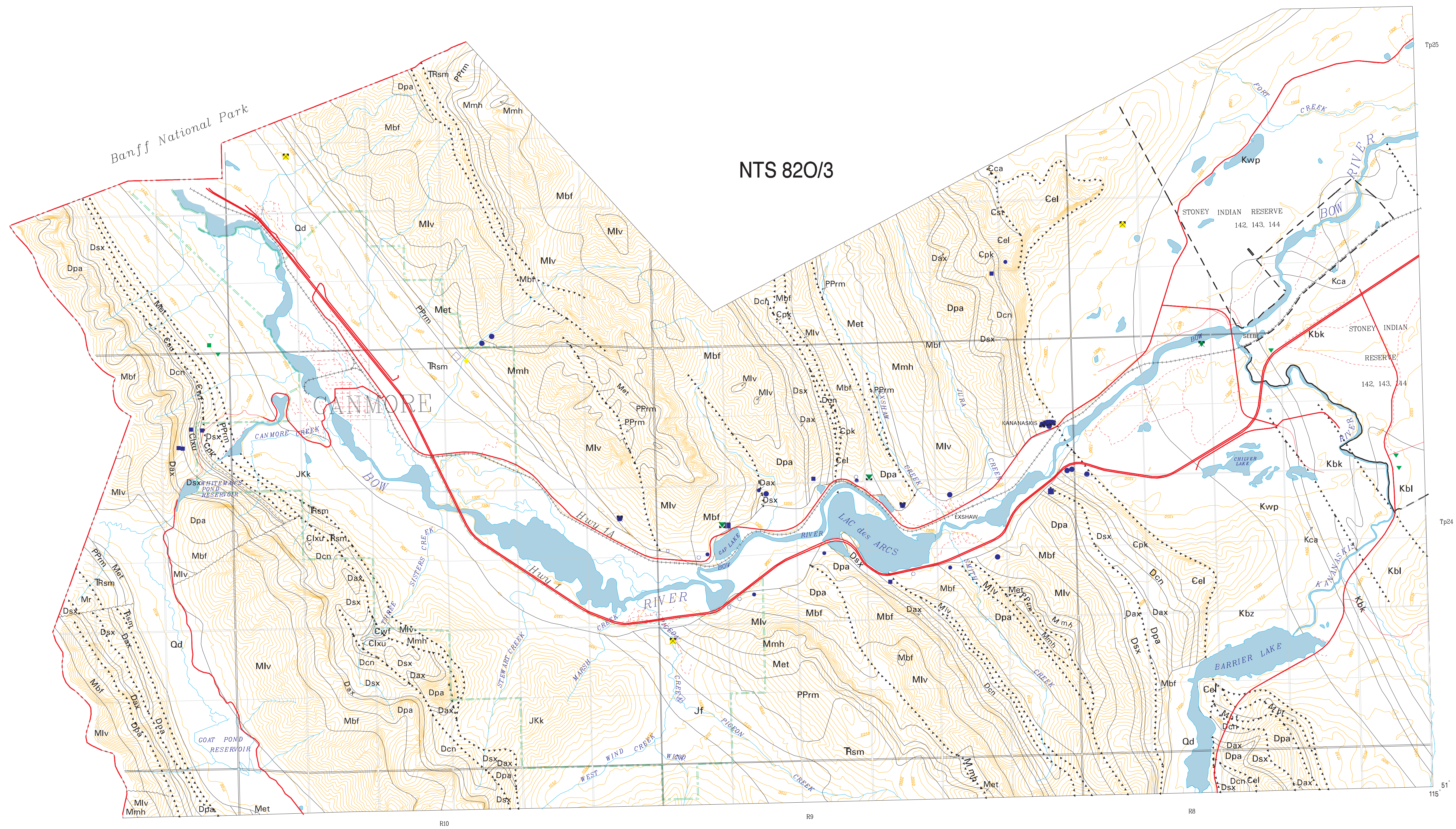
<b>PERMIAN AND PENNSYLVANIAN</b>	<b>MISSISSIPPIAN</b>	<b>DEVONIAN</b>
<b>PPrm</b> Rocky Mountain Group	<b>Met</b> Etheregton Formation	<b>Dpa</b> Palliser Formation
<b>Mmh</b> Mount Head Formation	<b>Mlv</b> Livingstone Formation	<b>Dax</b> Alexo Formation
<b>Mbf</b> Exshaw and Banff Formations	<b>Mr</b> Rundle Group	<b>Dsx</b> Southesk Formation
		<b>Dcn</b> Calm Formation
		<b>Dff</b> Fairholme Group

<b>UPPER CAMBRIAN</b>	<b>MIDDLE AND UPPER CAMBRIAN</b>	<b>MIDDLE CAMBRIAN</b>
<b>Clxu</b> Lynx Group	<b>Csu</b> Sullivan Formation	<b>Cwf</b> Waterfowl Formation
<b>Car</b> Arcatomy's Formation	<b>Cpk</b> Pika Formation	<b>Cel</b> Eldon Formation
	<b>Cst</b> Stephen Formation	<b>Cca</b> Cathedral Formation

<b>FAULTS</b>	<b>ROADS</b>	<b>BOUNDARIES</b>
Thrust fault (teeth indicate upthrust side)	Paved	Canmore Town
Transverse fault	Gravel	Stony Indian Reserve
	Unimproved	National park

# MINERAL DEPOSITS OF THE BOW CORRIDOR

Scale 1:50 000



## LEGEND

### Mineral Deposits of the Bow Corridor

Alberta Geological Survey Map 232B

Published 1998

Compilation by W.N. Hamilton, M.C. Price and D.K. Chao

Sources of Geological Information:  
 Geological Survey of Canada Map 1265A Canmore (East Half) Alberta, by R.A. Price and E.W. Mountjoy. Published 1970.  
 Geological Survey of Canada Map 1265A Canmore (West Half) Alberta, by R.A. Price and E.W. Mountjoy. Published 1970.  
 Geological Map: Calgary to Lake Louise. Accompanies "A Geological Guide of the Eastern Cordillera along the Trans Canada Highway between Calgary and Revelstoke", Edited by I.A.R. Halliday and D.H. Mathewson. "Canadian Exploration Frontiers Symposium, Banff, Alberta - September 22-26, 1971. Published by The Alberta Society of Petroleum Geologists.

Source of Mineral Deposits Information:  
 AGS Alberta Mineral Deposits and Occurrences (IAMDO) file.

Digital base maps supplied by:  
 Resource Data Division, Alberta Environmental Protection.  
 Projection: Universal Transverse Mercator (NAD83)  
 Zone: 11

Contour interval 50 meters

### MINERAL DEPOSIT

- Dolomite
- Limestone
- Phosphate
- Quartzite
- Sandstone/Building Stone
- Clay or Shale, Brick
- Clay-Stoneware/Refractory

### STATUS

- Prospect
- Showing
- Test
- Producer
- Past Producer

- Qd QUATERNARY  
Till, alluvium, colluvium
- Kbz CRETACEOUS  
Brazeau Formation
- Kwp Wapitani Formation
- Kcr Cardium Formation
- Kbk Blackstone Formation
- Kbl Blaimore Group
- JKk JURASSIC AND (?) CRETACEOUS  
Kootenay Formation
- Jf JURASSIC  
Fernie Group
- TRsm TRIASSIC  
Sulphur Mountain Formation
- PPrm PERMIAN AND PENNSYLVIAN  
Rocky Mountain Group
- Met MISSISSIPPIAN  
Etherington
- Mmh Mount Head Formation
- Mlv Livingstone Formation
- Mr Rundle Group
- Mbf Banff and Exshaw Formations
- DEVONIAN
- Dpa Palliser Formation
- Dax Alexo Formation
- Dsx Southesk Formation
- Dcn Cairn Formation
- Df Fairholme Group
- UPPER CAMBRIAN
- Ckxu Lynx Goup, Upper
- Csu Sullivan Formation
- MIDDLE AND UPPER CAMBRIAN
- Cwf Waterfowl Formation
- MIDDLE CAMBRIAN
- Car Arctomys Formation
- Cpk Pika Formation
- Cel Eldon Formation
- Cst Stephen Formation
- Cca Cathedral Formation

### FAULTS

- Thrust fault (teeth indicate upthrust side)
- Transverse fault

### ROADS

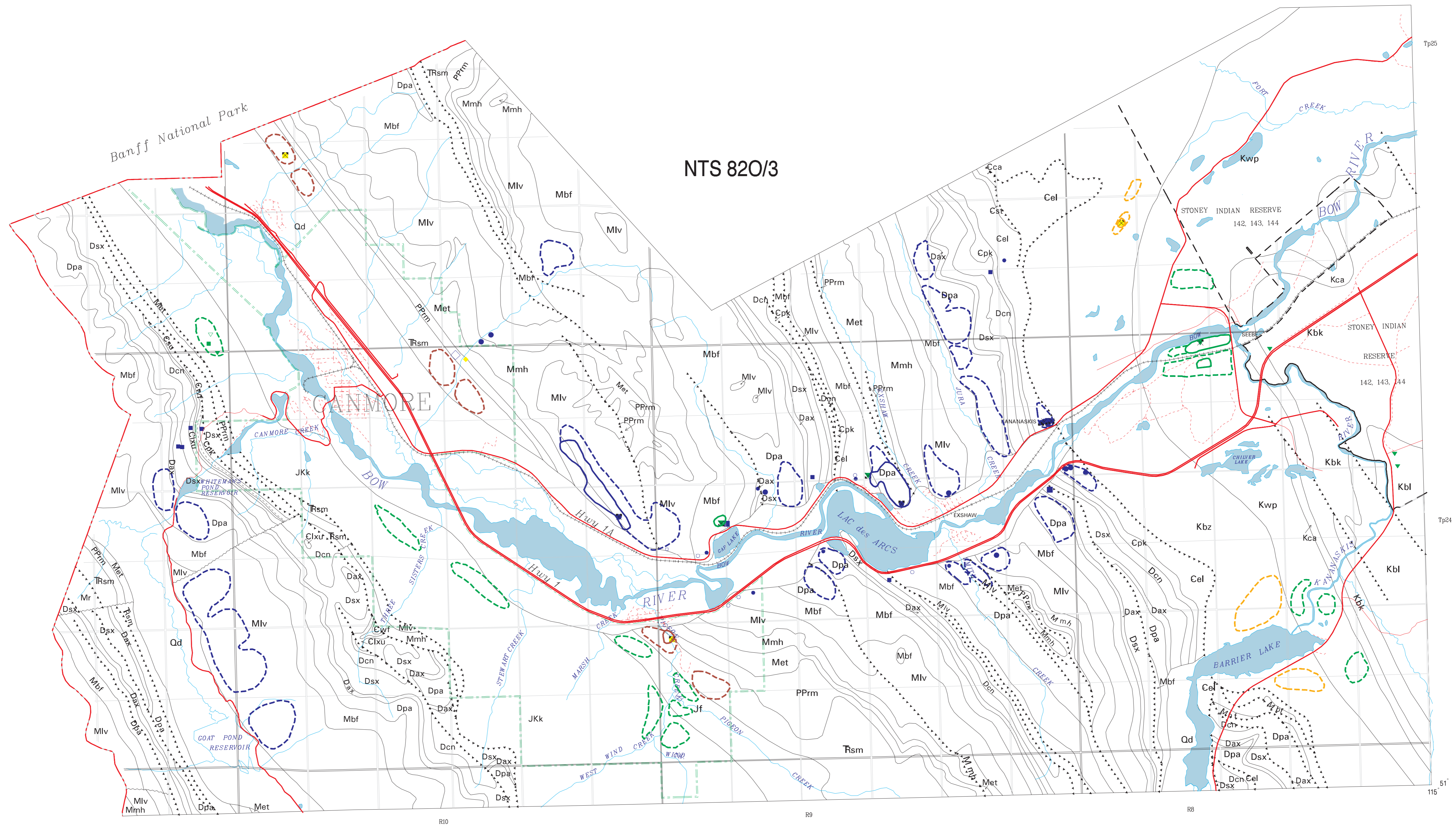
- Paved
- Gravel
- Unimproved

### BOUNDARIES

- Canmore Town
- Stony Indian Reserve
- National park

# MINERAL DEPOSITS AND PROSPECTIVE AREAS IN THE BOW CORRIDOR

Scale 1:50 000



## LEGEND

### Mineral Deposits and Prospective Areas in the Bow Corridor

Alberta Geological Survey Map 232C

Published 1998

Compilation by W.N. Hamilton, M.C. Price and D.K. Chao

Sources of Geological Information  
 Geological Survey of Canada Map 1265A Canmore (East Half) Alberta, by R.A. Price and E.W. Mountjoy, Published 1970  
 Geological Survey of Canada Map 1265A Canmore (West Half) Alberta, by R.A. Price and E.W. Mountjoy, Published 1970  
 Geological Map: Calgary to Lake Louise. Accompanies "A Geological Guide of the Eastern Cordillera along the Trans Canada Highway between Calgary and Revelstoke". Edited by I.A.R. Halliday and D.H. Mathewson; Canadian Exploration Frontiers Symposium, Banff, Alberta - September 22-26, 1971. Published by The Alberta Society of Petroleum Geologists.

Source of Mineral Deposits Information:  
 AGS Alberta Mineral Deposits and Occurrences (AMDO) file.

Digital base maps supplied by:  
 Resource Data Division, Alberta Environmental Protection.  
 Projection: Universal Transverse Mercator (NAD83)  
 Zone: 11

### MINERAL DEPOSIT

- Dolomite
- Limestone
- Phosphate
- Quartzite
- Sandstone/Building Stone
- Clay or Shale, Brick
- Clay-Stoneware/Refractory

### STATUS

- Prospect
- Showing
- Test
- Producer
- Past Producer

### PROSPECTIVE AREA

- 
- 
- 
- 

NOTE: The areas outlined as "prospective areas" for minerals are irrespective of land use zoning constraints. They are areas where the potential host rock units are present in structural and physiographic settings suitable for quarrying, with existing or feasible road access. A solid outline marks the limit of an existing quarry.

### QUATERNARY

Qd Till, alluvium, colluvium

### CRETACEOUS

Kbz Brazeau Formation  
 Kwp Wapiti Formation  
 Kcr Cardium Formation  
 Kbk Blackstone Formation  
 Kbl Blairmore Group

### JURASSIC AND (?) CRETACEOUS

JKk Kootenay Formation  
 Jf Fernie Group

### TRIASSIC

TRsm Sulphur Mountain Formation

### PERMIAN AND PENNSYLVIAN

PPrm Rocky Mountain Group

### MISSISSIPPIAN

Met Etherington  
 Mmh Mount Head Formation  
 Mlv Livingstone Formation  
 Mr Rundle Group  
 Mbf Banff and Exshaw Formations

### DEVONIAN

Dpa Palliser Formation  
 Dax Alexo Formation  
 Dsx Southesk Formation  
 Dcn Cairn Formation  
 Df Fairholme Group

### UPPER CAMBRIAN

Clxu Lynx Goup, Upper  
 Csu Sullivan Formation

### MIDDLE AND UPPER CAMBRIAN

Cwf Waterfowl Formation

### MIDDLE CAMBRIAN

Car Arctomys Formation  
 Cpk Pika Formation  
 Cel Eldon Formation  
 Cst Stephen Formation  
 Cca Cathedral Formation

### FAULTS

- Thrust fault (teeth indicate upthrust side)
- Transverse fault

### ROADS

- Paved
- Gravel
- Unimproved

### BOUNDARIES

- Canmore Town
- Stony Indian Reserve
- National park