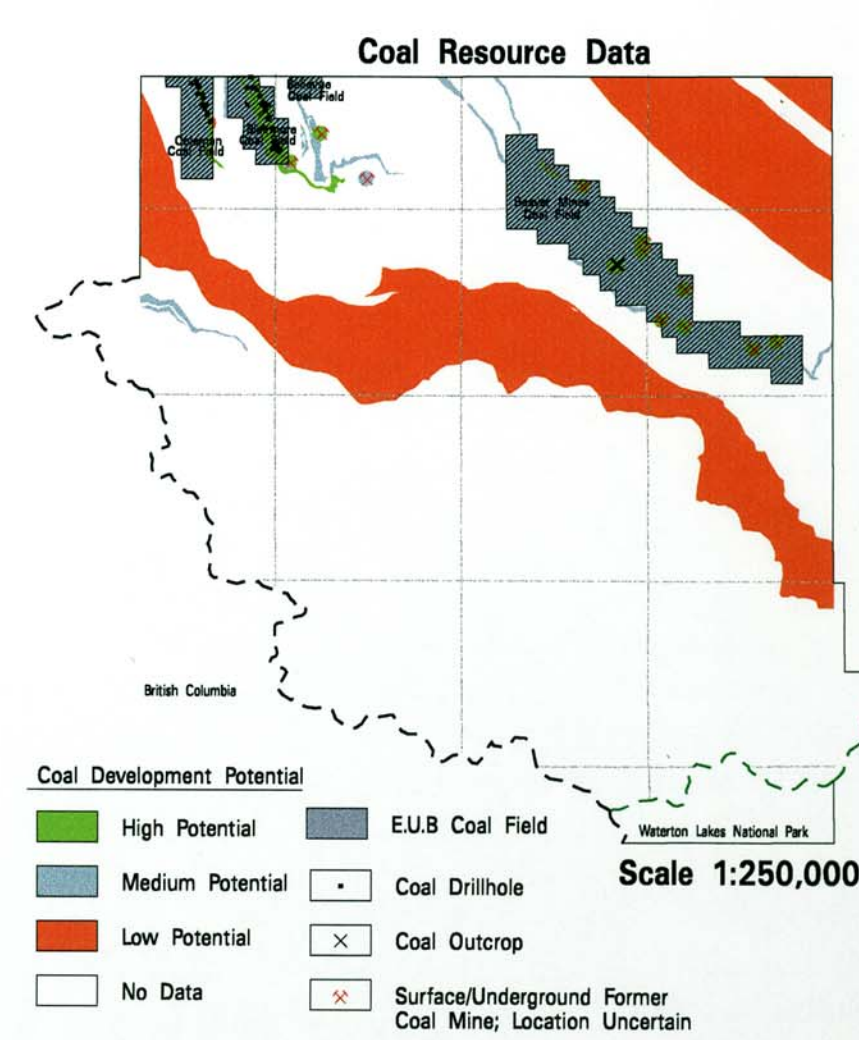
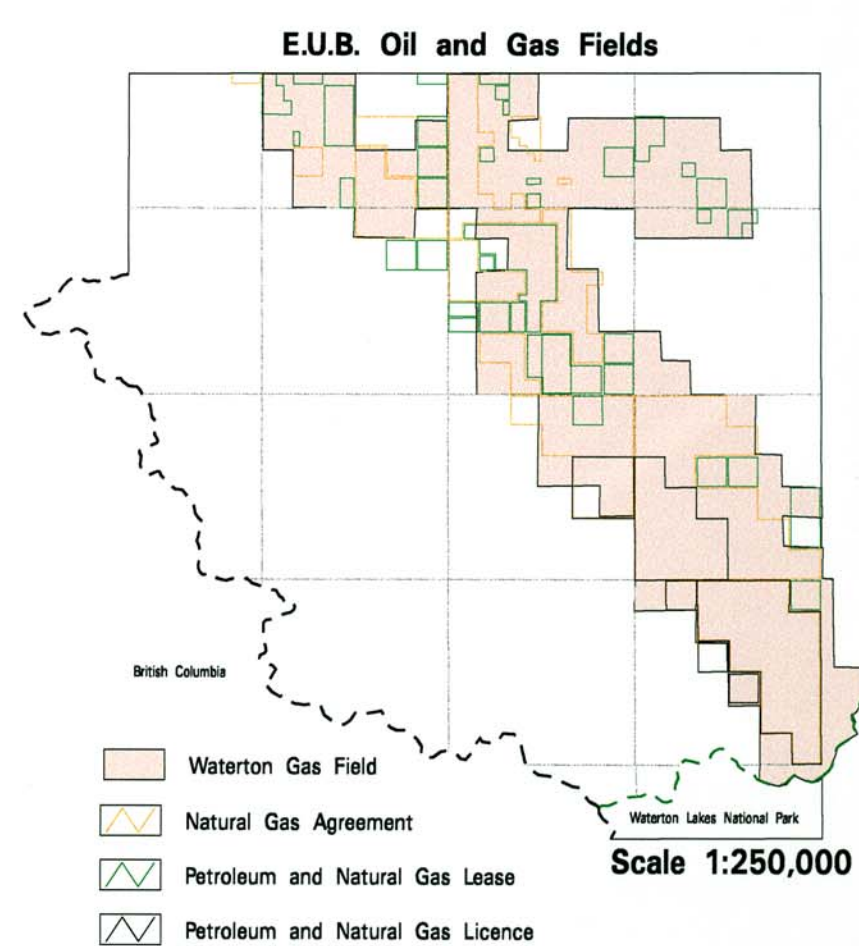
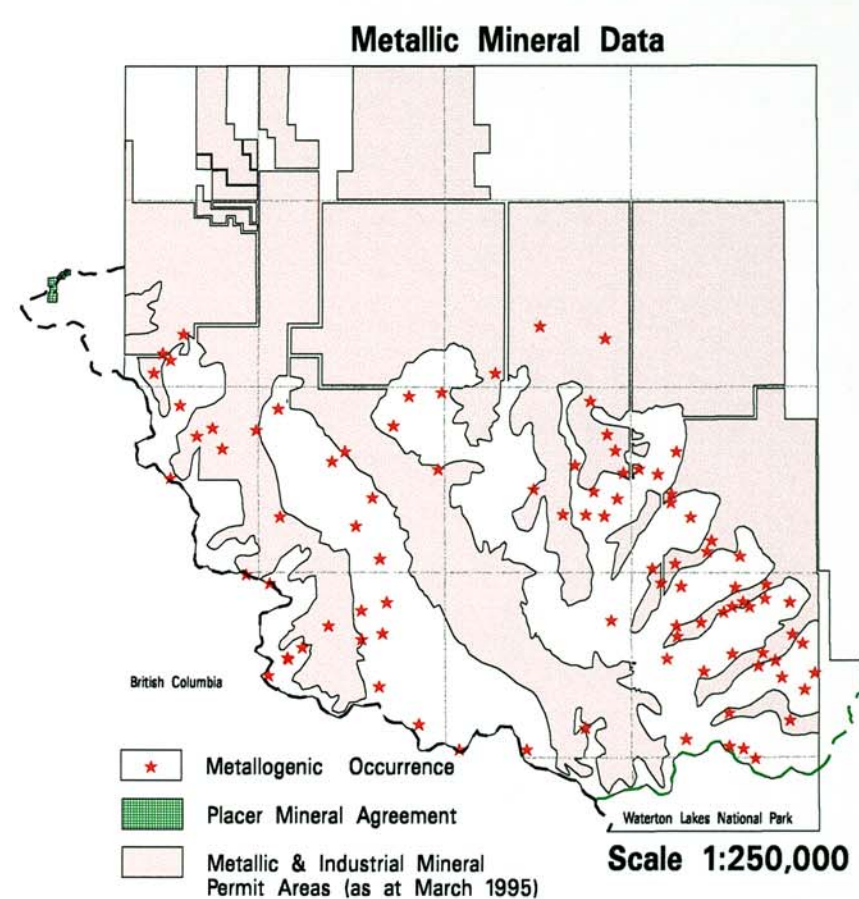
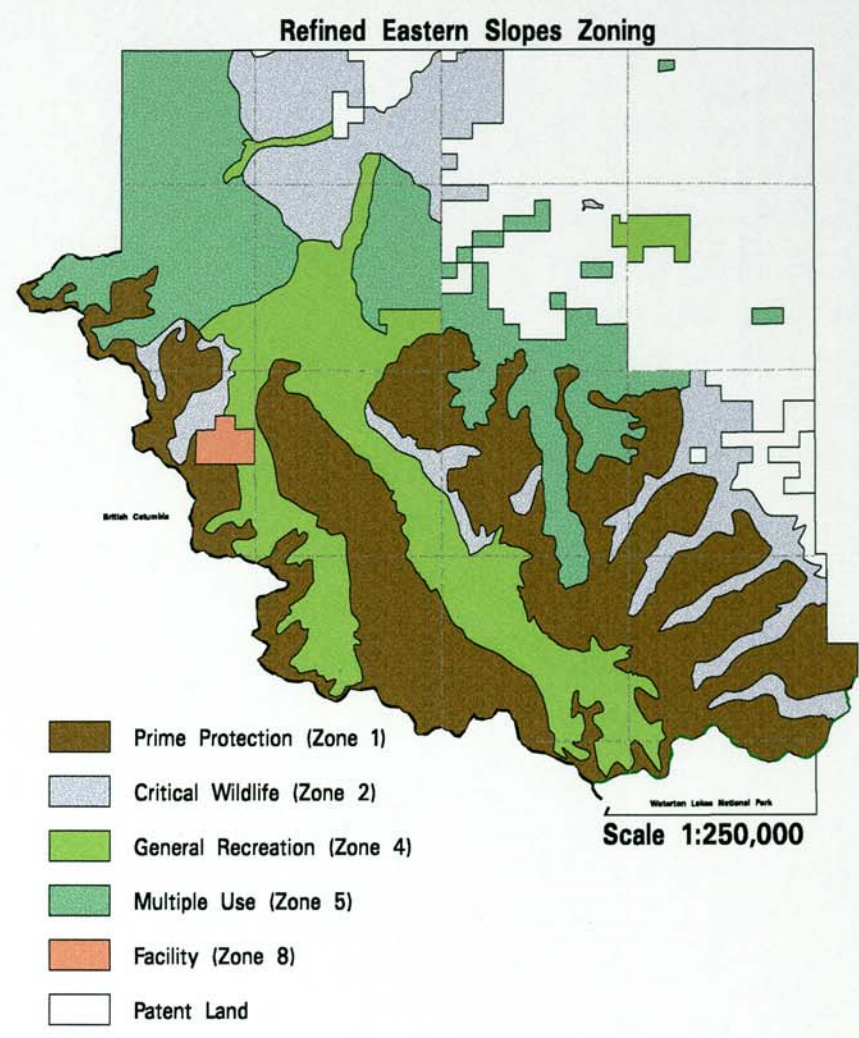
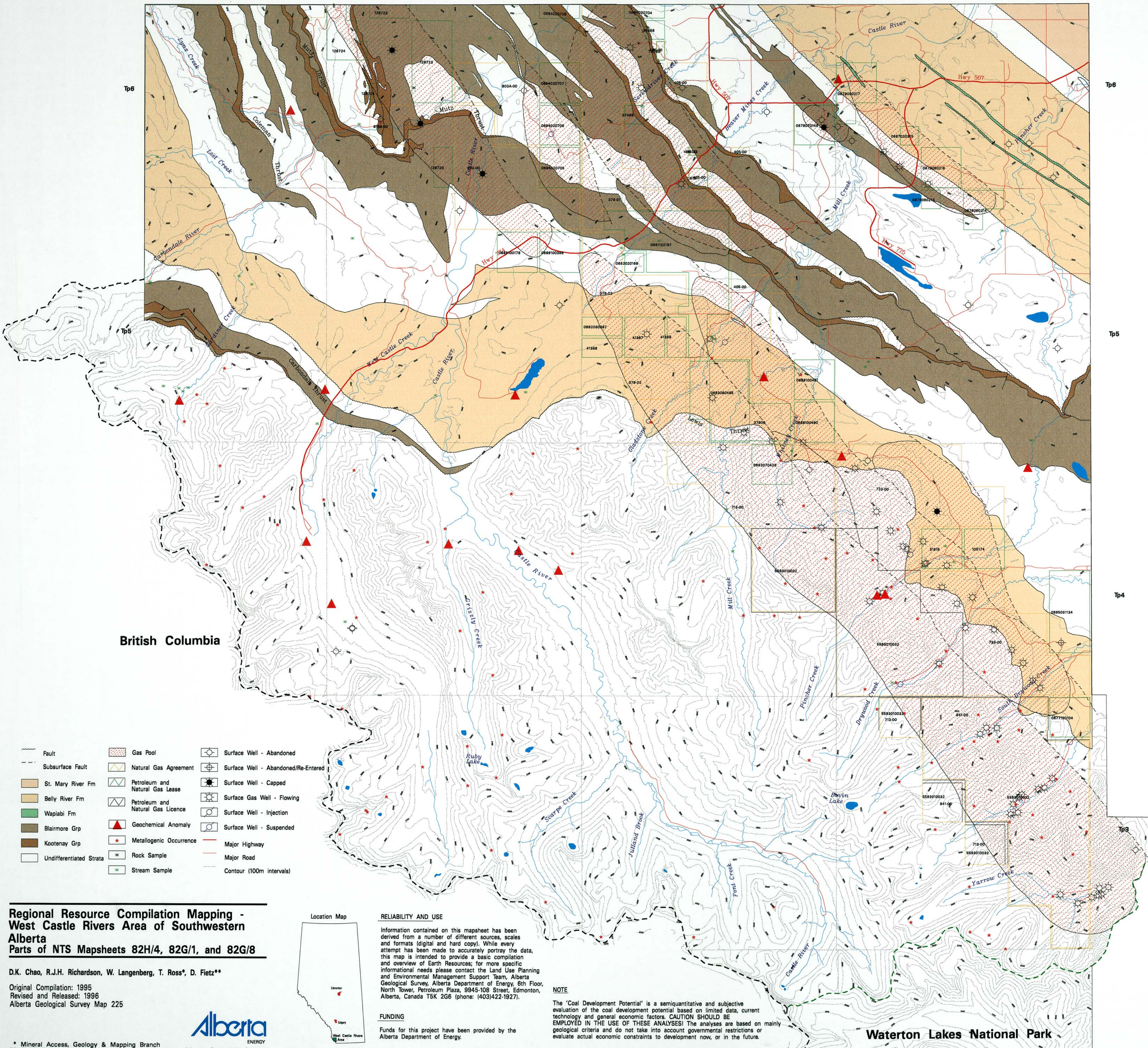


114.5 49.5 R4 R3 R2 R1 W5 114.0 49.5.0



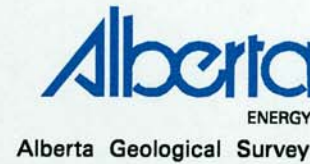
British Columbia

- | | | |
|---------------------------|-------------------------------------|---------------------------------------|
| --- Fault | ▨ Gas Pool | ○ Surface Well - Abandoned |
| - - - Subsurface Fault | ▨ Natural Gas Agreement | ⊕ Surface Well - Abandoned/Re-Entered |
| ▨ St. Mary River Fm | ▨ Petroleum and Natural Gas Lease | ⊕ Surface Well - Capped |
| ▨ Belly River Fm | ▨ Petroleum and Natural Gas Licence | ⊕ Surface Gas Well - Flowing |
| ▨ Wapiabi Fm | ▨ Geochemical Anomaly | ⊕ Surface Well - Injection |
| ▨ Blairmore Grp | ★ Metallogenic Occurrence | ⊕ Surface Well - Suspended |
| ▨ Kootenay Grp | ★ Rock Sample | — Major Highway |
| ▨ Undifferentiated Strata | ⊕ Stream Sample | — Major Road |
| | | — Contour (100m intervals) |

Regional Resource Compilation Mapping - West Castle Rivers Area of Southwestern Alberta
Parts of NTS Mapsheets 82H/4, 82G/1, and 82G/8

D.K. Chao, R.J.H. Richardson, W. Langenberg, T. Ross*, D. Fietz**

Original Compilation: 1995
Revised and Released: 1996
Alberta Geological Survey Map 225



* Mineral Access, Geology & Mapping Branch
** ELAD Enterprises Inc.



RELIABILITY AND USE

Information contained on this mapsheet has been derived from a number of different sources, scales and formats (digital and hard copy). While every attempt has been made to accurately portray the data, this map is intended to provide a basic compilation and overview of Earth Resources; for more specific informational needs please contact the Land Use Planning and Environmental Management Support Team, Alberta Geological Survey, Alberta Department of Energy, 8th Floor, North Tower, Petroleum Plaza, 9845-108 Street, Edmonton, Alberta, Canada T5K 2G6 (phone: 403422-1927).

FUNDING

Funds for this project have been provided by the Alberta Department of Energy.

NOTE

The 'Coal Development Potential' is a semiquantitative and subjective evaluation of the coal development potential based on limited data, current technology and general economic factors. CAUTION SHOULD BE EMPLOYED IN THE USE OF THESE ANALYSES! The analyses are based on mainly geological criteria and do not take into account governmental restrictions or evaluate actual economic constraints to development now, or in the future.

Waterton Lakes National Park