

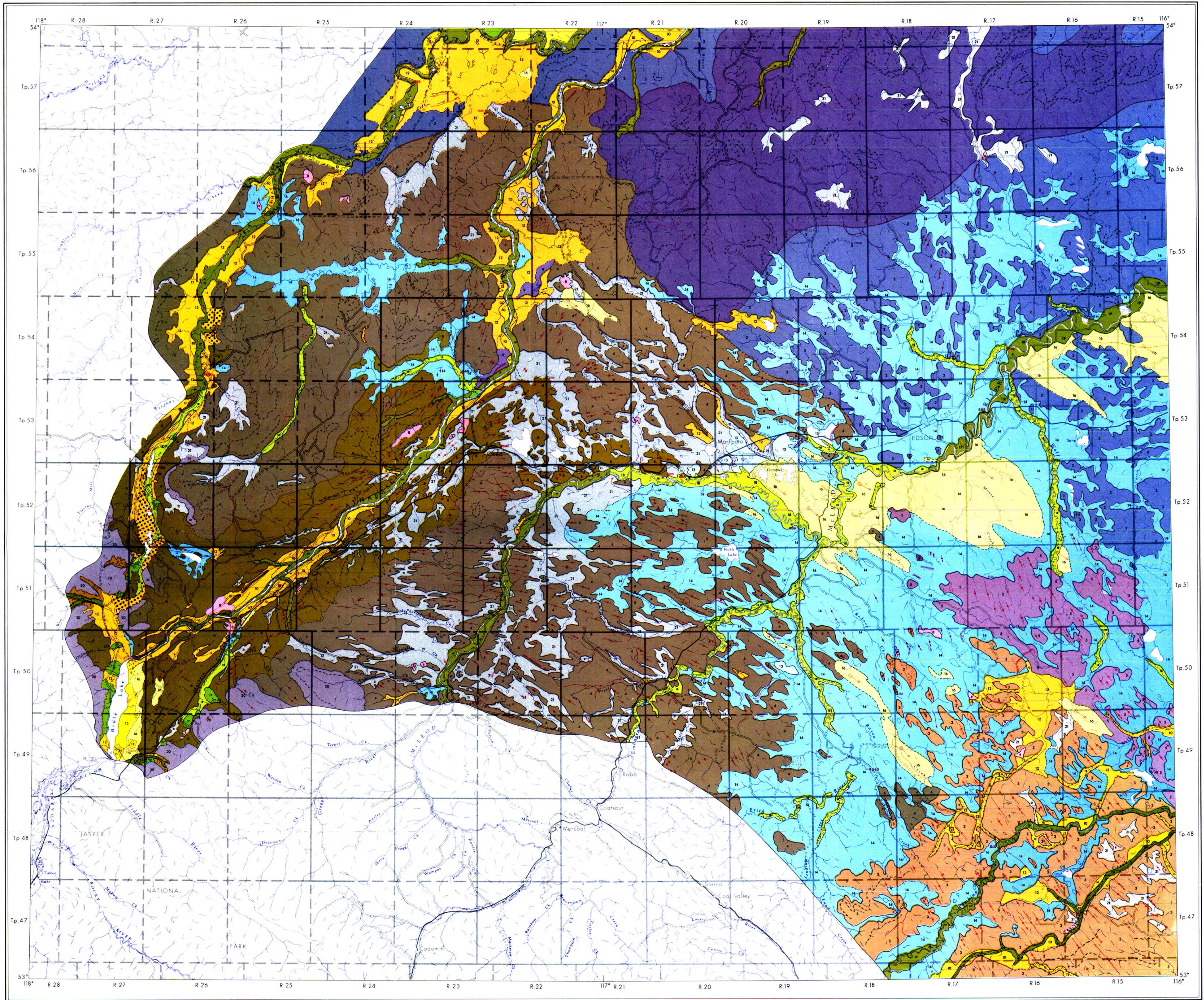


QUATERNARY
RECENT

- LEGEND**
- ORGANIC DEPOSITS**
- 21 Peat
- COLLUVIAL DEPOSITS**
- 20 Colluvium: mainly soil creep; mixed weathered bedrock and till, with some bedrock exposures
- ALLUVIAL DEPOSITS**
- 19 Alluvium: river gravel, some sand
 - 18 Alluvium: river sand, some silt; minor lenses of gravel
 - 17 Alluvial fan (active and inactive forms): gravel, locally derived
- AEOLIAN DEPOSITS**
- 16 Inactive deposits: fine-grained sand; dunes common
 - 15 Active dunes: fine to very fine grained sand
- PLEISTOCENE**
- LACUSTRINE DEPOSITS**
- 14 Lake sediments: clay, silt, and sand; laminated in places
 - 13 Deltaic sediments: crossbedded sand and pebbly sand with clay and silt beds
- GLACIO-FLUVIAL DEPOSITS**
- 12 Outwash: sand and gravel, undifferentiated
 - Pitted outwash: sand and gravel; inclusions of till, silt, and clay
 - 10 Meltwater channel deposits: terrace gravels, some sand lenses
 - 9 Esker complex: sand and gravel, inclusions of till, silt, and clay
 - 8 Kame, kame moraine: sand and gravel, inclusions of till, silt, and clay
- GLACIAL DEPOSITS**
- 7 Drystone Creek Till: Cordilleran source; stony; numerous locally derived erratics, mainly limestone; silty clay matrix; very high carbonate content
 - 6 Obed Till: Cordilleran source; very stony; quartzite, limestone, and sandstone erratics; sandy clay matrix; high carbonate content
 - 5 Mixed till: Continental and Cordilleran sources; moderately stony; quartzite, limestone, and sandstone of Cordilleran source; common to uncommon granite and high-grade metamorphic rocks of Canadian Shield source; silty, sandy clay matrix; low carbonate content
 - 4 Marlboro Till: Cordilleran source; moderately stony; quartzite, limestone, and sandstone of Cordilleran source; granite of Canadian Shield source very uncommon; silty, sandy clay matrix; moderate carbonate content
 - 3 Raven Creek Till: Cordilleran source; moderately stony; quartzite, limestone, and sandstone of Cordilleran source; granite of Canadian Shield source uncommon; silty, sandy clay matrix; carbonate content
 - 2 Edson Till: Continental source; few stones; quartzite, granite, and high-grade metamorphic rocks of Canadian Shield source common, limestone uncommon; silty clay matrix; very low carbonate content
 - 1 Mayberne Till: Continental source; moderately to very stony; numerous metaquartzite rocks; granite and high-grade metamorphic rocks of Canadian Shield source common to scarce; silty, sandy clay matrix; very low carbonate content

- Locality of granite and high-grade metamorphic rock erratics of Canadian Shield source within the Marlboro till
- Locality of low-to medium-grade metamorphic rock erratics of Cordilleran source
- Altitude of surficial geological feature
- Geologic boundary: defined, approximate, inferred
- Scarp overlain by surficial material; defined from aerial photographs
- Recent scarp
- Break in slope, glacial meltwater erosion
- Glacial meltwater channel
- Till ridges
- Drumlin, arrow points in direction of ice movement; length of arrow indicates length of drumlin; includes drumlins covered by a thin layer of other sediment
- Groove, fluting, or lineal feature parallel to direction of glacial movement; length of line indicates length of groove or fluting; includes grooves and flutings covered by a thin layer of other sediment
- Wind direction, inferred from U-shaped and parabolic dunes
- Course of abandoned stream channel; flow direction indicated
- Measured section
- Esker ridge
- Gravel pit

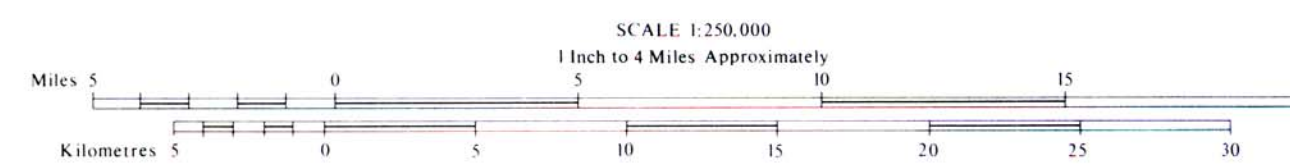
Surficial geology by M. A. Roed, 1964, 1965 and 1966



Cartographic editing by J. E. Manners
 Geological map drawn by F. L. Copeland, 1969
 Drainage base provided by Surveys and Mapping Branch,
 Department of Energy, Mines and Resources
 Copies of this map may be obtained from the Research Council
 of Alberta, Edmonton, Alberta, Canada.

Published 1970

- LEGEND**
- Highway (paved or gravelled)
 - Road (gravelled or dirt)
 - Truck trail
 - Railway



MAP 33
SURFICIAL GEOLOGY
EDSON
 NTS 83F

- LEGEND**
- Township boundary
 - National Park boundary
 - River or stream
 - Stream intermittent
 - Lake