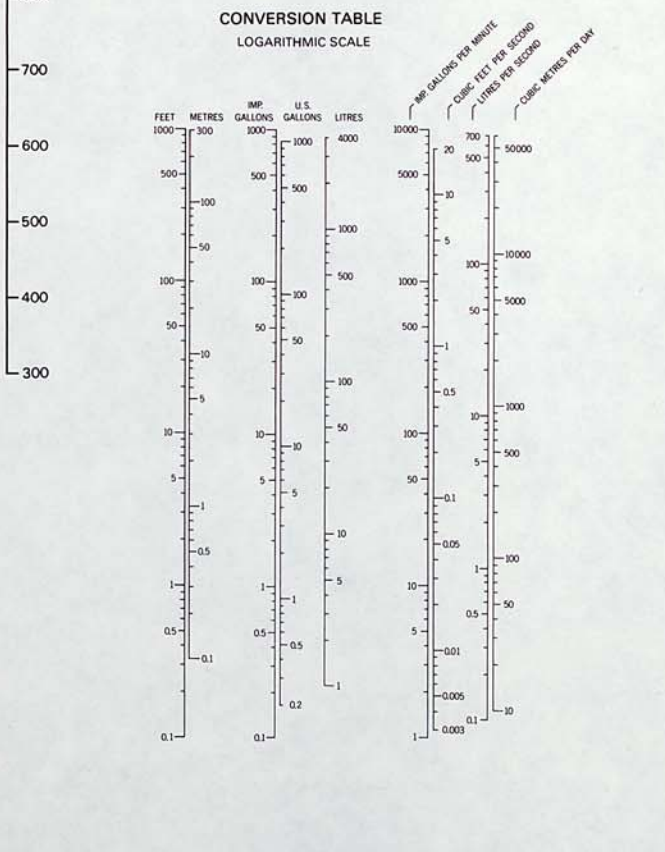
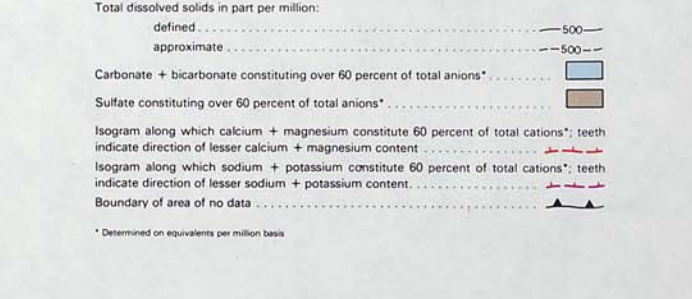
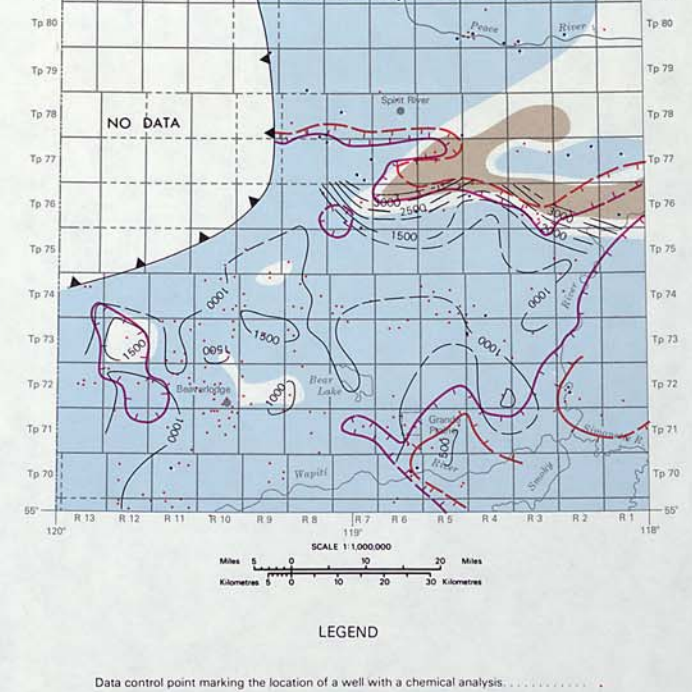
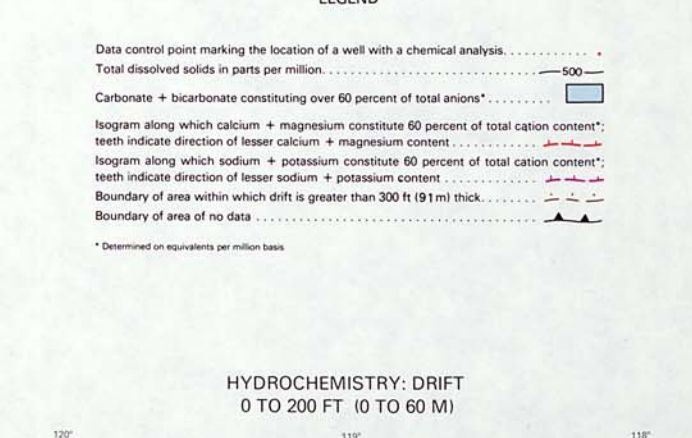
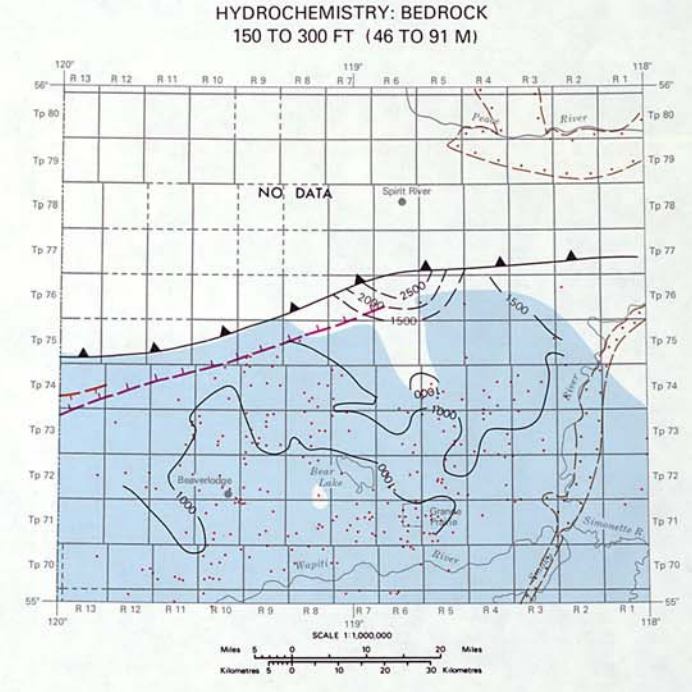
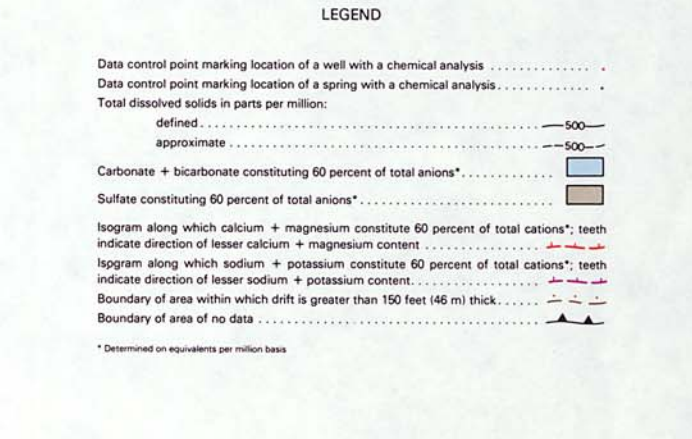
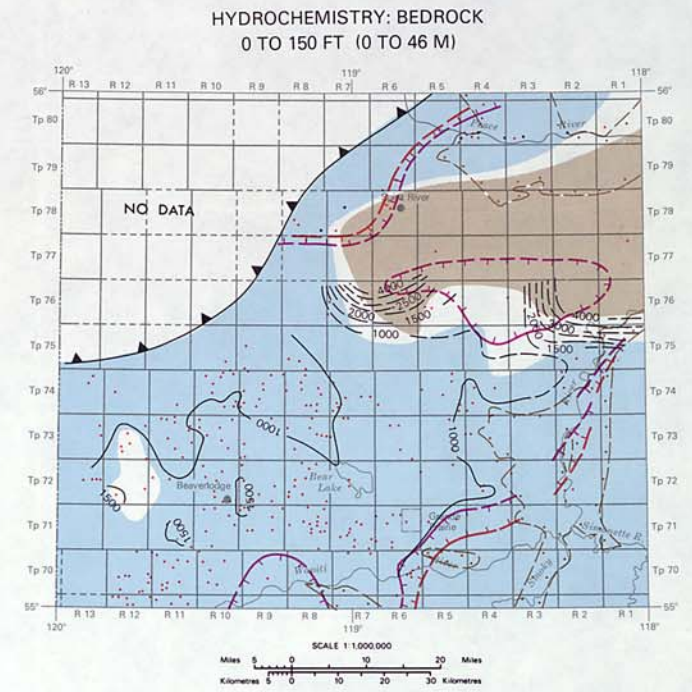
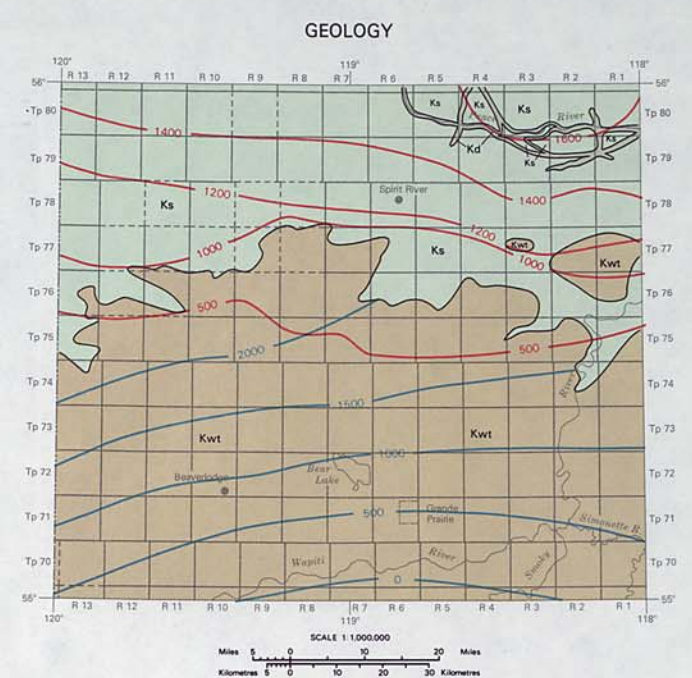
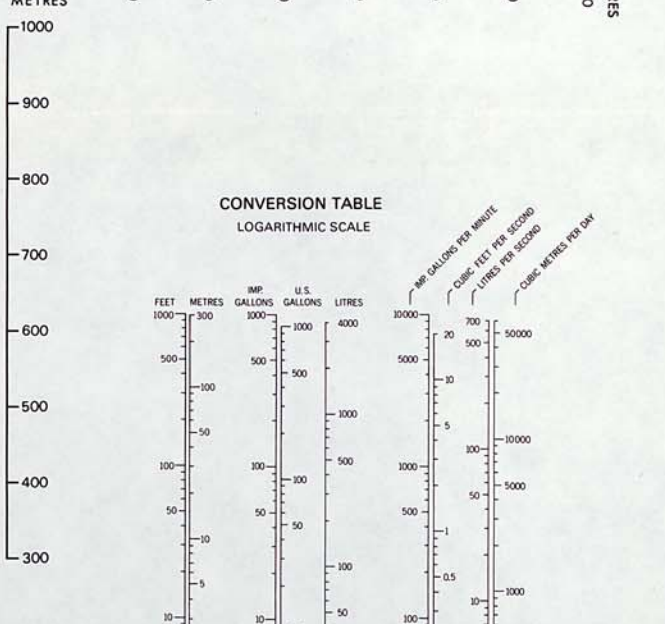
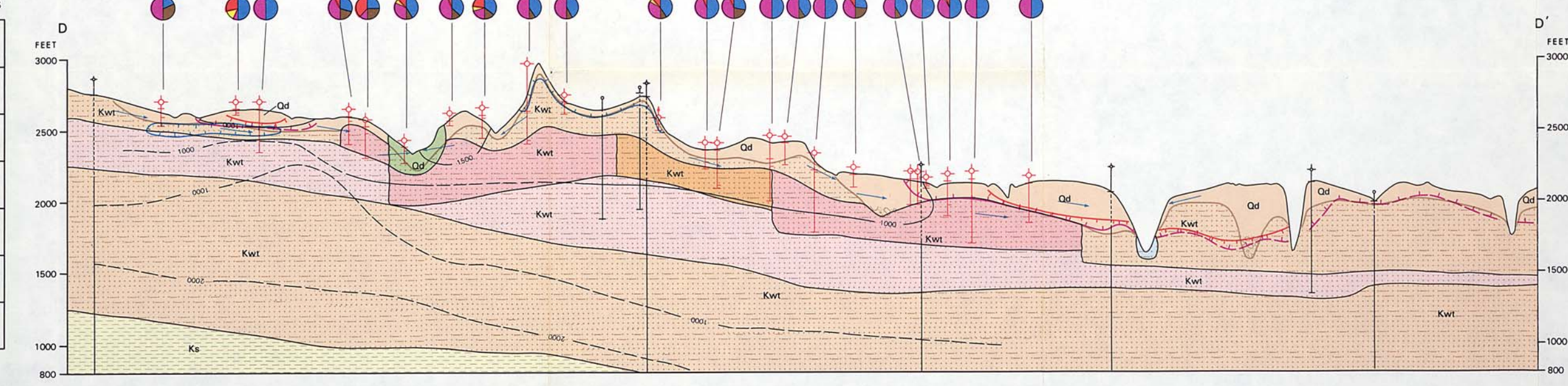
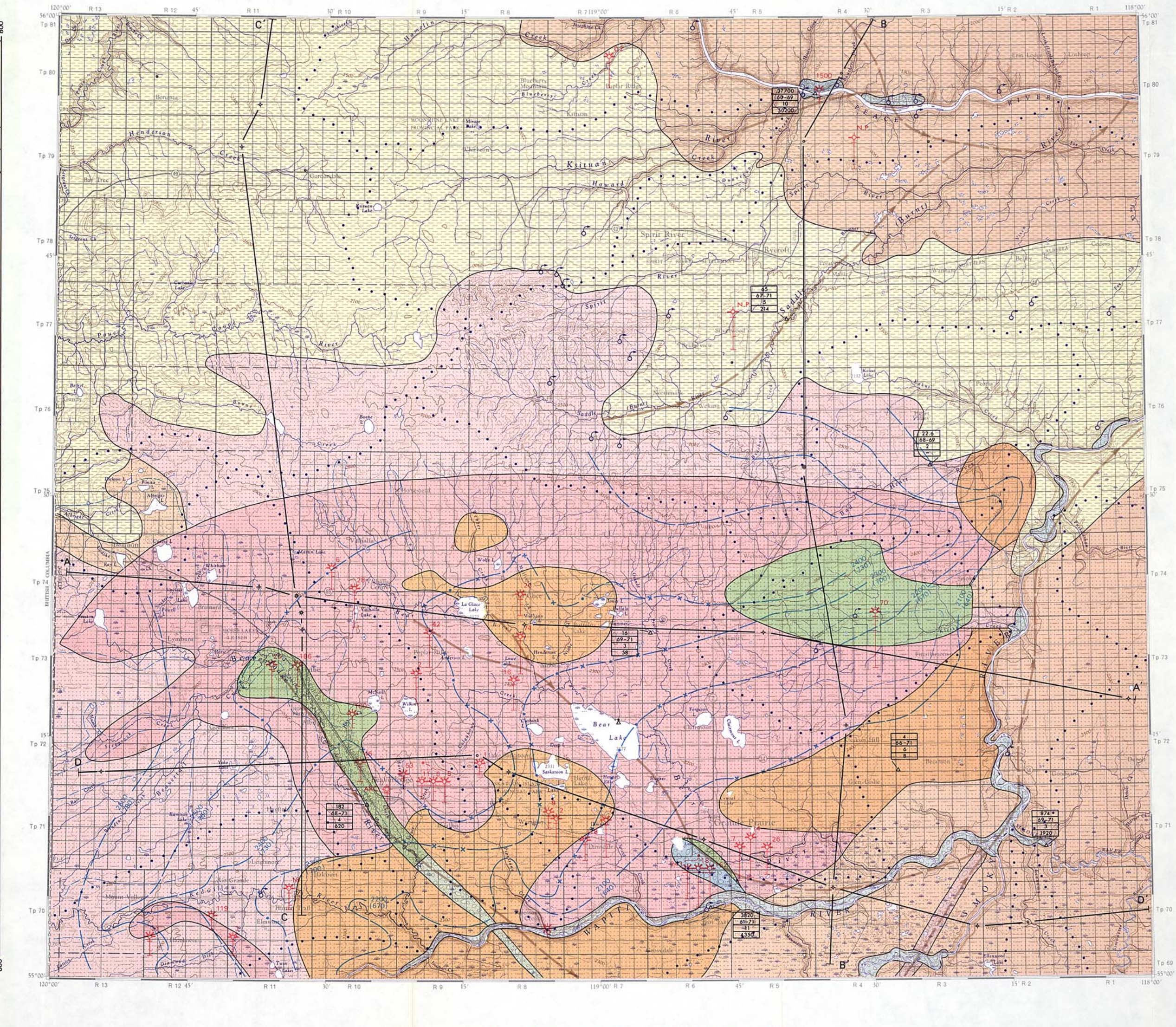
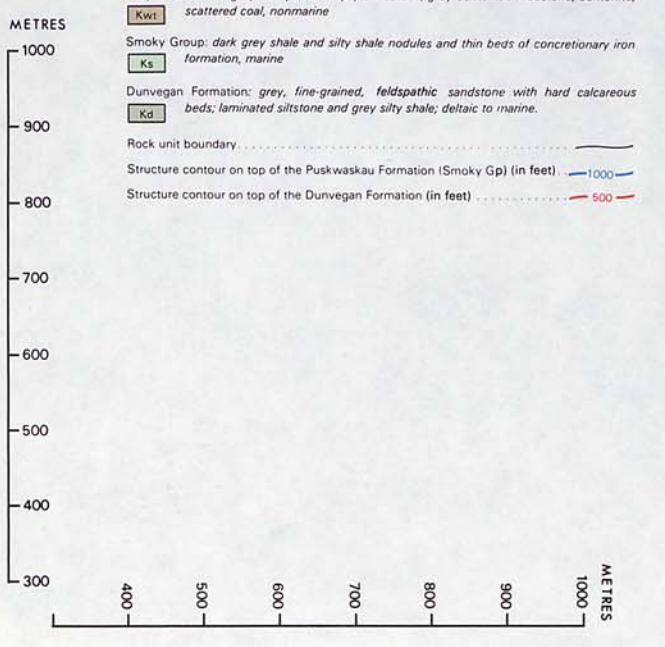
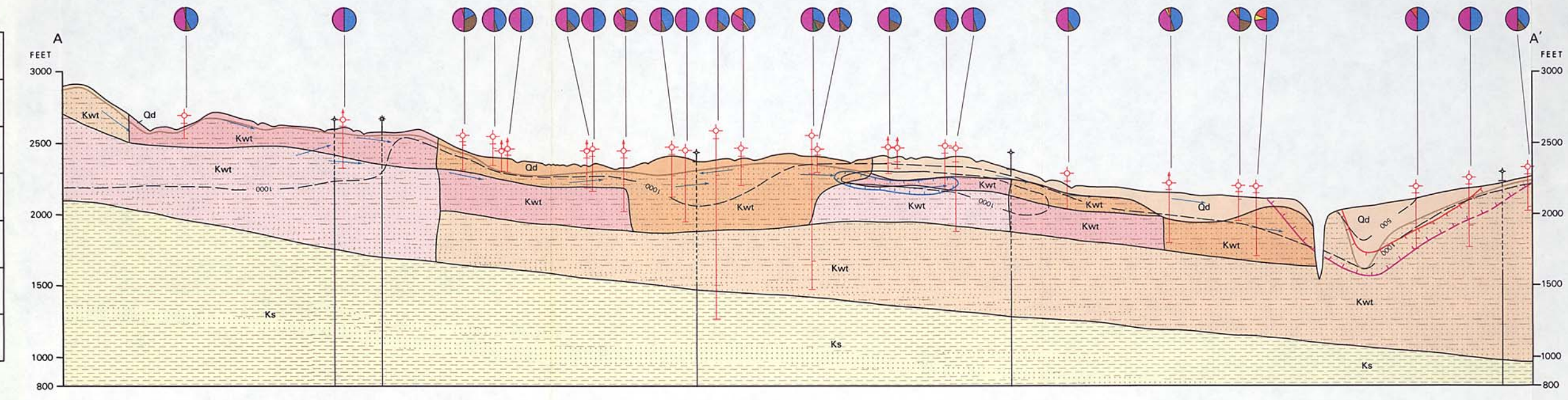
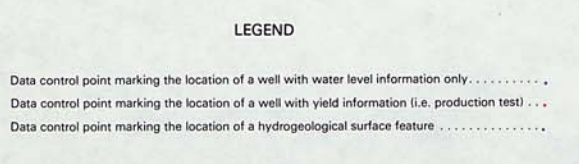
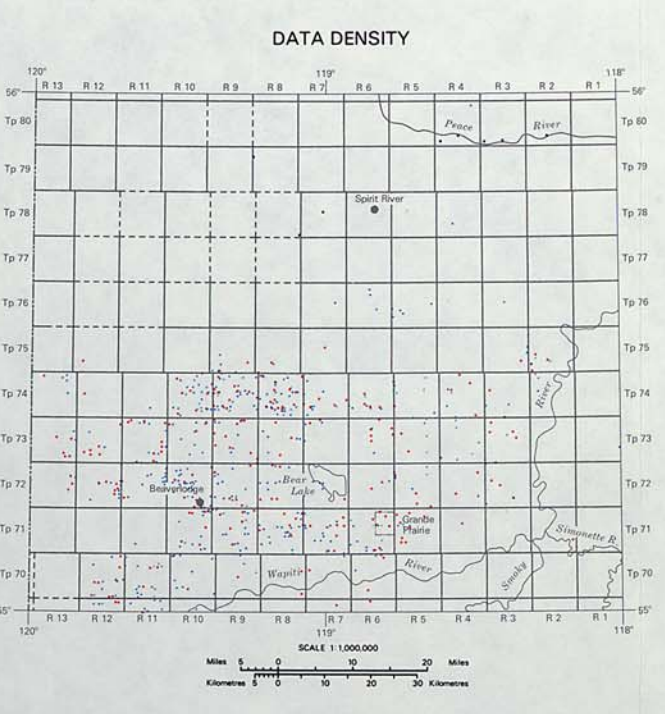
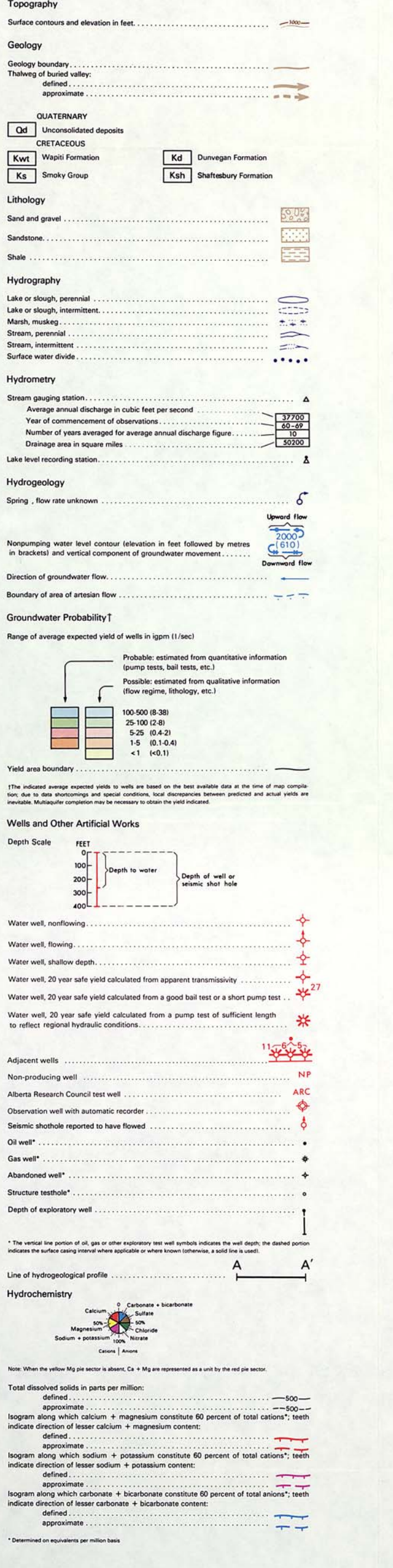


**MAIN MAP LEGEND**



SCALE 1:250,000  
Kilometres 0 5 10 15 20 25 30 Miles

**HYDROGEOLOGICAL MAP  
GRANDE PRAIRIE AREA  
ALBERTA**  
NTS 83 M



All elevations in feet above mean sea level.  
Vertical exaggeration approximately 40X.  
An expanded legend (Report 72-12) and explanatory notes for use with this map series is available from the Alberta Research Council, Edmonton, Canada.  
Map to accompany Report 76-4.  
Hydrogeology by D. Hackbart, 1974.  
Editing by A. Campbell.  
Dusting by R. Swenson.