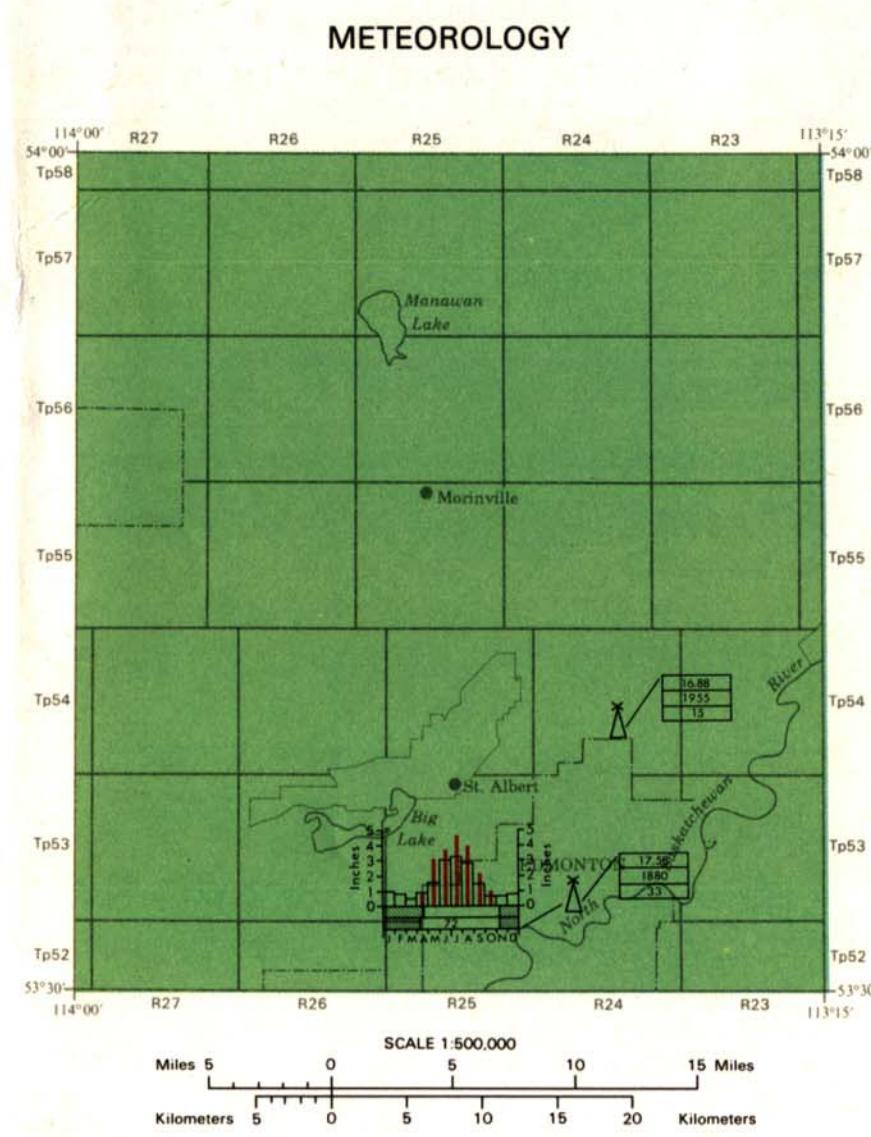
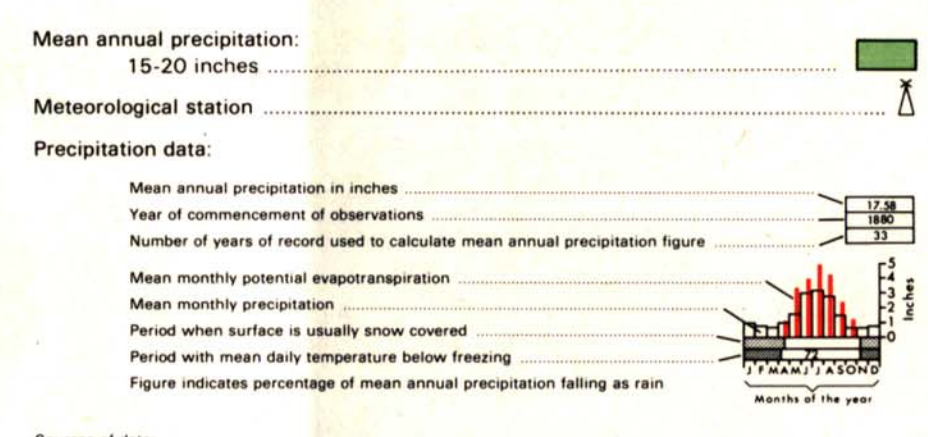
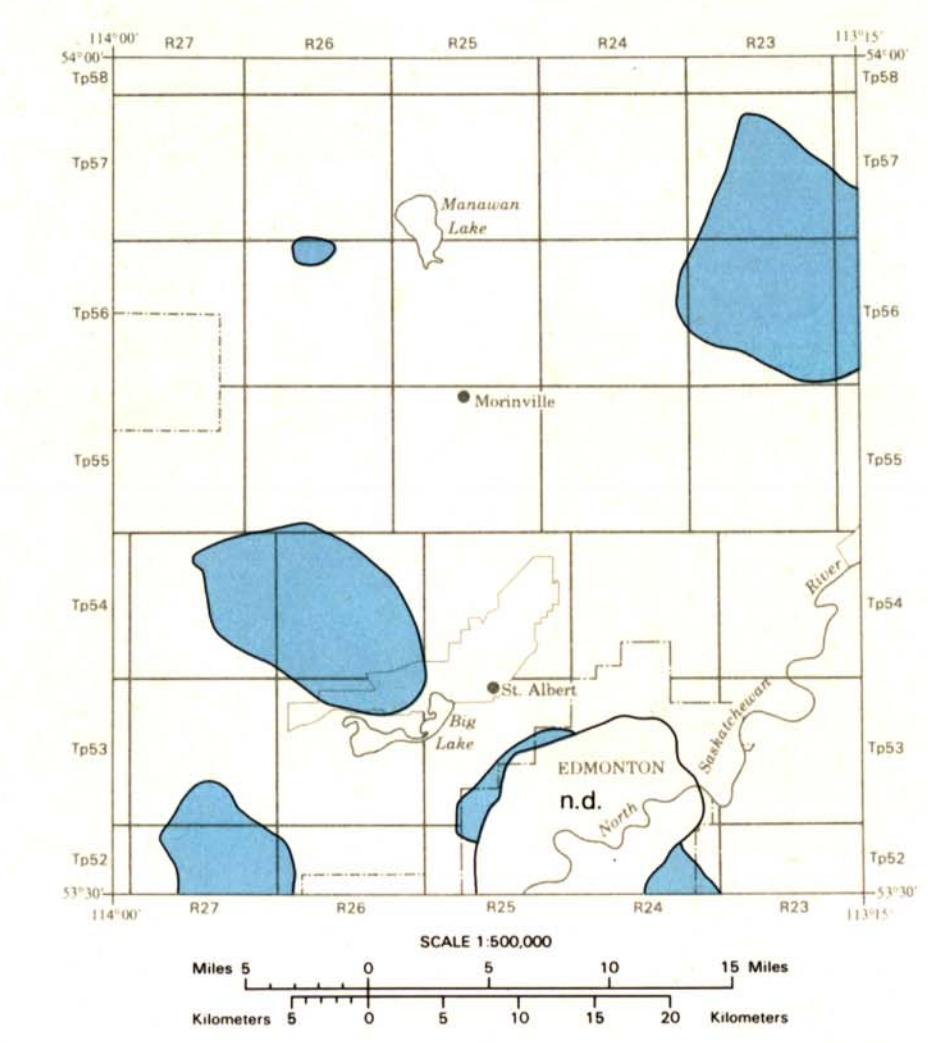


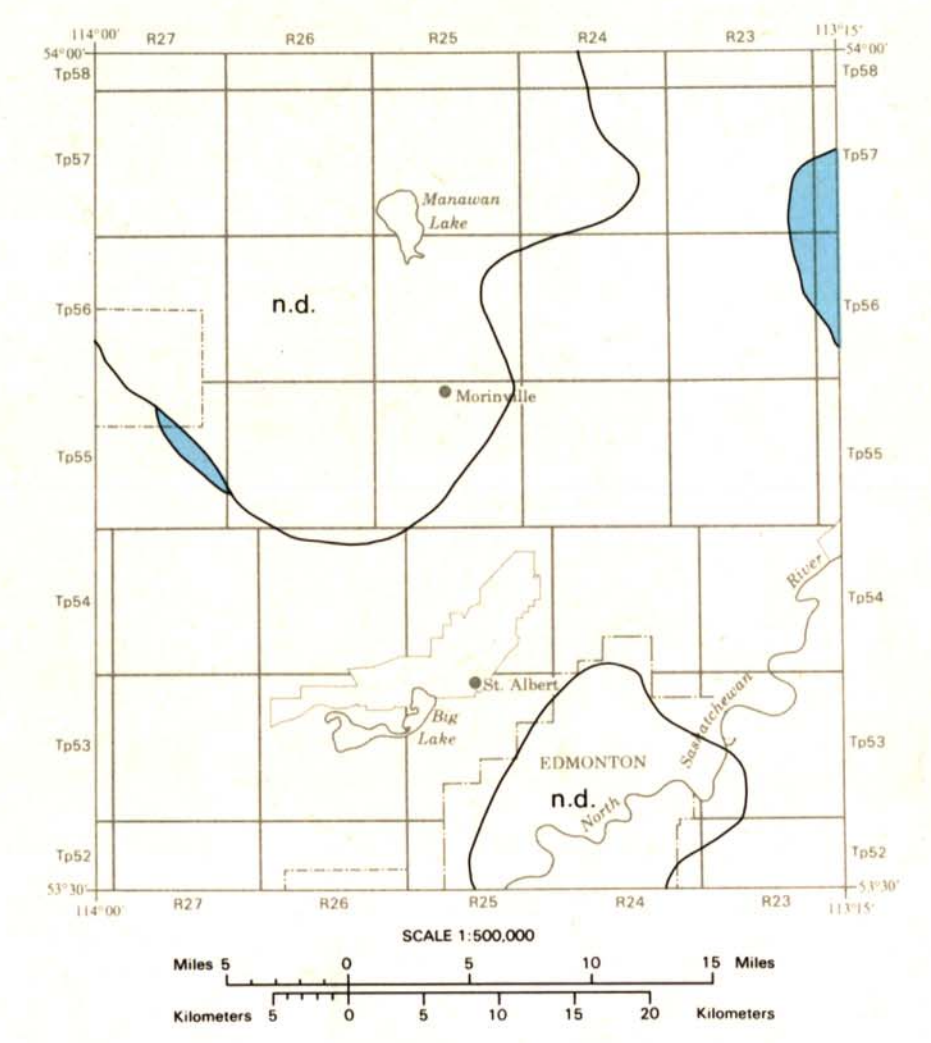
LEGEND



FLUORIDE CONTENT: BEDROCK

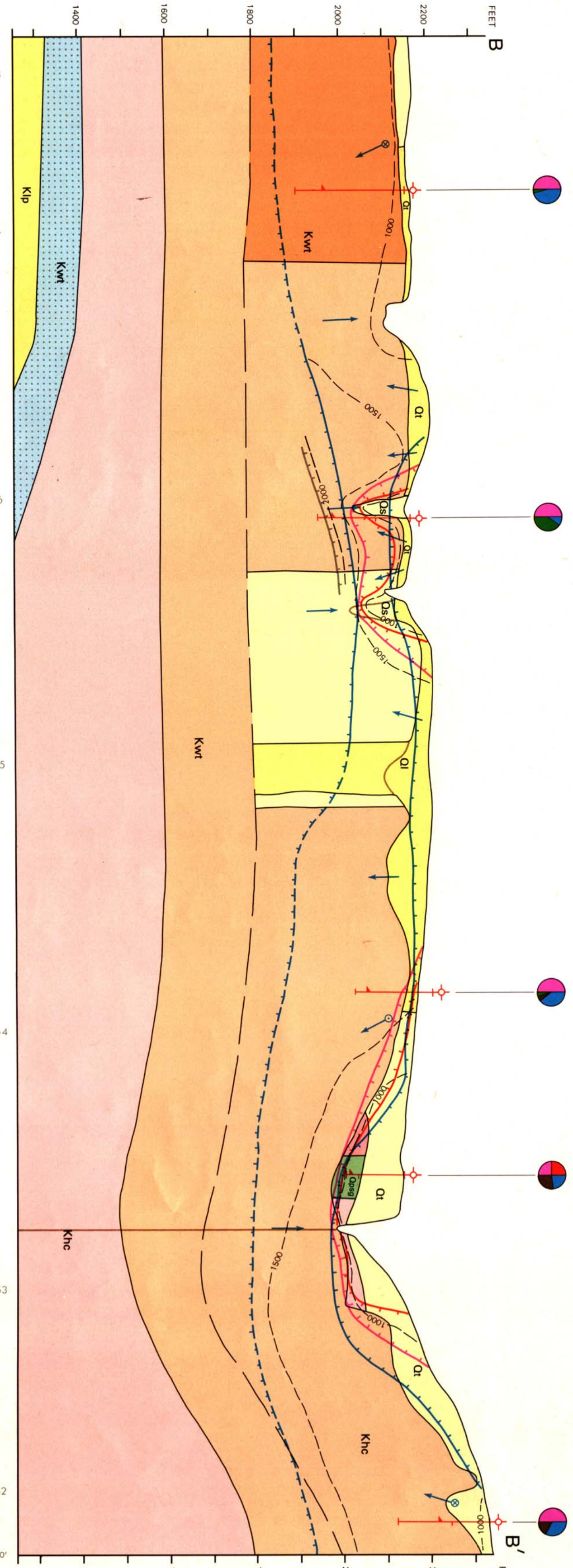
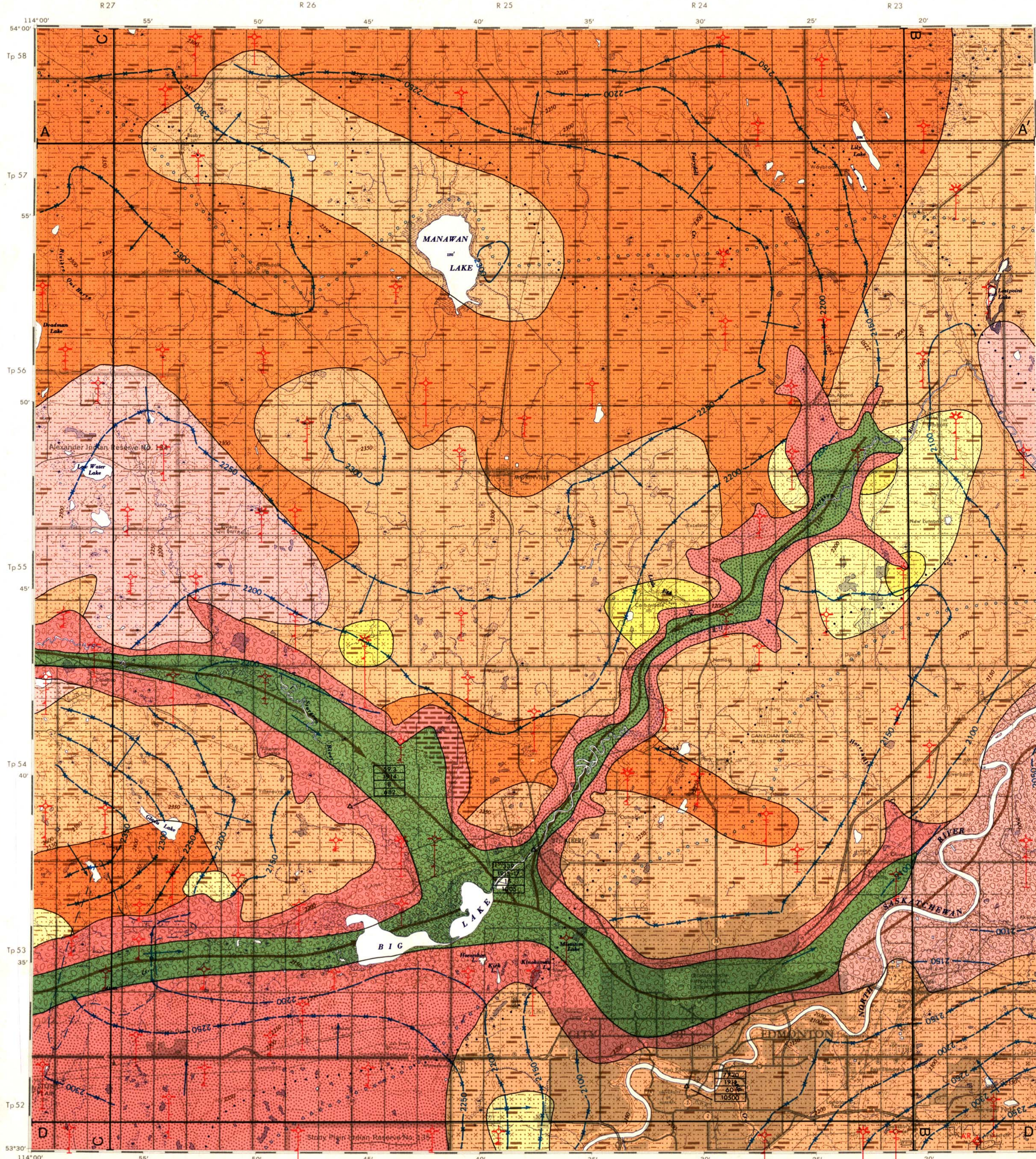
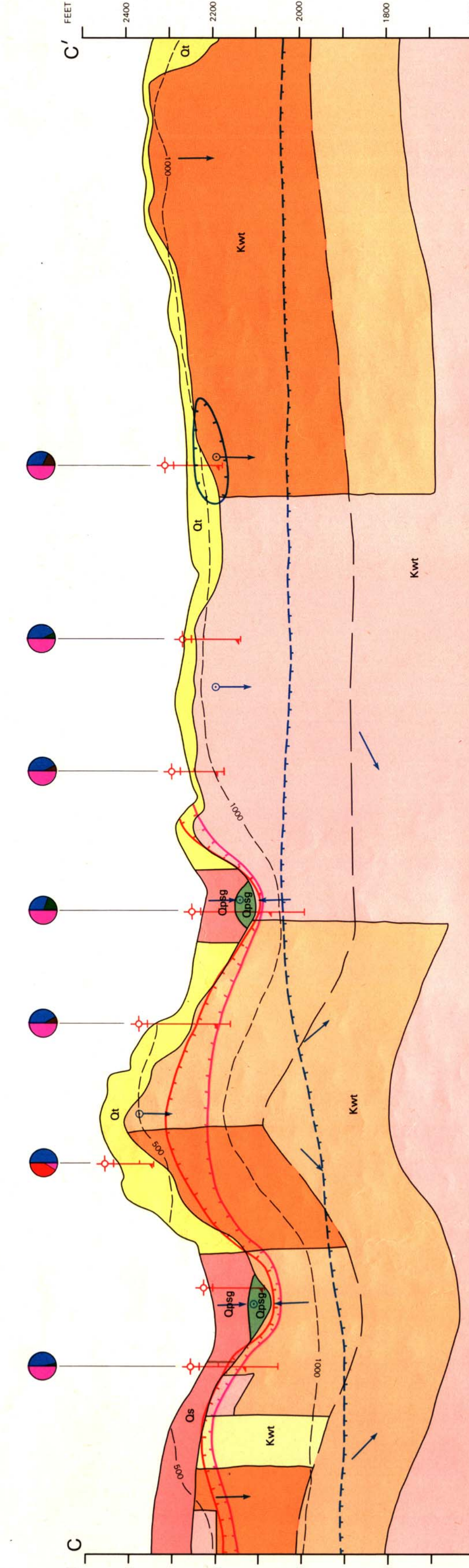
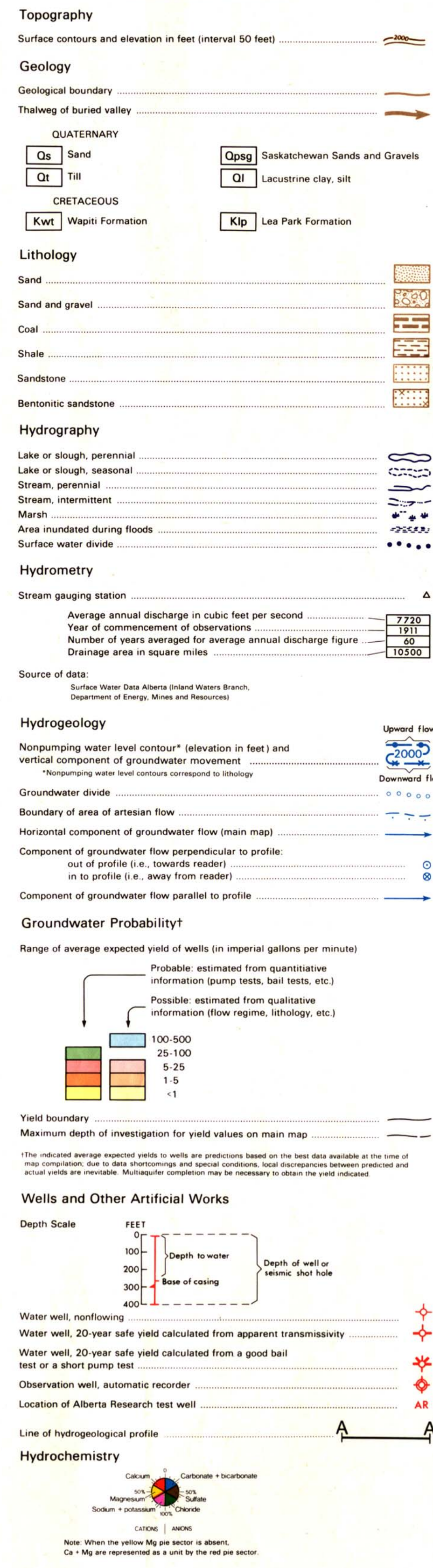


FLUORIDE CONTENT: DRIFT

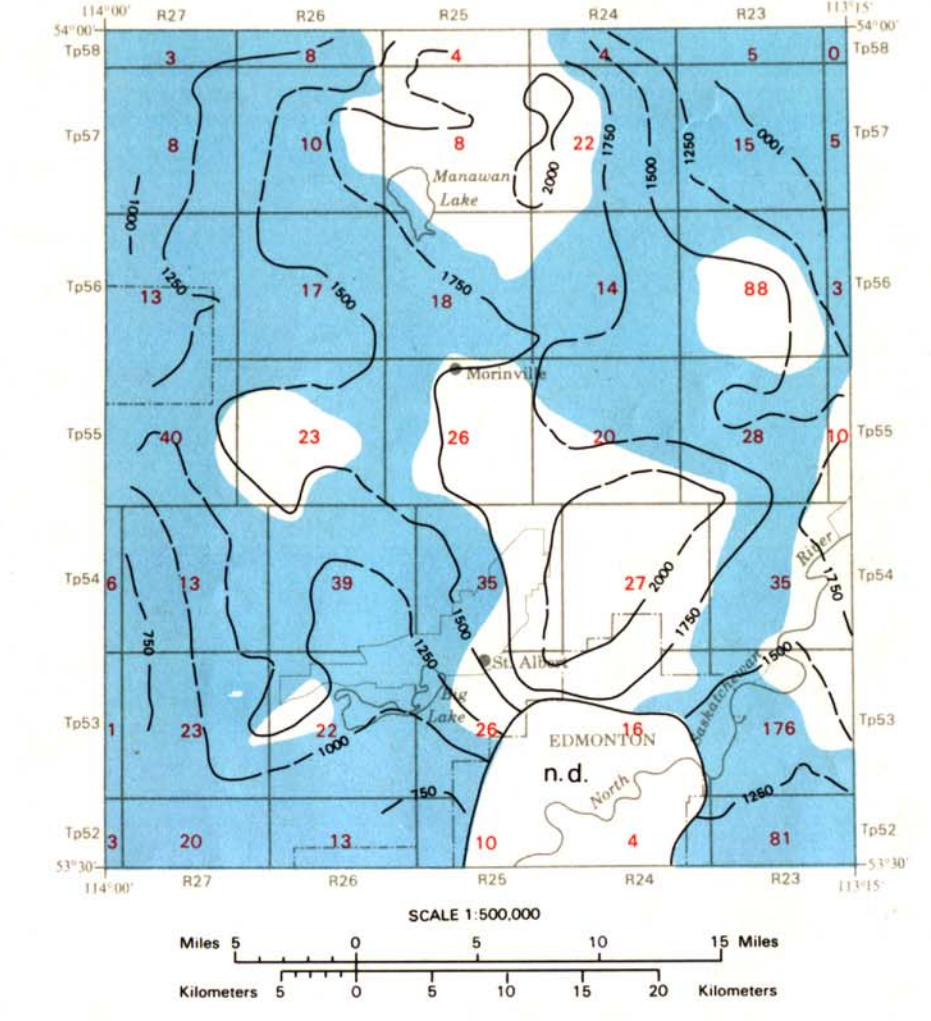


Fluoride content in parts per million:  
0.1-0.5  
0.5-1.0  
Area of no data

MAIN MAP LEGEND



HYDROCHEMISTRY: BEDROCK



Number of data points used in each township and range

Total dissolved solids in parts per million:

- defined
- approximate

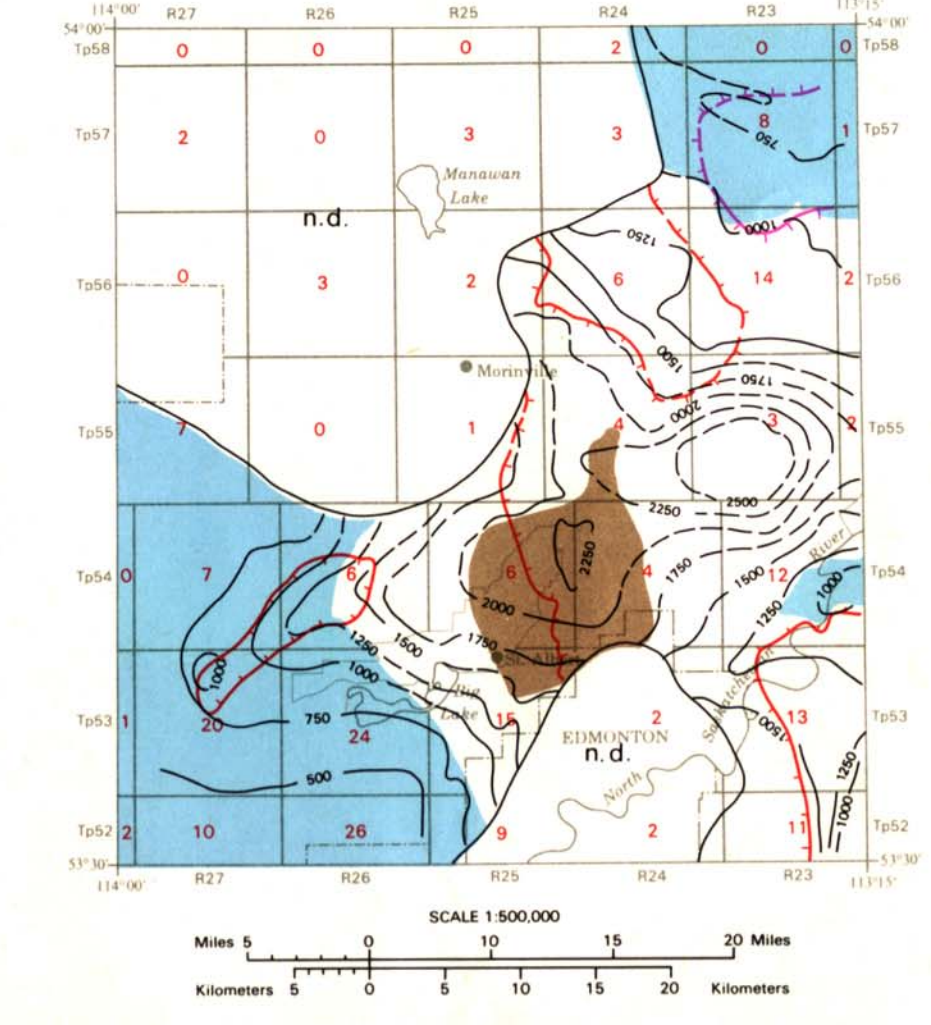
Carbonate + bicarbonate constituting over 60 percent of total anions\*

Area of no data

One extra map area where calcium + magnesium constitute less than 60 percent of total cations\* and sodium + potassium constitute more than 60 percent of total cations\*

\*Determined on equivalents per million basis.

HYDROCHEMISTRY: DRIFT



Number of data points used in each township and range

Total dissolved solids in parts per million:

- defined
- approximate

Sulfate constituting over 60 percent of total anions\*

Diagram along which calcium + magnesium constitute 60 percent of total cations\*

Diagram along which sodium + potassium constitute 60 percent of total cations\*

Diagram along which carbonate + bicarbonate constitute 60 percent of total anions\*

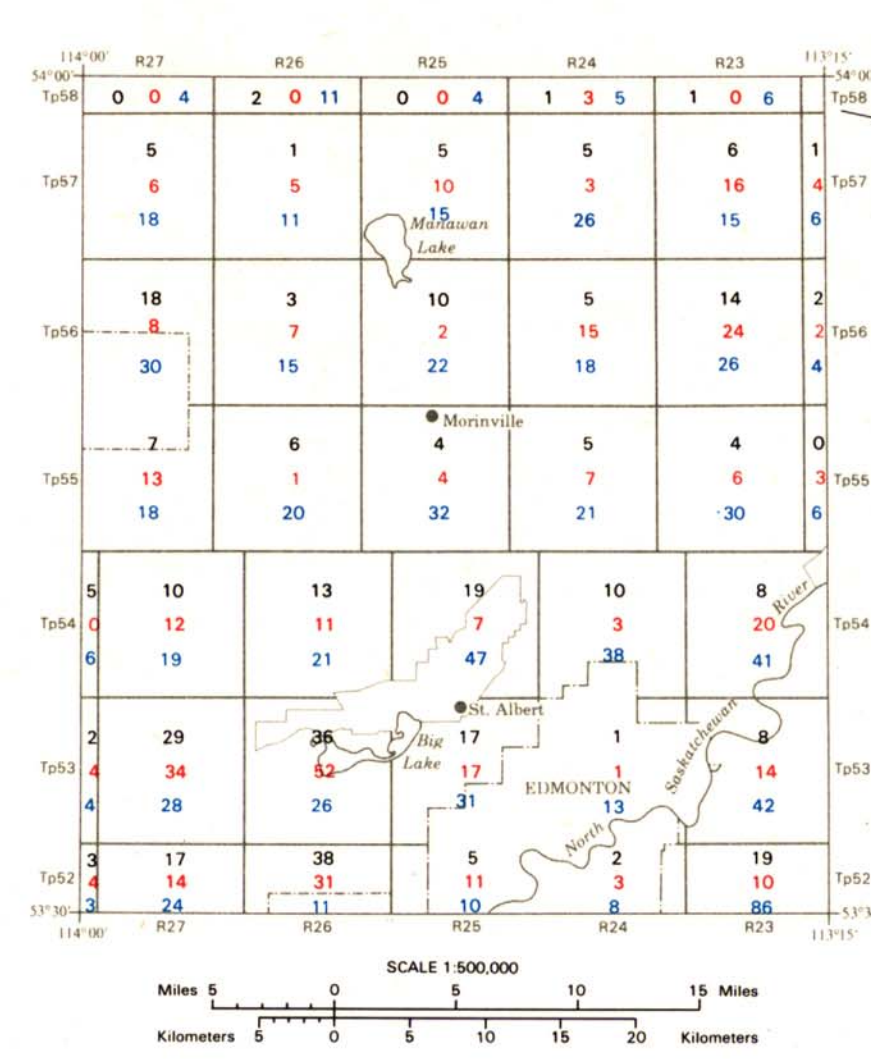
Diagram along which chloride constitutes 60 percent of total anions\*

Area of no data

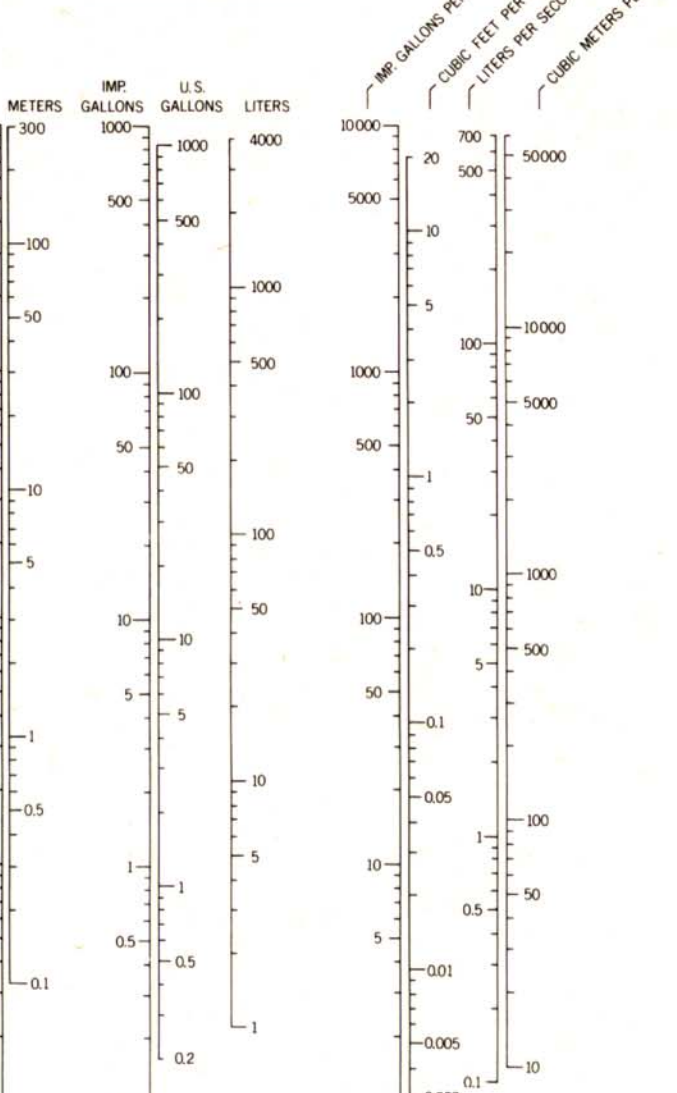
One extra map area where calcium + magnesium constitute less than 60 percent of total anions\*

\*Determined on equivalents per million basis.

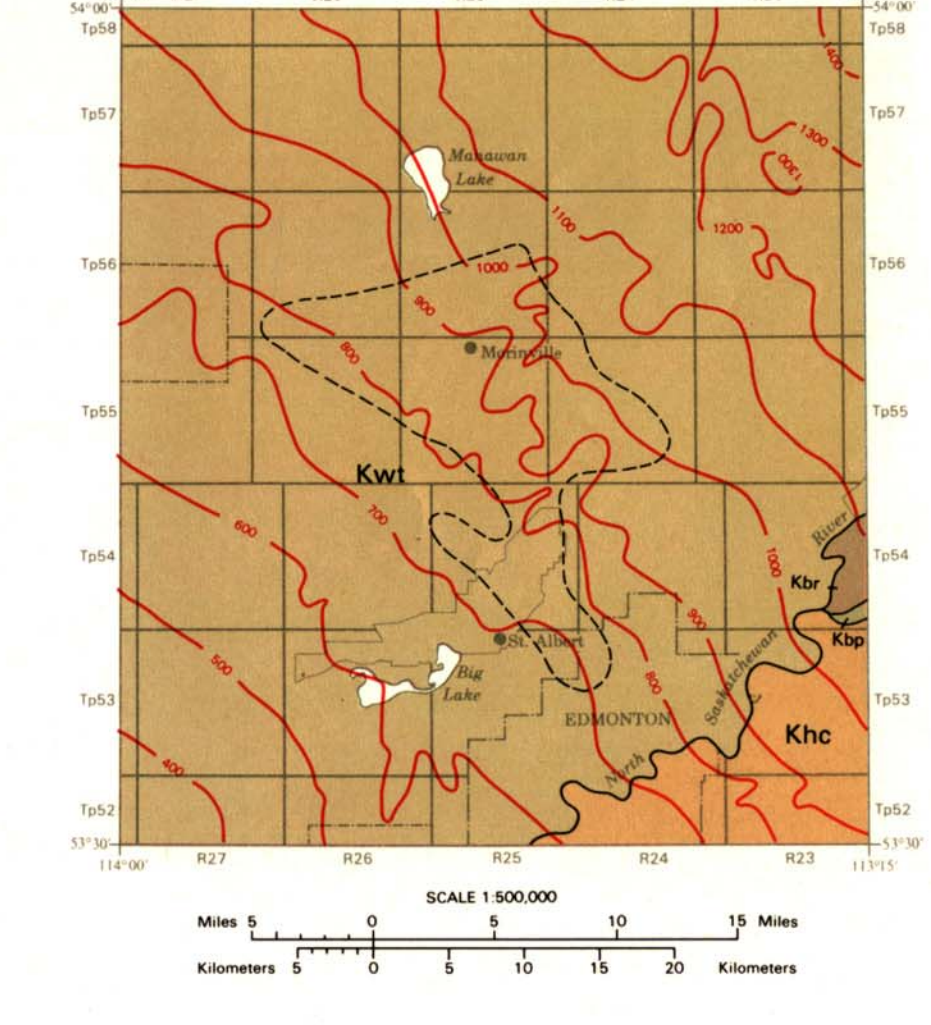
DATA DENSITY



CONVERSION TABLE



GEOLOGY



LEGEND

- Kwt Waskia Formation sandstone, mudstone, bentonitic coal beds
- Klp Lark Formation sandstone, siltstone, mudstone, shale, bentonitic beds, coal
- Ksp Bearpaw Formation shale, sandstone, thin sandstone and bentonite beds
- Kbr Belly River Formation sandstone, siltstone, mudstone, ironstone beds
- Rock unit boundary
- Structure contour on top of Lark Park Formation
- Area within which basal Belly River sandstone is absent

All elevations in feet above mean sea level.  
Vertical exaggeration of the hydrogeological profiles is approximately 50X.  
An expanded legend and explanatory notes for use with this hydrogeological map series is available from Alberta Research, Edmonton, Canada.  
Map to accompany Report 74-10.  
Hydrogeology by R. Bibby, 1973, based on data collected in 1972 and 1973.  
Drawn by R. Swenson and H. Dey.  
Cartographic editing by F. H. Smith and A. R. Campbell.

HYDROGEOLOGICAL MAP  
EDMONTON AREA  
(Northwest Segment)  
ALBERTA