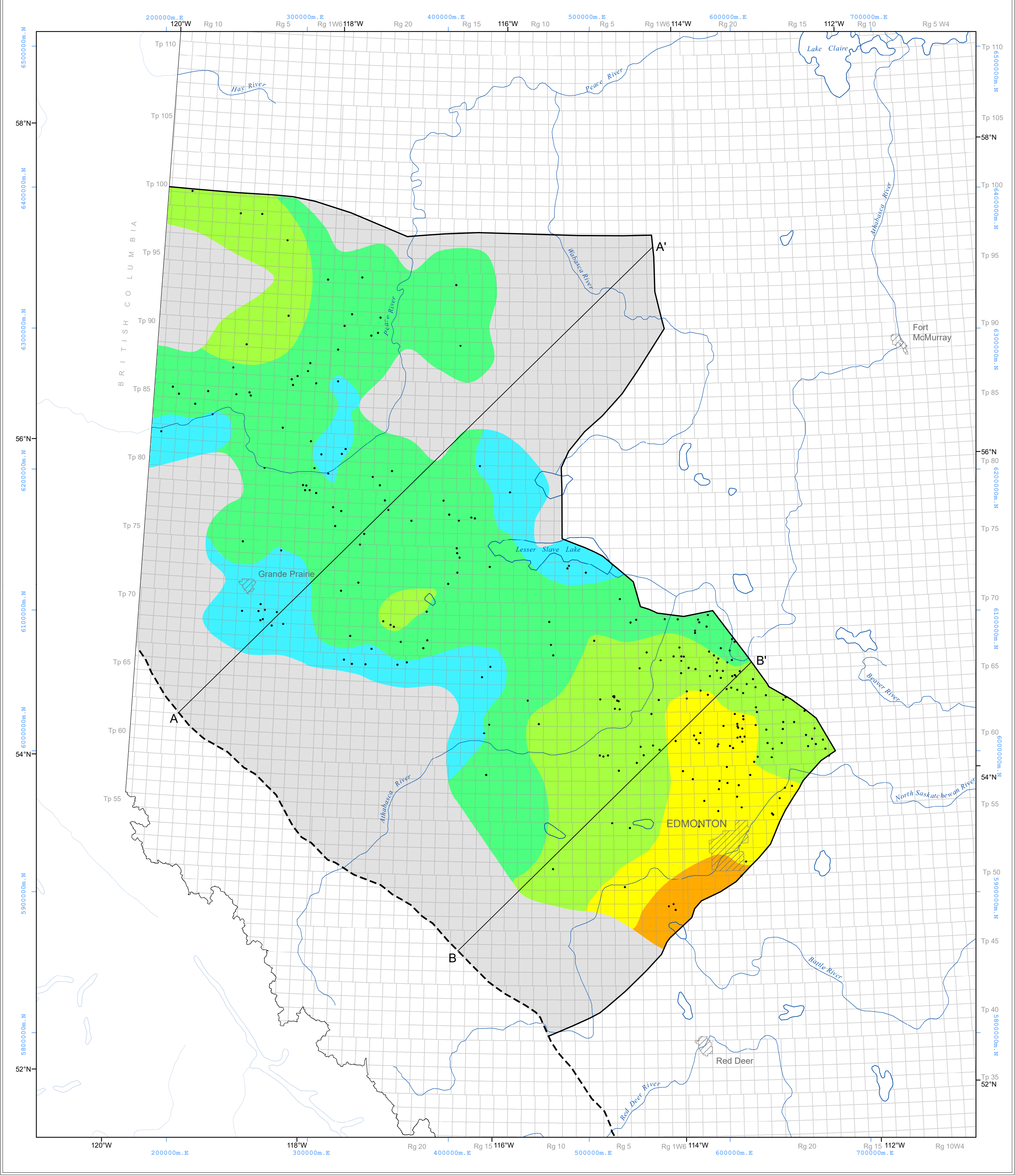


TOTAL DISSOLVED SOLIDS
SPIRIT RIVER HSU



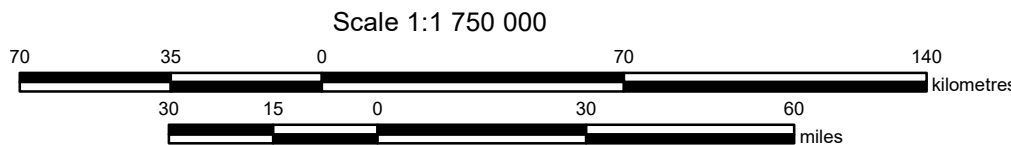
Alberta Geological Survey
<https://ags.aer.ca>

Published 2023
ISBN 978-1-4601-5368-0

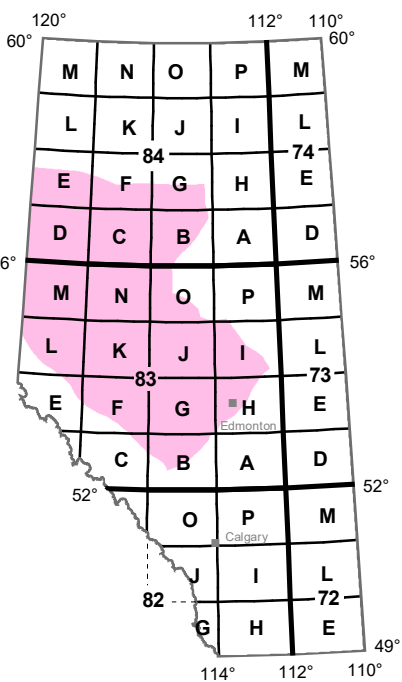
Map 636

**Distribution of Total Dissolved Solids in the
Spirit River Hydrostratigraphic Unit**

Hydrogeology by: C. Lucente and J. Brinsky

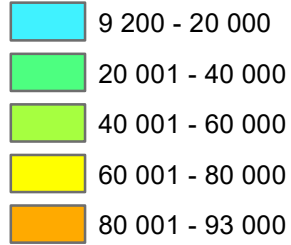


Projection: 10 Degree Transverse Mercator
Datum: North American Datum, 1983



SYMBOL LEGEND

Total dissolved solids (mg/L)



Well data point

Hydrostratigraphic unit extent

Eastern limit of main Cordilleran deformation

Cross-section line

Insufficient data

Well data point

Hydrostratigraphic unit extent

Eastern limit of main Cordilleran deformation

Cross-section line

Insufficient data

This map depicts the distribution of total dissolved solids (TDS) in groundwater in the Spirit River hydrostratigraphic unit (HSU). The horizontal and vertical extent of the unit was adopted from the Geological Framework of Alberta, Version 3 (Alberta Geological Survey, 2021). The relationship of the Spirit River HSU with the units above and below as well as its geometry can be seen in Figures 1 and 2.

Methodology

The TDS distribution map is a result of an empirical Bayesian kriging technique using publicly available data from 265 water chemistry analyses from oil and gas wells. A screening process modified from Jensen et al. (2013) was used to ensure that only representative formation water chemistries were used.

Measured TDS values range from 9 812 mg/L to 95 874 mg/L. The final gridded map surface was clipped based on the spatial distribution of representative chemistry data. Residual values are plotted at each location (Figure 3) to indicate where underprediction or overprediction occurs compared to the measured TDS values.

Additional formation-scale hydrogeological maps for the Spirit River HSU are shown in Figures 4 and 5. Figure 4 shows the distribution of hydraulic head in the Spirit River HSU. Figure 5 illustrates the water driving force (WDF) vector map. The WDF vector map allows identification of areas where the buoyancy effect of formation water density has the potential to change the inferred magnitude and direction of groundwater flow (Singh et al., 2017). Buoyancy does not not appear to have a significant effect on groundwater flow in the Spirit River HSU, except in the southern portion where larger angles (dark orange areas) between the WDF vector and hydraulic gradient vector are observed.

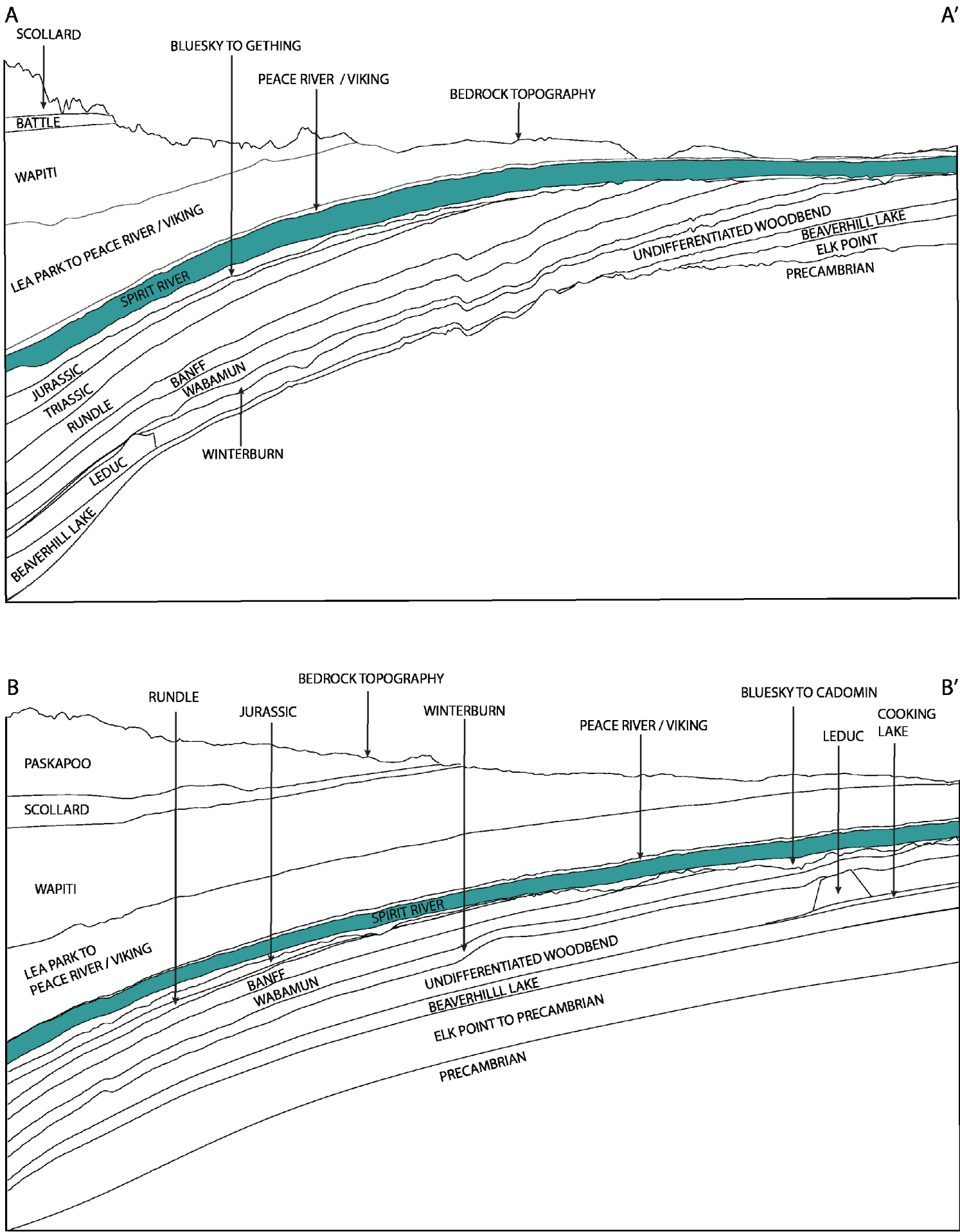


Figure 1. Schematic cross-sections identifying the geometry and variable thickness of the Spirit River HSU (not to scale). Jurassic and Triassic strata have not been subdivided at the scale of these cross-sections.

References

Alberta Geological Survey (2019): Alberta Table of Formations; Alberta Energy Regulator, URL <<https://ags.aer.ca/publication/alberta-table-formations>> [May 2021].

Alberta Geological Survey (2021): Geological Framework of Alberta, version 3 (interactive app and map, methodology, model, dataset, StoryMaps, web maps); Alberta Energy Regulator / Alberta Geological Survey, AER/AGS Interactive Application, URL <<https://gfa-v3-ags-aer.hub.arcgis.com>> [December 2021].

Jensen, G., Rostrom, B., Palombi, D. and Melnik, A. (2013): Saskatchewan Phanerozoic Fluids and Petroleum Systems project: hydrogeological mapping framework; in Summary of investigations 2013, v. 1, Saskatchewan Geological Survey, Saskatchewan Ministry of the Economy, Miscellaneous Report 2013-4.1, Paper A-5,10 p.

Lucente, C. and Brinsky, J. (2023): Distribution of hydraulic head in the Spirit River hydrostratigraphic unit; Alberta Energy Regulator / Alberta Geological Survey, AER/AGS Map 637, scale 1:1 750 000.

Natural Resources Canada (2012): CanVec digital topographic data; Natural Resources Canada, Earth Sciences Sector, URL <<https://open.canada.ca/data/en/dataset/8ba2aa2a-7bb9-4448-b4d7-f164409fe056>> [September 2020].

Singh, A., Palombi, D., Nakevska, N., Jensen, G. and Rostrom, B. (2017): An efficient approach for characterizing basin-scale hydrodynamics; Marine and Petroleum Geology, v. 84, p. 332-340, URL <<http://dx.doi.org/10.1016/j.marpetgeo.2017.02.015>>.

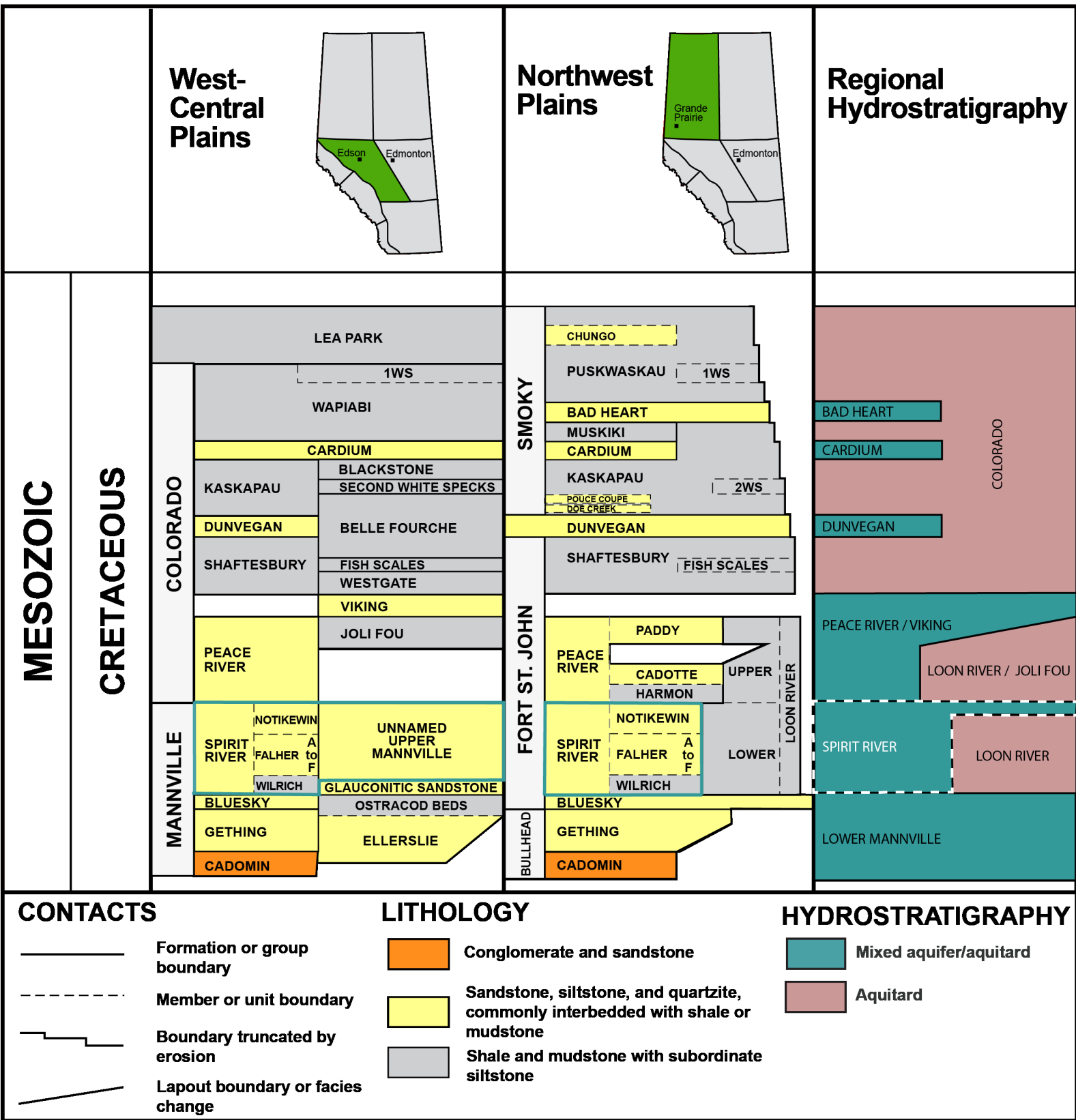


Figure 2. Regional lithostratigraphy and hydrostratigraphy (based on Alberta Geological Survey, 2019). Solid teal lines highlight the Spirit River Formation. Dashed white lines depict the Spirit River HSU within the regional hydrostratigraphy. Strata above the Lea Park Formation and below the Cadomin Formation are not shown.

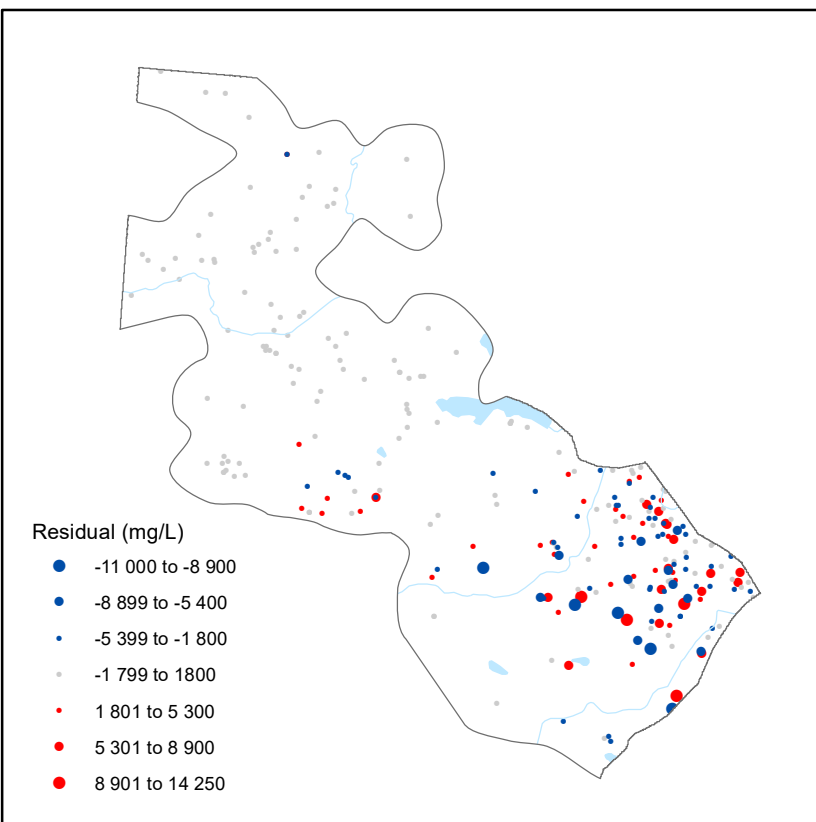


Figure 3. Calculated residuals between the modelled distribution of TDS and measured values. Symbol classes are based on the standard deviation of the calculated residuals.

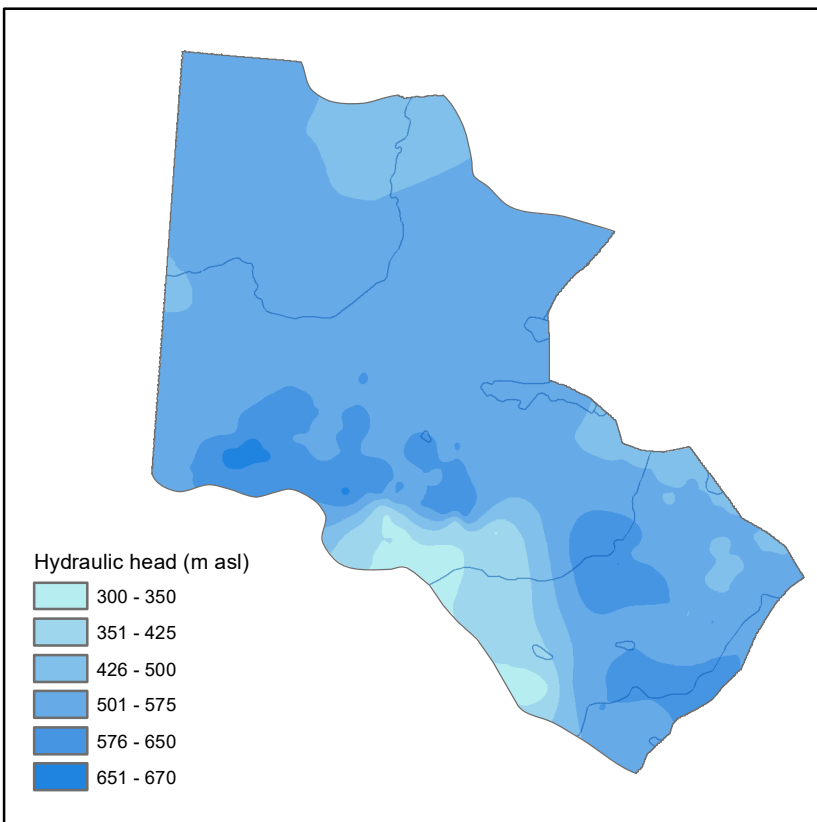


Figure 4. Distribution of hydraulic head in the Spirit River HSU (Lucente and Brinsky, 2023). The map extent is based on the spatial distribution of TDS data and differs from the extent of the main map.

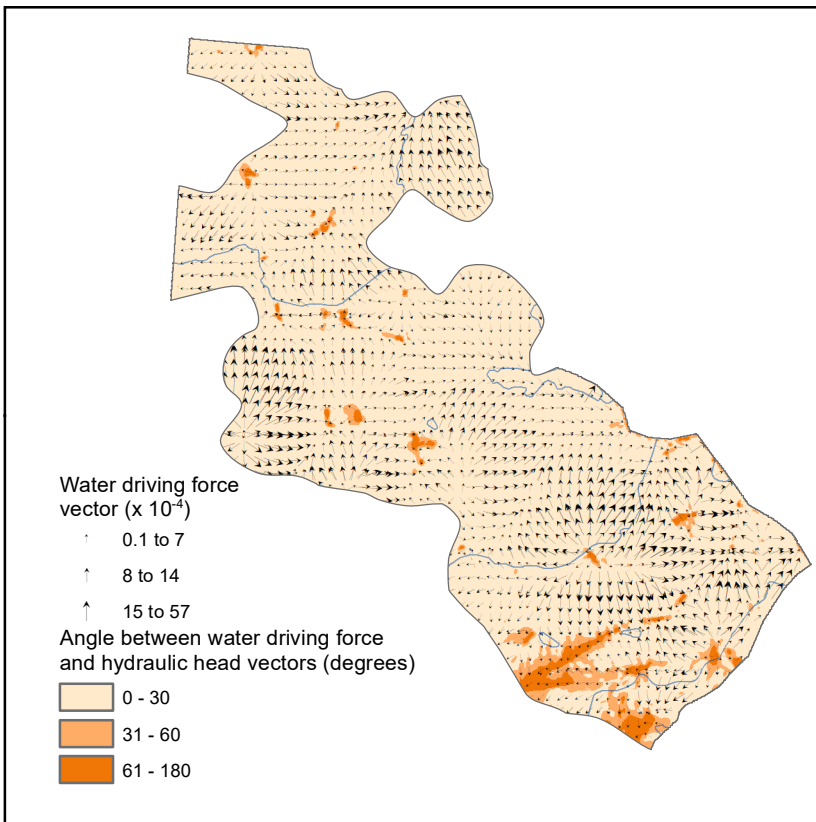


Figure 5. Water driving force vector map of the Spirit River HSU. The map only covers the area where hydraulic head and TDS gridded surfaces overlap.

Acknowledgements

Base data from the Atlas of Canada (Natural Resources Canada, 2012) and Spatial Data Warehouse Ltd.

Recommended Reference Format

Lucente, C. and Brinsky, J. (2023): Distribution of total dissolved solids in the Spirit River hydrostratigraphic unit; Alberta Energy Regulator / Alberta Geological Survey, AER/AGS Map 636, scale 1: 1 750 000.

Disclaimer

The Alberta Geological Survey and its employees and contractors make no warranty, guarantee or representation, express or implied, or assume any legal liability regarding the correctness, accuracy, completeness, or reliability of the publication. When using information from this publication in other publications or presentations, due acknowledgement should be given to the Alberta Energy Regulator / Alberta Geological Survey.