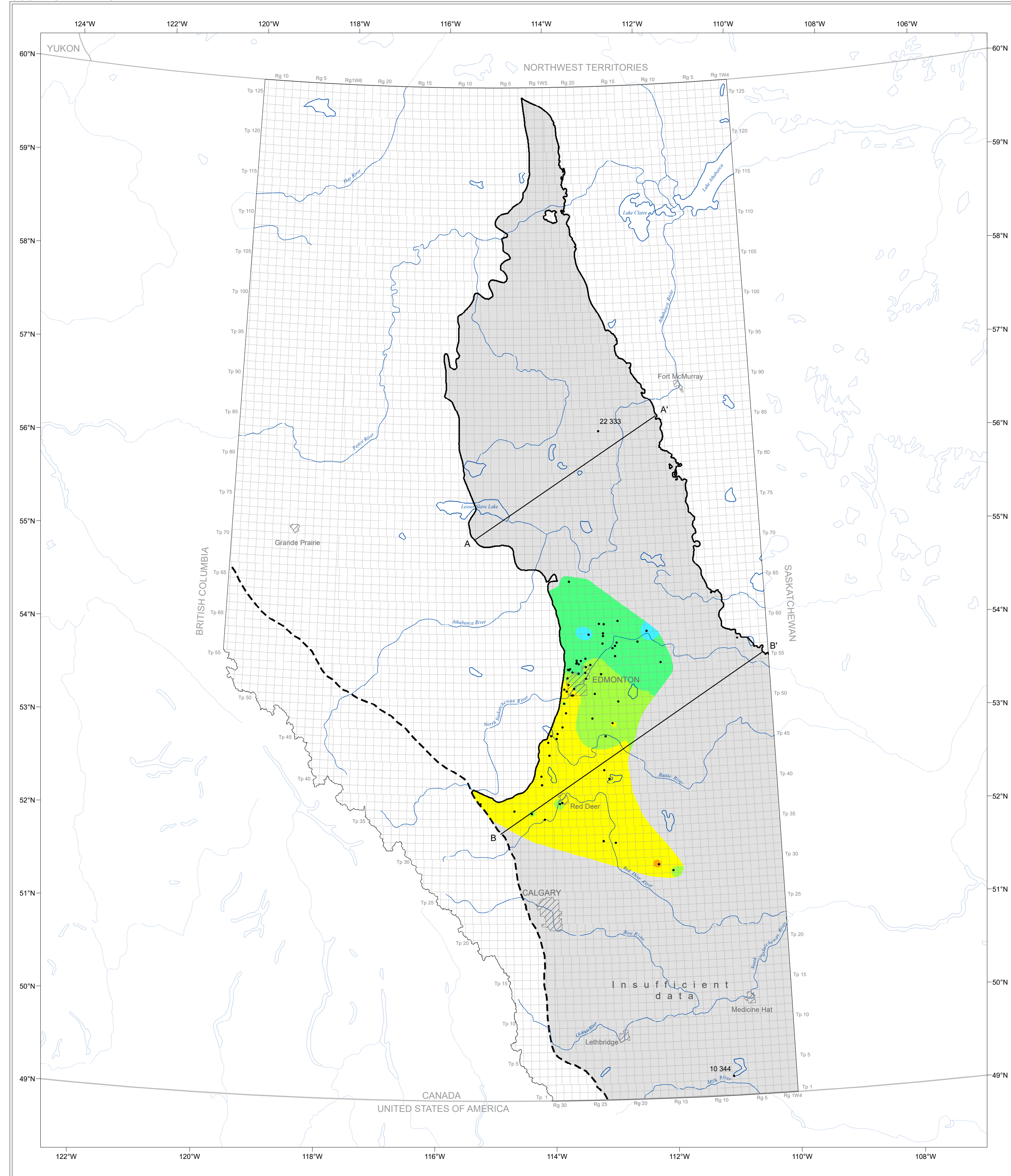


TOTAL DISSOLVED SOLIDS
COOKING LAKE HSU



SYMBOL LEGEND



This map depicts the distribution of total dissolved solids (TDS) in groundwater in the Cooking Lake hydrostratigraphic unit (HSU). The horizontal and vertical extent of the unit was adopted from the 3D Provincial Geological Framework Model of Alberta, Version 2 (Alberta Geological Survey, 2019a). The relationship of the Cooking Lake HSU with the units above and below as well as its geometry can be seen in Figures 1 and 2.

Methodology

The TDS distribution map is a result of an empirical Bayesian kriging technique using publicly available data from 67 formation water chemistry analyses from oil and gas wells. A screening process modified from Jensen et al. (2013) was used to ensure that only representative formation water chemistries were used. Measured TDS values range from 10 344 mg/L to 269 712 mg/L. The final gridded map surface was clipped based on the spatial distribution of representative data. Where data density was insufficient to generate a TDS grid, points are plotted with TDS values only. Residual values are plotted at each location (Figure 3) to indicate where underprediction or overprediction occurs compared to the measured TDS values.

Additional formation-scale hydrogeological maps for the Cooking Lake HSU are shown in Figures 4 and 5. Figure 4 illustrates the distribution of hydraulic head in the Cooking Lake HSU, with hydraulic heads calculated using fresh water density. Figure 5 shows the water driving force (WDF) vector map for the Cooking Lake HSU. The WDF vector map allows identification of areas where the buoyancy effect of formation water density has the potential to change the inferred magnitude and direction of groundwater flow (Singh et al., 2017). For the majority of the Cooking Lake HSU, buoyancy does not appear to have a significant effect on groundwater flow. However, buoyancy may have some influence in the dark orange areas where larger angles between the WDF vector and hydraulic gradient vector are observed.

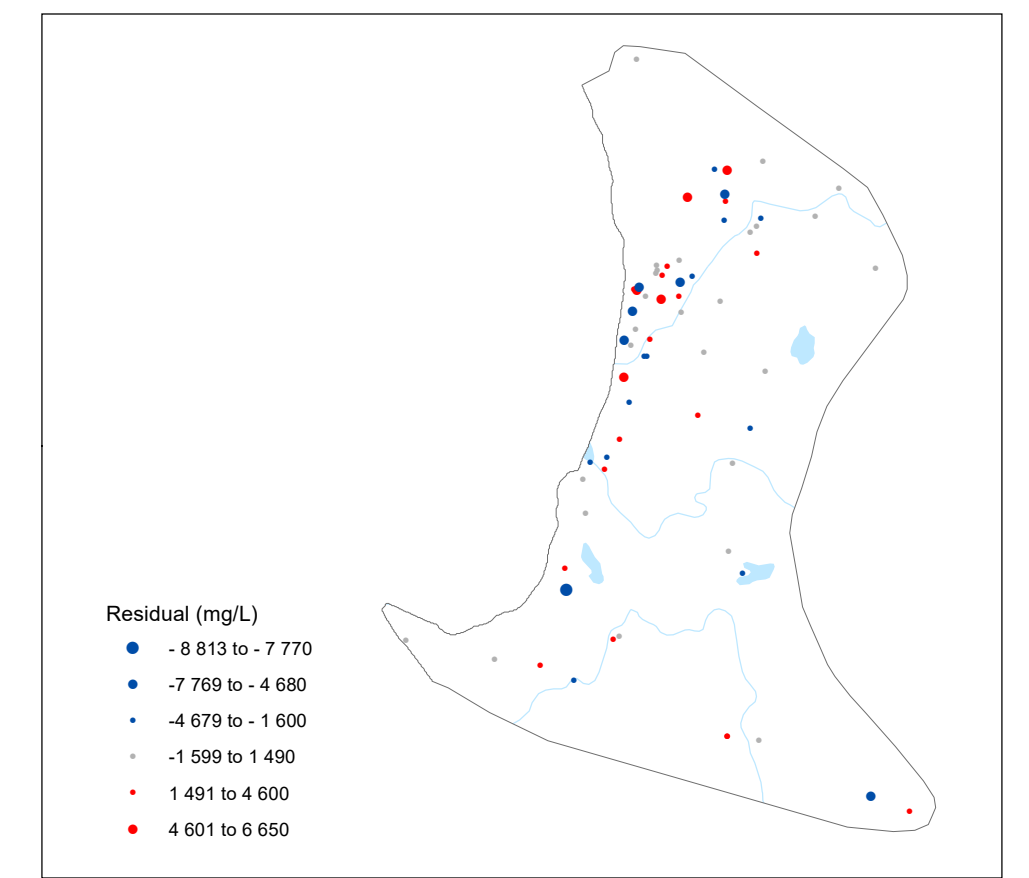


Figure 3. Calculated residuals between the modelled distribution of TDS and measured values. Symbol classes are based on the standard deviation of the calculated residuals.

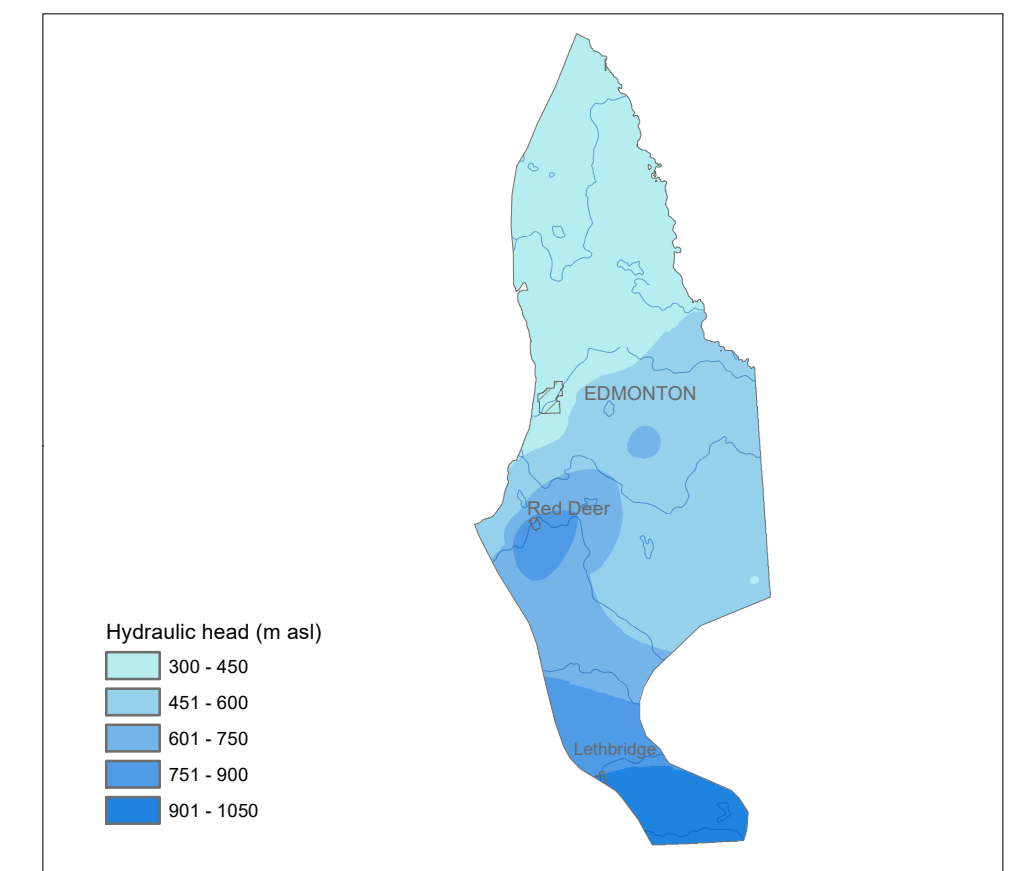


Figure 4. Distribution of hydraulic head in the Cooking Lake HSU (Brinsky, 2022). The map extent is based on the spatial distribution of hydraulic head data and differs from the extent of the main map.

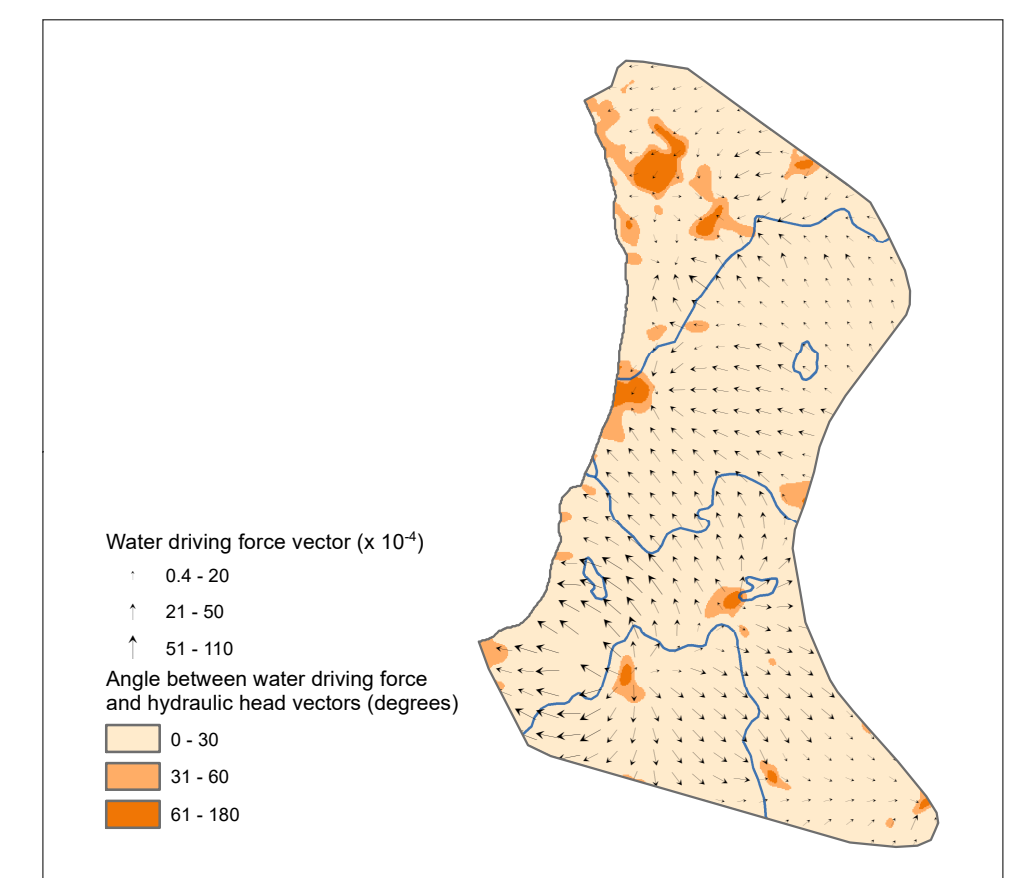


Figure 5. Water driving force vector map of the Cooking Lake HSU. The map covers only the area where hydraulic head and TDS gridded surfaces overlap.

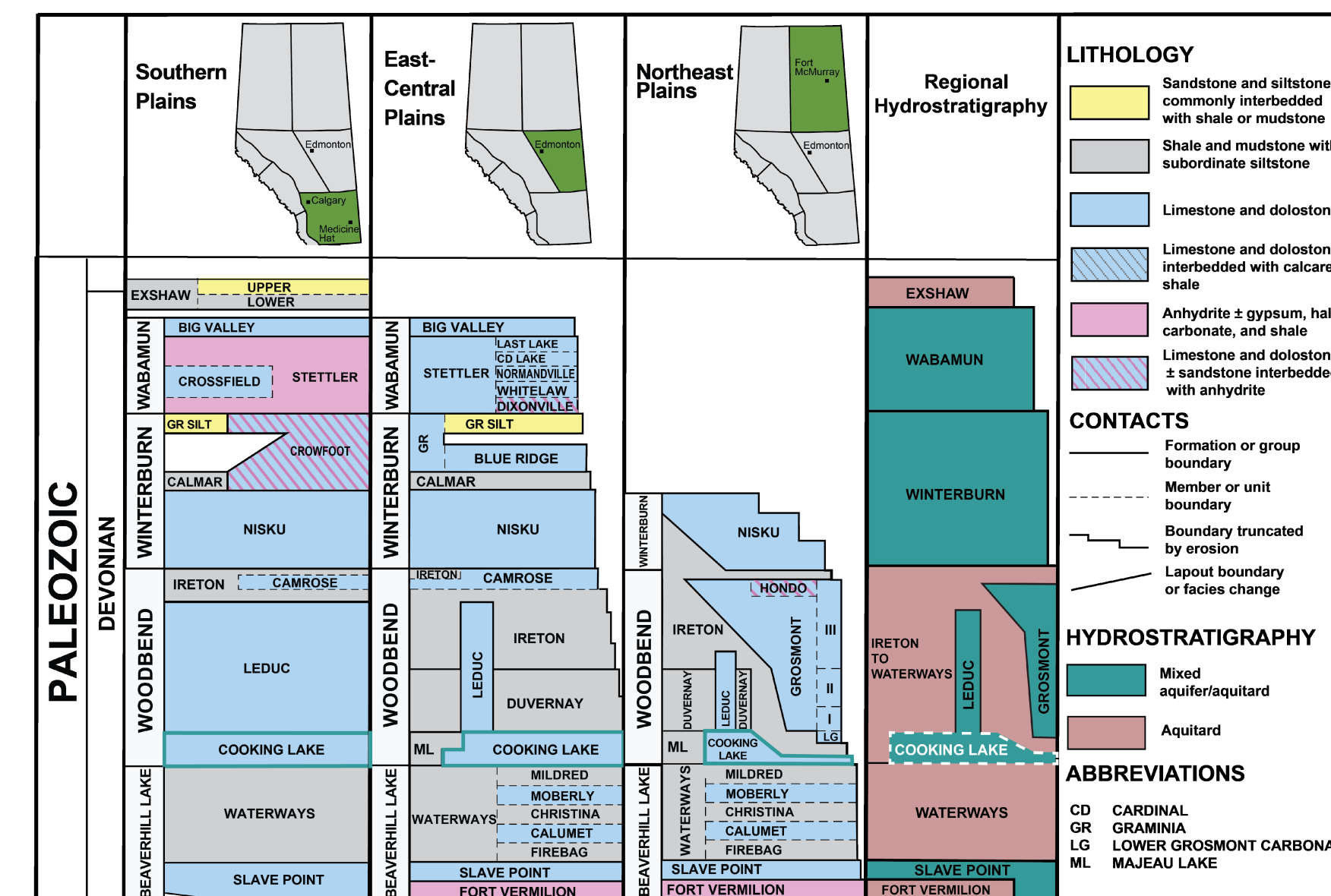


Figure 1. Regional lithostratigraphy and hydrostratigraphy (based on Alberta Geological Survey, 2019b). Solid teal lines highlight the Cooking Lake Formation. Dashed white lines depict the Cooking Lake HSU within the regional hydrostratigraphy. Strata above the Exshaw Formation and below the Beaverhill Lake Group are not shown.

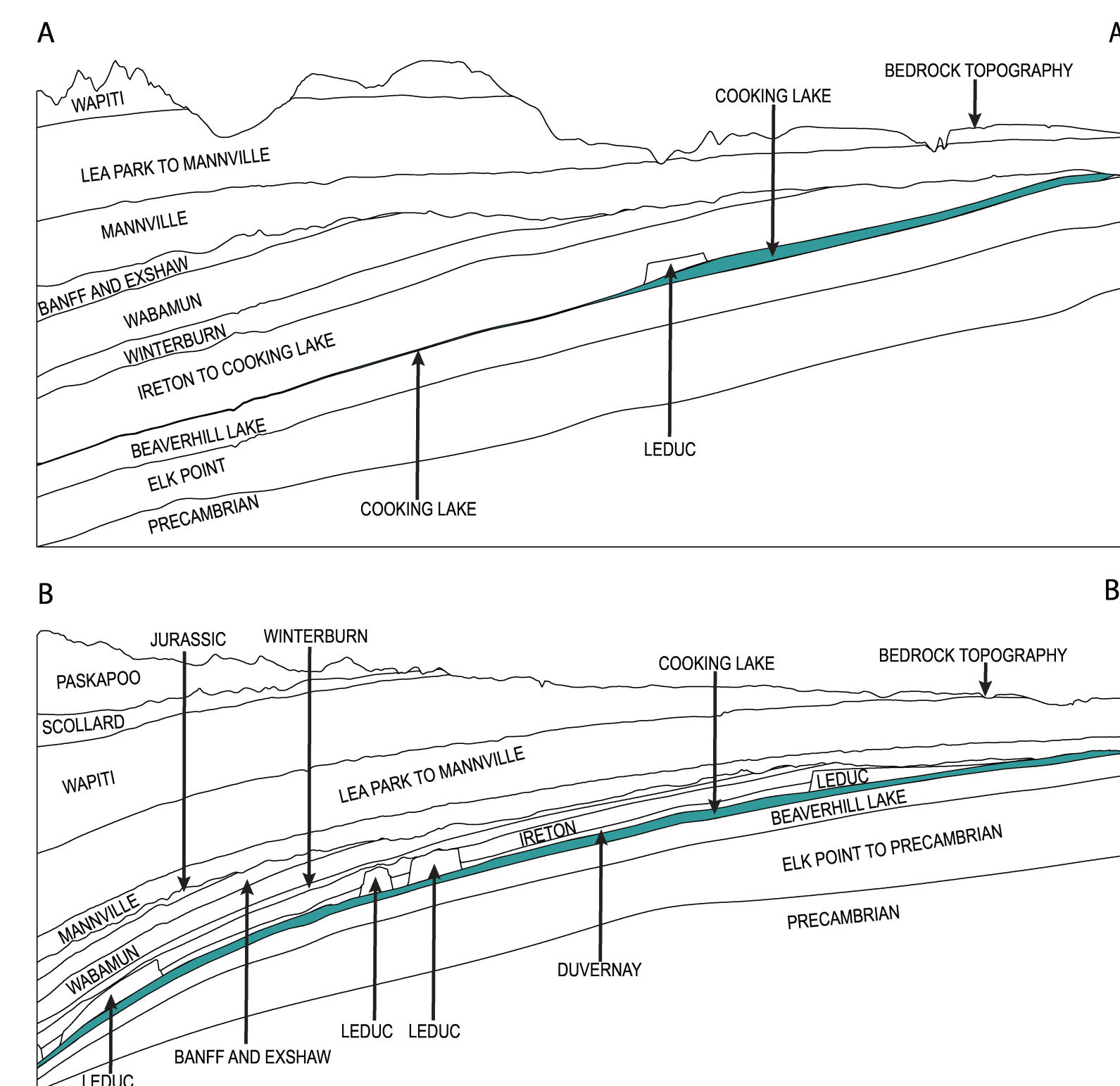


Figure 2. Schematic cross-sections identifying the geometry and variable thickness of the Cooking Lake HSU (not to scale). Jurassic strata have not been subdivided in this cross-section.

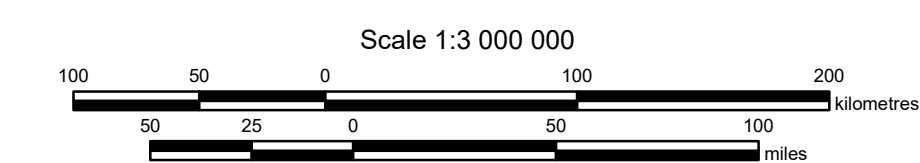
Alberta Geological Survey
www.ags.aer.ca

Published 2022
ISBN 978-1-4601-4945-4

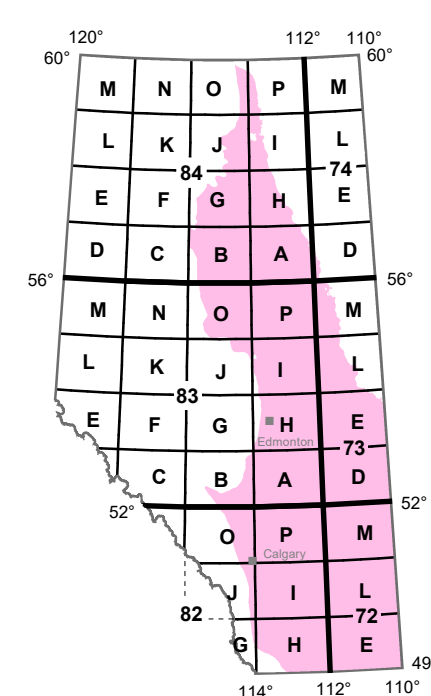
Map 617

Distribution of Total Dissolved Solids in the
Cooking Lake Hydrostratigraphic Unit

Hydrogeology by: J. Brinsky



Projection: 10 Degree Transverse Mercator
Datum: North American Datum, 1983



Acknowledgements

Data processing support by S. Stewart. Base data from the Atlas of Canada (Natural Resources Canada, 2012) and Spatial Data Warehouse, Ltd. Water driving force vector map created by A. Singh.

References

- Alberta Geological Survey (2019a): 3D Provincial Geological Framework Model of Alberta, version 2, Alberta Energy Regulator / Alberta Geological Survey, AER/AGS Model 2018-02, URL <https://ags.aer.ca/publication/3d-pgf-model-v2.html> [November 2020].
- Alberta Geological Survey (2019b): Alberta Table of Formations; Alberta Energy Regulator, URL <https://ags.aer.ca/publications/table_of_formations_2019.html> [October 2019].
- Brinsky, J. (2022): Distribution of hydraulic head in the Cooking Lake hydrostratigraphic unit; Alberta Energy Regulator / Alberta Geological Survey, AER/AGS Map 616, scale 1:3 000 000.
- Jensen, G.K.S., Rostron, B., Palombi, D. and Melnik, A. (2013): Saskatchewan Phanerozoic Fluids and Petroleum Systems project: hydrogeological mapping framework. In: Summary of investigations 2013, v.1, Saskatchewan Geological Survey, Saskatchewan Ministry of the Economy, Miscellaneous Report 2013-4.1, Paper A-5.10, p.
- Natural Resources Canada (2012): CanVec digital topographic data; Natural Resources Canada, Earth Sciences Sector, URL <https://open.canada.ca/data/en/dataset/8ba2a2a-7bb9-4448-b4d7-164409fe056>.
- Singh, A., Palombi, D., Nakevska, N., Jensen, G. and Rostron, B. (2017): An efficient approach for characterizing basin-scale hydrodynamics; Marine and Petroleum Geology, p. 332-340, URL <https://dx.doi.org/10.1016/j.marpetgeo.2017.02.015>.

Recommended Reference Format

Brinsky, J. (2022): Distribution of total dissolved solids in the Cooking Lake hydrostratigraphic unit; Alberta Energy Regulator / Alberta Geological Survey, AER/AGS Map 617, scale 1:3 000 000.

Disclaimer

The Alberta Geological Survey and its employees and contractors make no warranty, guarantee or representation, express or implied, or assume any legal liability regarding the correctness, accuracy, completeness, or reliability of the publication. When using information from this publication in other publications or presentations, due acknowledgement should be given to the Alberta Energy Regulator / Alberta Geological Survey.