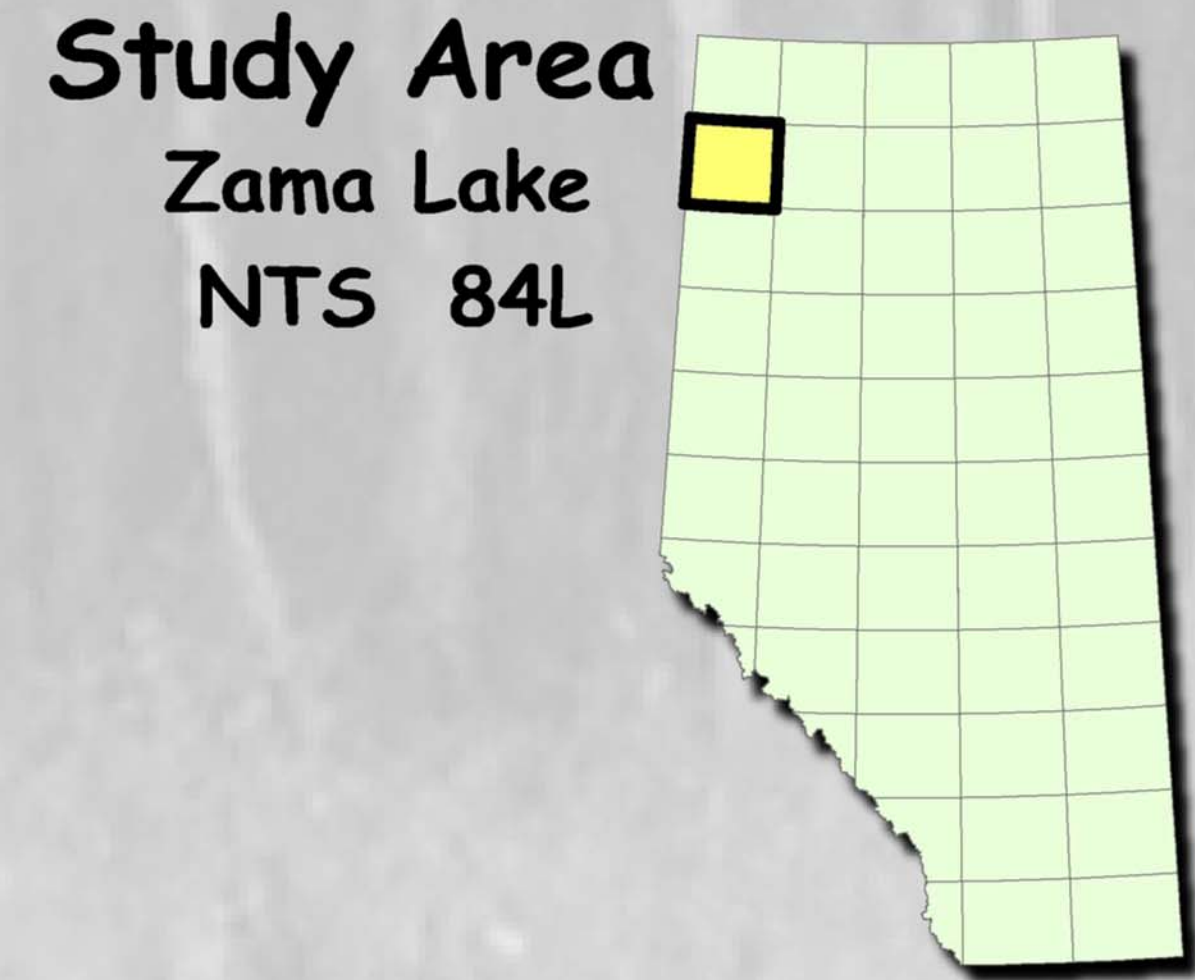
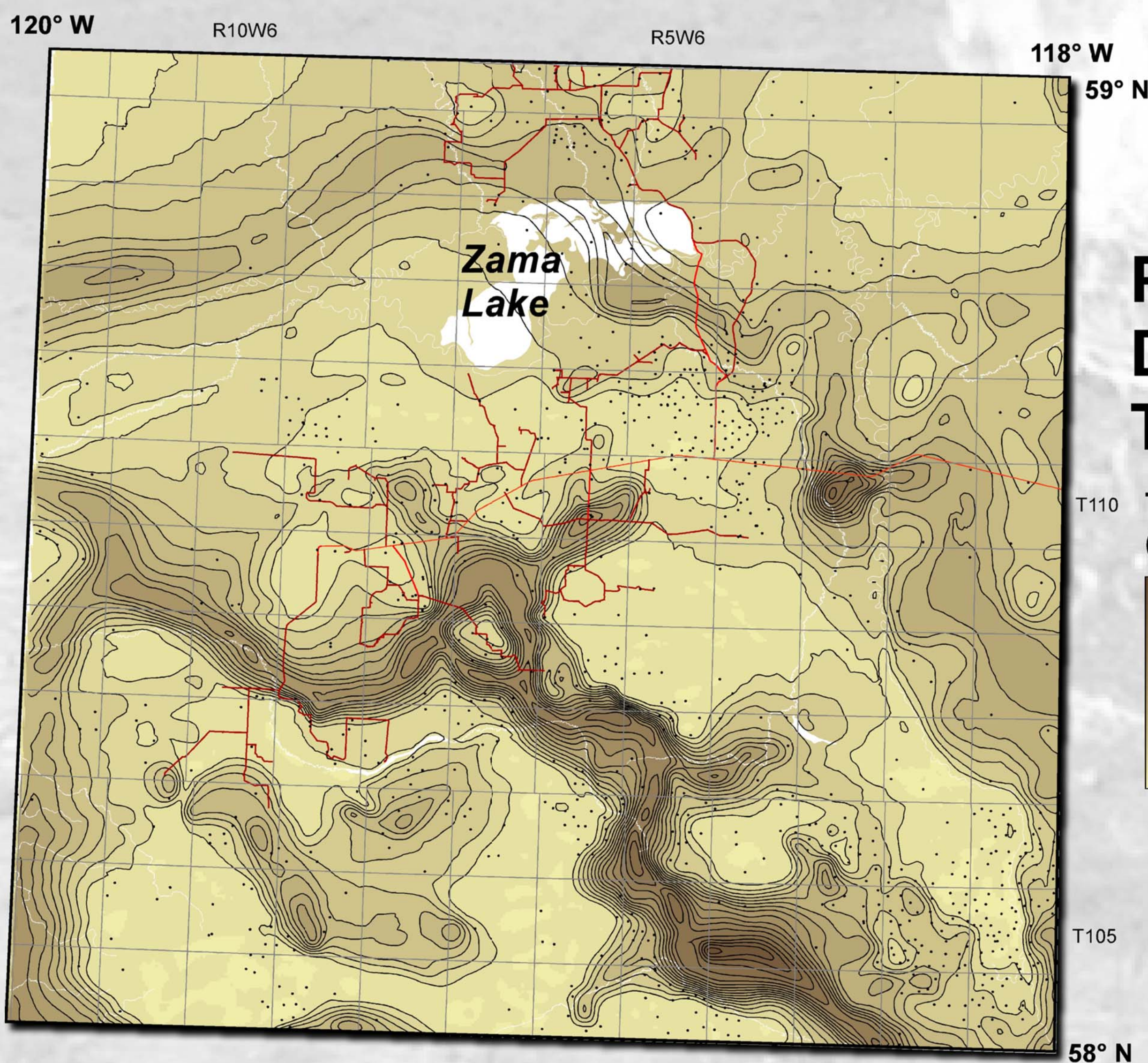


Preliminary Bedrock Topography



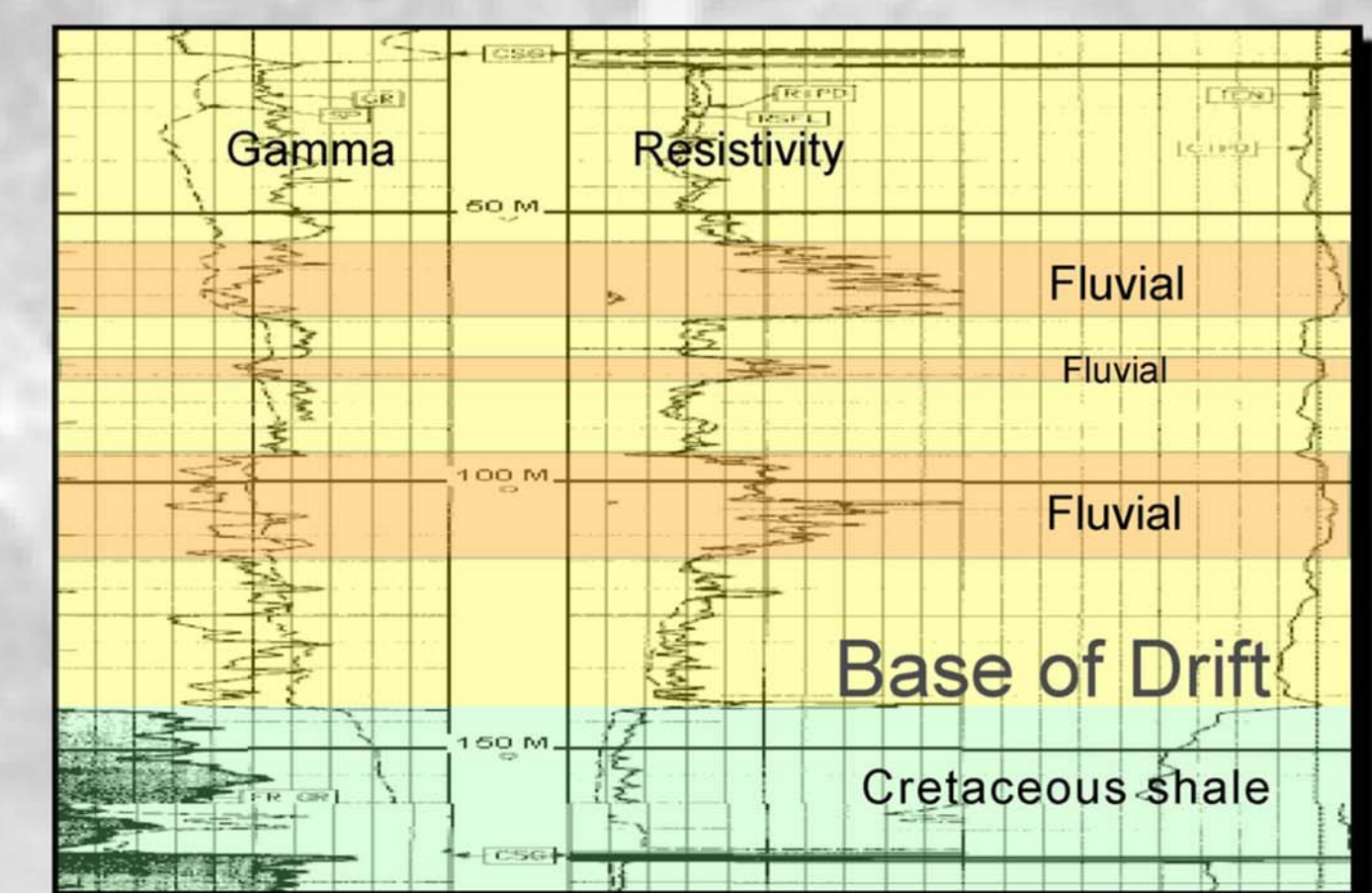
'Hot Pot' Natural Gas Seep



Preliminary Drift Thickness



Gas-Producing Well in Drift



Potential Gas Zones in Drift

Recommended Reference

Pawlowicz, J.G., Hickin, A.S., Nicoll, T.J., Fenton, M.M., Paulen, R.C., Plouffe, A. and Smith, I.R. (2004): Shallow gas in drift: northwestern Alberta; Alberta Energy and Utilities Board, EUB/AGS Information Series 130.

Additional copies are available from

Alberta Geological Survey, 4th Floor, Twin Atria Building, 4999-98 Avenue, Edmonton, Alberta, Canada, T6B 2X3, Telephone 780-422-1927, Fax 780-422-1459, web site www.ags.gov.ab.ca